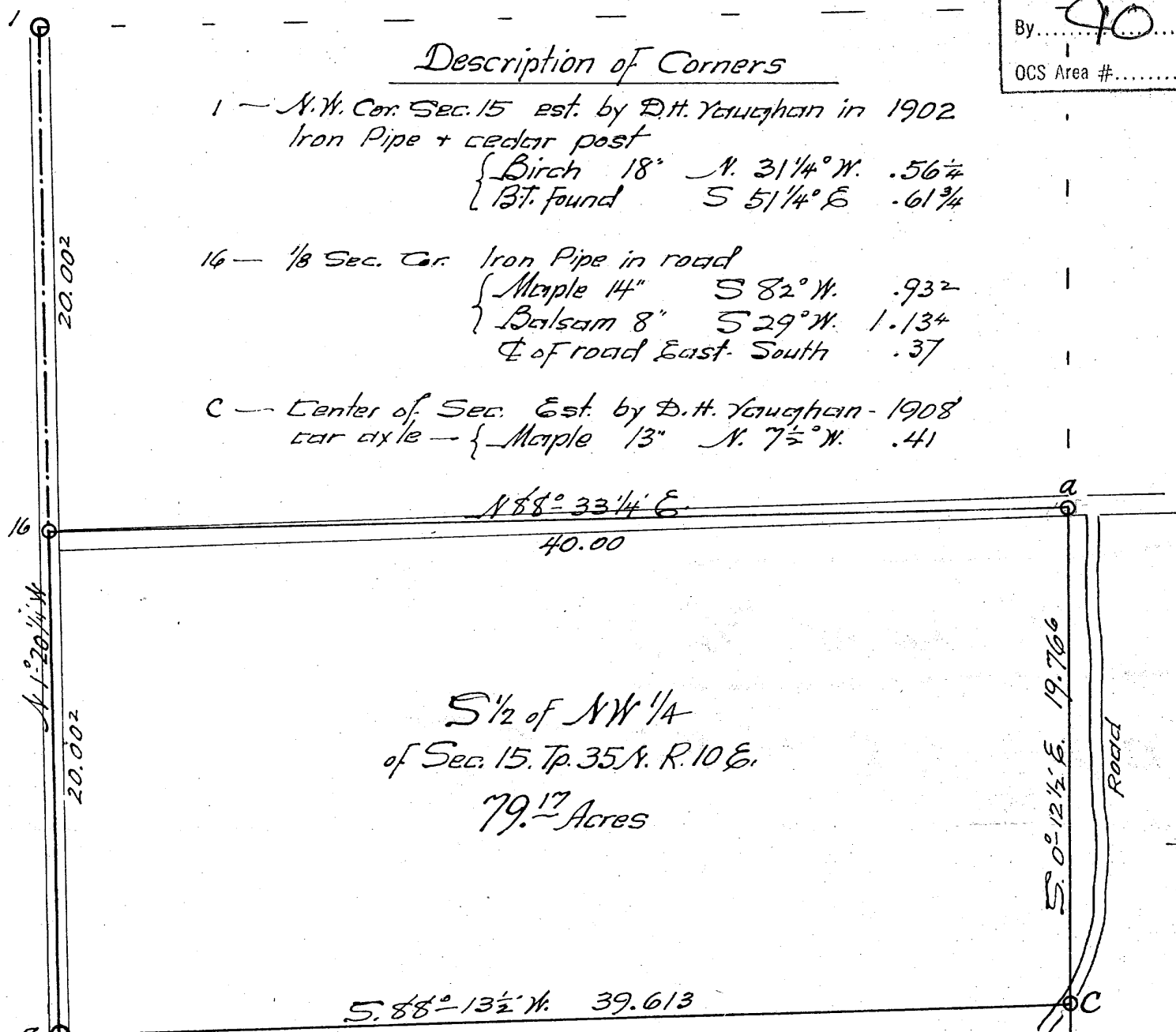


RECEIVED & FILED #.....
 Oneida County Surveyor's Office
 Date **MAY 13 1992**
 By **90**
 OCS Area #.....

Description of Corners

- 1 - N.W. Cor. Sec. 15 est. by D.H. Vaughan in 1902
 Iron Pipe + cedar post
 { Birch 18" N. 31 1/4° W. .56 7/8
 { Bt. found S 51 1/4° E .61 3/4
- 16 - 1/8 Sec. Cor. Iron Pipe in road
 { Maple 14" S 82° W. .932
 { Balsam 8" S 29° W. 1.134
 { Center of road East-South .37
- C - Center of Sec. Est. by D.H. Vaughan - 1908
 car axle - { Maple 13" N. 7 1/2° W. .41



- 8 - Orig. 1/4 Sec. cor. Iron Pipe in E road
 { D.H.V. Bt. stp. N 72 3/4° E. .356
 { " " " S 89 3/4° W .422
 { Iron Pipe on line N 88° 14' E. .374
- a - 1/8 S. cor. Iron Pipe in E grading
 { Sugar 15" S 73 1/2° E. 1.77
 { Elm 7" S 5 3/4° E .715
 { Road S. brs. E. .90

I, Harry C. Hall do hereby certify that on Aug. 5th and 6th 1932, I surveyed S 1/2 NW 1/4 Sec. 15-35-10 E. Wis. in accordance with County Surveyor Vaughan's surveys of 1902 + 1908, identifying Orig. West 1/4 S. + D.H.V.'s Center and N.W. cor. (Vaughan gives 40.38 1/2 as length of 1/4 NW 1/4
 " " 39.70 " " " E ")
 " " 39.62 " " " E ")

Scale
 1" = 6 chains
 Mean Mag.
 Var.
 1° 57' E.

Rhineland, Wis.
 August 16 1932

Harry C. Hall
 County Surveyor
 Oneida County