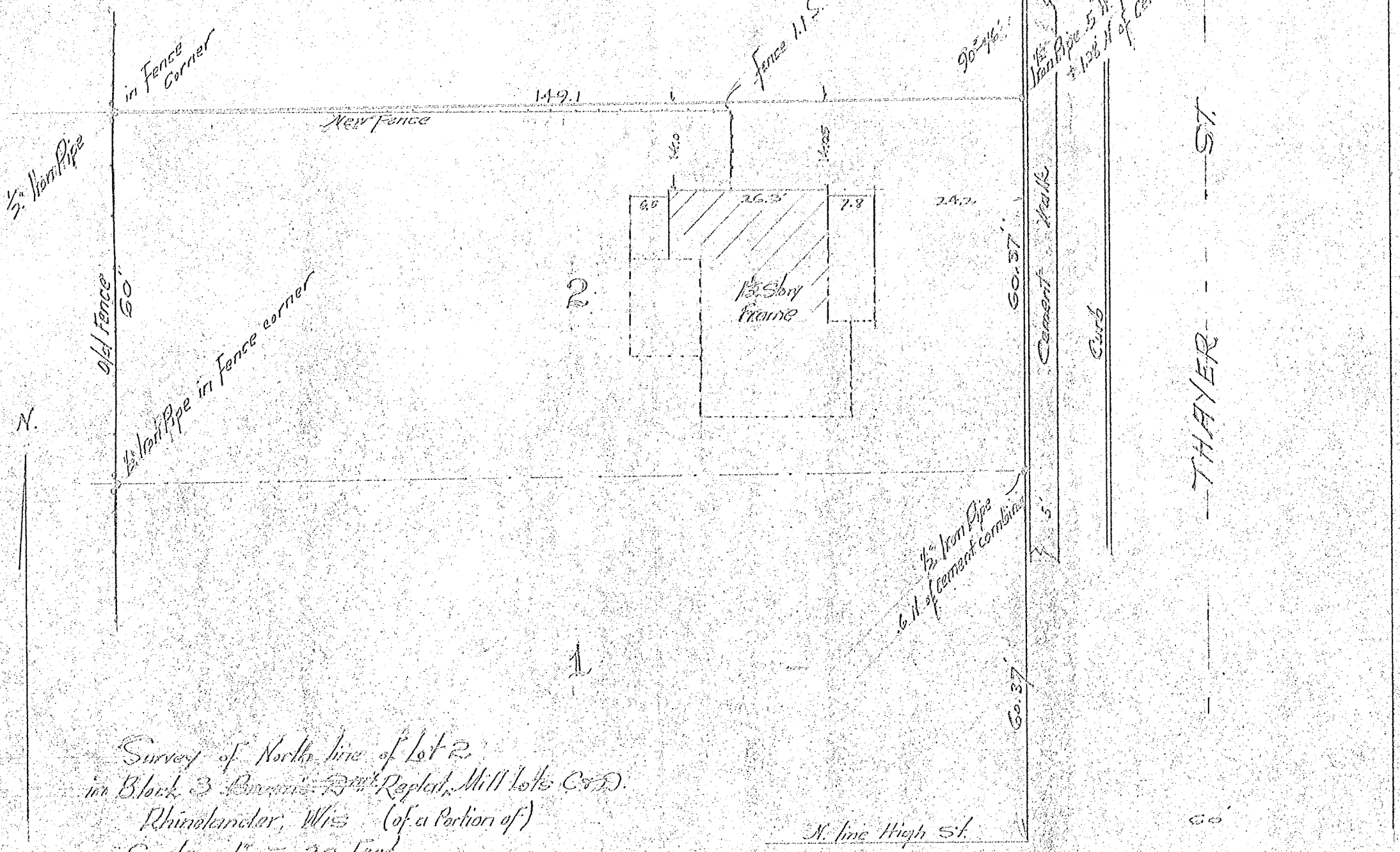


*R 307103
for H. H. Krause



Survey of North line of Lot 2
 in Block 3 Bounded by Replat. Mill Lots C & D.
 Rhineland, Wis (of a Portion of)
 Scale 1" = 20 feet

Harry C. Hall
 County Surveyor
 July 30th 1930

Misc. # 1137

Original in back
 of the "C" map
 cabinet.

RECEIVED & FILED #.....
 Oneida County Surveyor's Office
 Date: MAY 13 1992
 BY: JCO
 OCS Area #.....