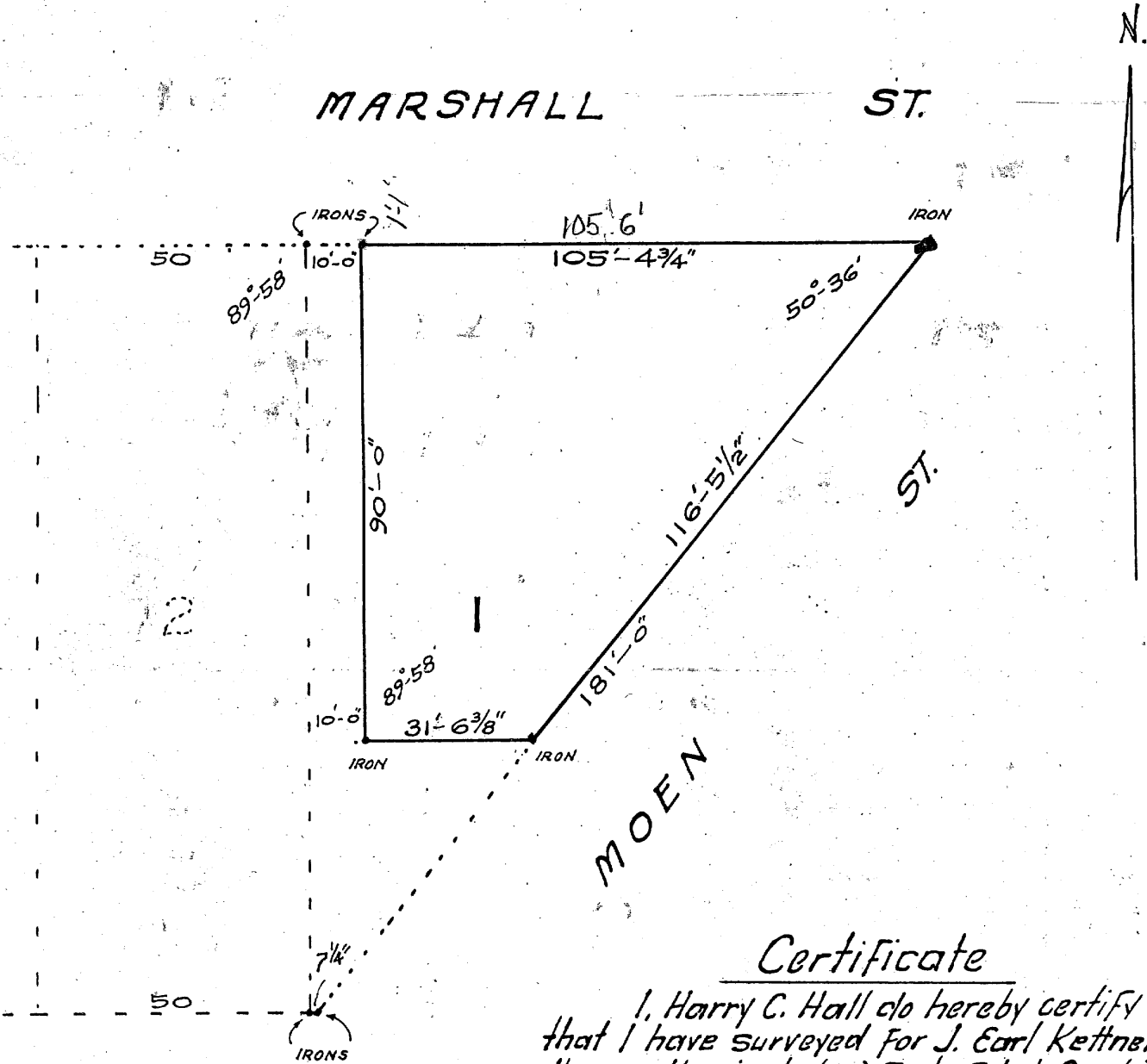


RECEIVED & FILED #.....
 Oneida County Surveyor's Office
 Date... **MAY 13 1992**
 By... **90**
 OCS Area #.....

R 30372

Plat of Survey

of
 A part of Lot 1 in Block 3 of S. D. Sutliff's Addn to Rhinelander, Wis.
 Scale 1" = 30 Ft.



Certificate

I, Harry C. Hall do hereby certify that I have surveyed for J. Earl Kettner the north ninety (90) Feet of Lot One (1) in Block Three (3) of S. D. Sutliff's Addn to Rhinelander, Wis, excepting the west Ten (10) feet thereof, and that the plat hereon drawn correctly represents said survey.

Harry C. Hall
 County Surveyor
 Oneida County

RHINELANDER, WIS.
 OFFICE OF COUNTY SURVEYOR
 ONEIDA COUNTY

Placed on file this 14th day of
April A. D. 1930
Harry C. Hall
 County Surveyor.

Rhinelander, Wis.
 April 5th 1930

160.12
 181.0
 116.5 1/2
 64.6 1/2

Misc #1166