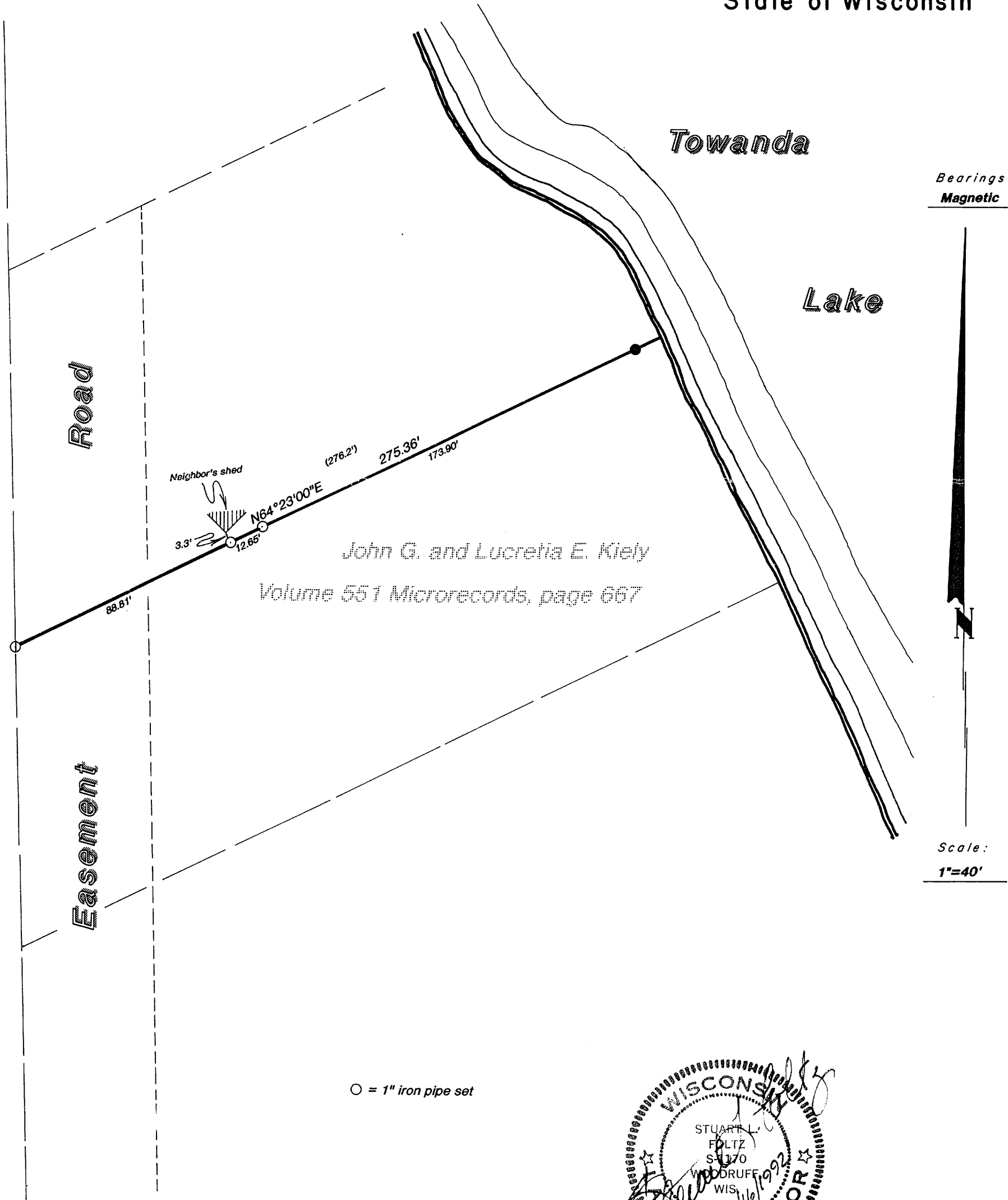


RECEIVED & FILED #.....  
 Oneida County Surveyor's Office  
**JUL. 17 1992**  
 Date.....  
 By.....  
 OCS Area #.....

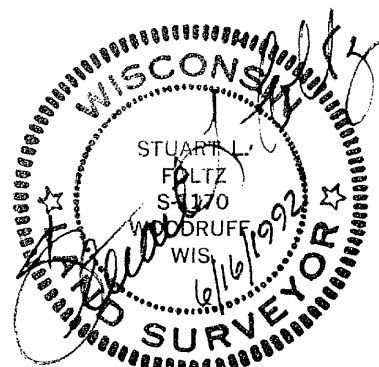
Inman • Foltz and Associates, Inc.  
 architects engineers surveyors  
 8612 highway 51 north  
 Minocqua, Wisconsin 54548 (715) 356-9485

Gov't. Lot 6  
 Section 23  
 Township 40 North  
 Range 6 East  
 County Oneida  
 State of Wisconsin



John G. and Lucretia E. Kiely  
 Volume 551 Microrecords, page 667

○ = 1" iron pipe set



I hereby certify that this survey and the above map were made in accordance with acceptable professional standards and that the information contained thereon is, to the best of my knowledge, information and belief, a true and accurate representation thereof.  
 Any legal descriptions conforming to this survey have been provided on separate sheets.  
 The above survey was made by order of John Kiely.