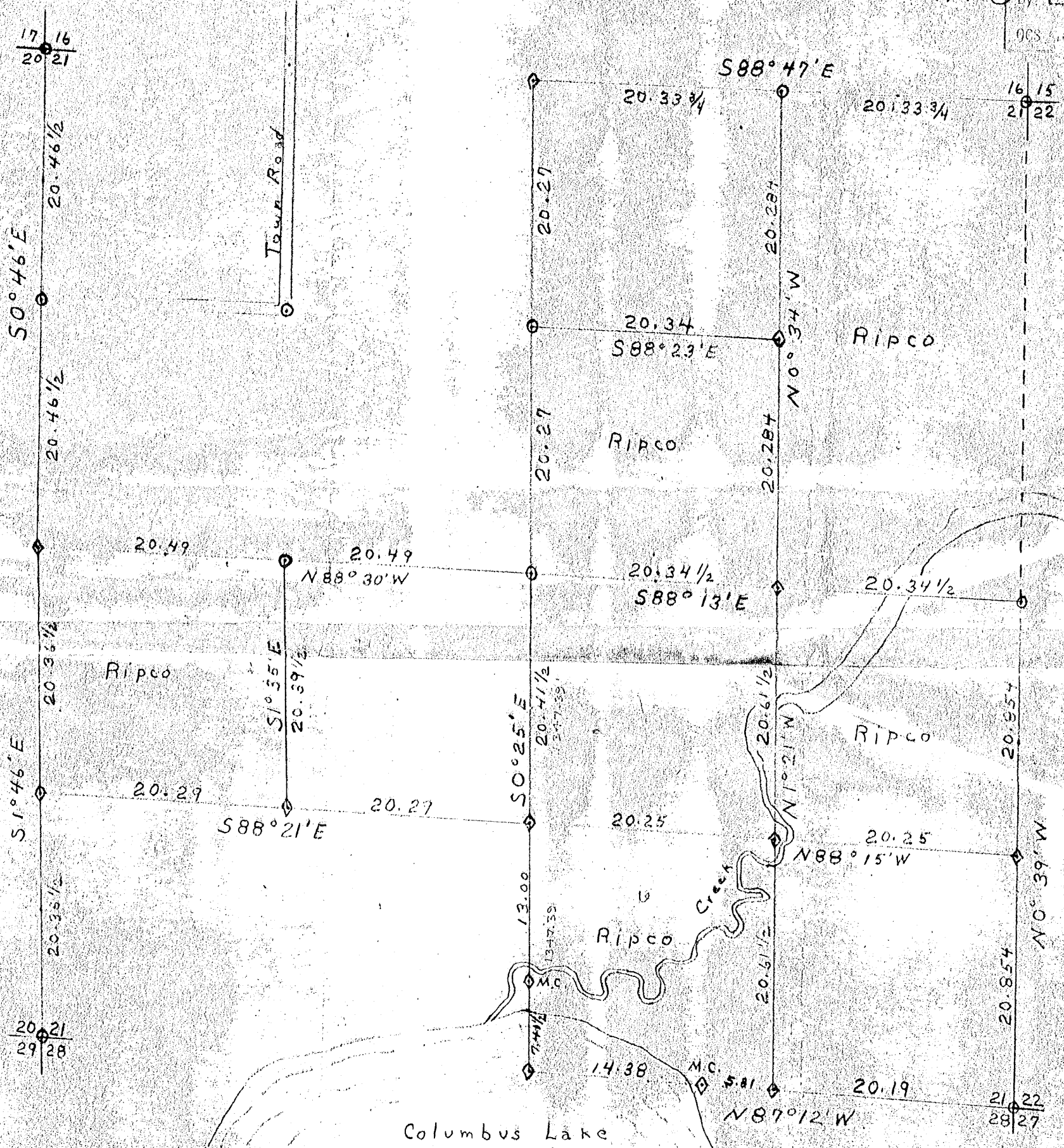


# SURVEY Sec. 21 T. 39 N. R. 10 E

RECEIVED & FILED #.....  
 Oneida County Surveyor's Office  
 Date **SEP. 21 1992**  
 By **E90**  
 GCS #.....



Key to corners & lines  
 ⊙ Old corners Dorr, Vaughn etc.  
 ◊ Ripco set corners  
 — Lines run by transit  
 - - - Lines by scale

1-10-59  
X.J.L.

21 39-10

21 39-10