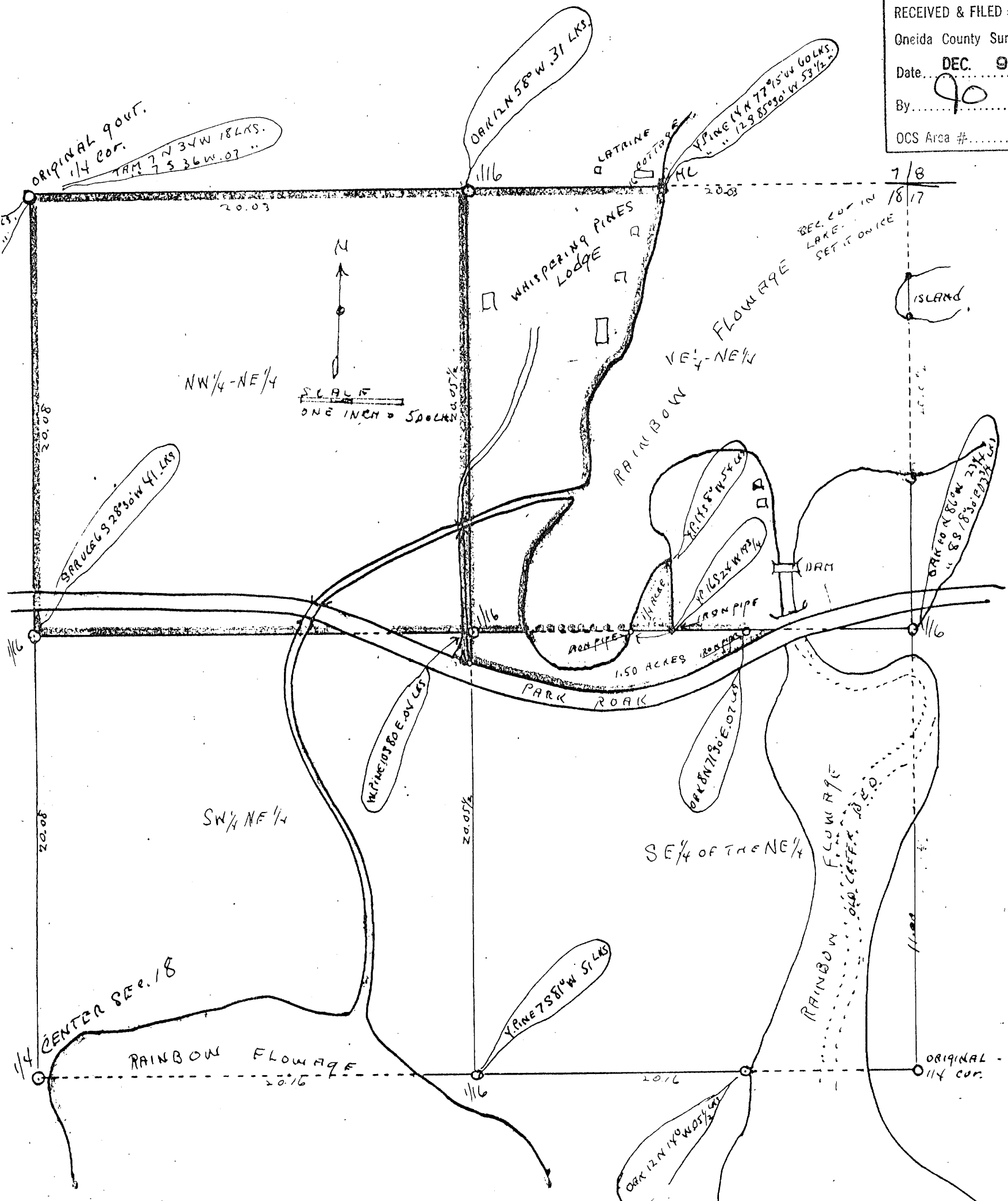


RECEIVED & FILED #.....  
 Oneida County Surveyor's Office  
 Date **DEC. 9 1992**  
 By *go*  
 OCS Area #.....



LANDS SHOWN ON THE MAP SHADED IN RED BELONG TO WHISPERING PINES LODGE PROPERTY - AND IT IS A TRUE REPRESENTATION OF THE LAND SURVEYED AS A PART OF SECTION 18, T39N R8E, ONEIDA COUNTY, WISCONSIN - BY

*49-47*  
 C. J. Lytle, County Surveyor  
 of Oneida County, Wis.