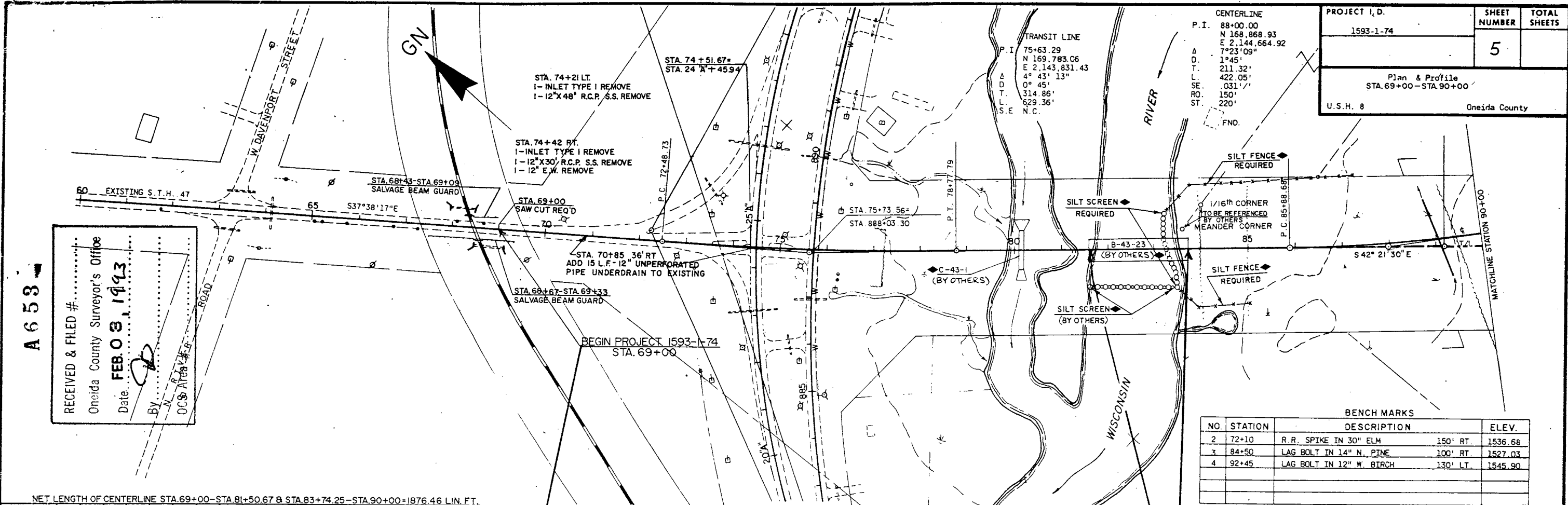


Tim Oestreich

RECEIVED & FILED #.....
 Oneida County Surveyor's Office
 Date **FEB. 03, 1993**
 BY *[Signature]*
 N. R. [Signature]
 OCS/ [Signature]

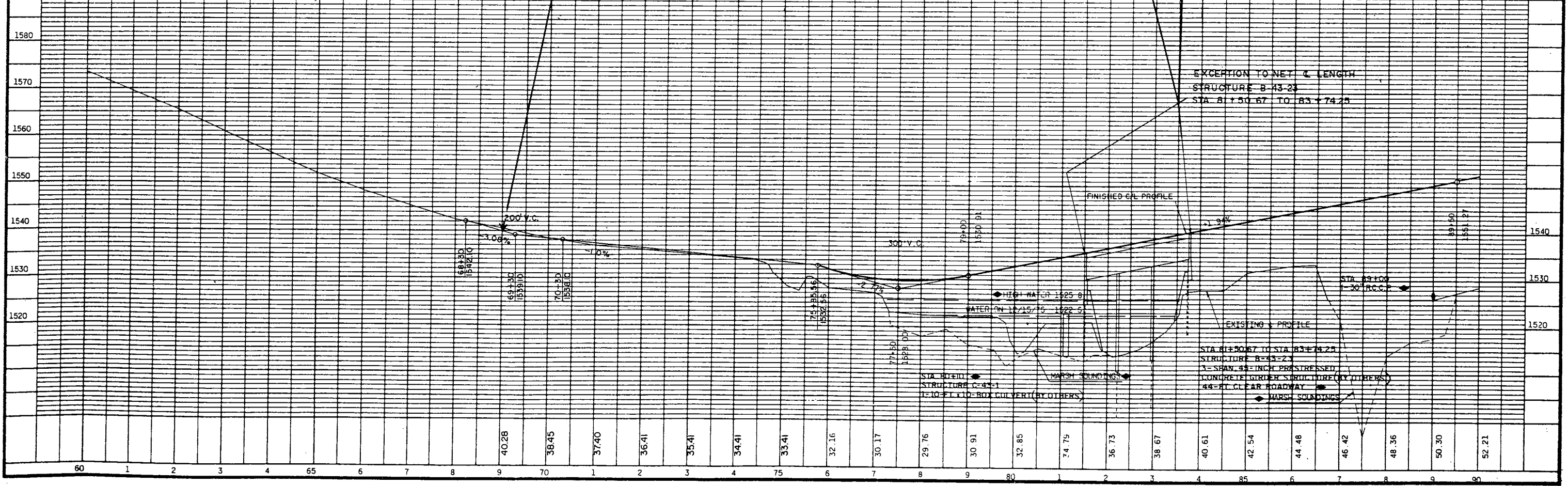
PROJECT I. D. 1593-1-74	SHEET NUMBER 5	TOTAL SHEETS
Plan & Profile STA. 69+00 - STA. 90+00		
U.S.H. 8 Oneida County		



BENCH MARKS

NO.	STATION	DESCRIPTION	ELEV.
2	72+10	R.R. SPIKE IN 30" ELM	150' RT. 1536.68
3	84+50	LAG BOLT IN 14" N. PINE	100' RT. 1527.03
4	92+45	LAG BOLT IN 12" W. BIRCH	130' LT. 1545.90

NET LENGTH OF CENTERLINE STA. 69+00 - STA. 81+50.67 & STA. 83+74.25 - STA. 90+00 = 1876.46 LIN. FT.

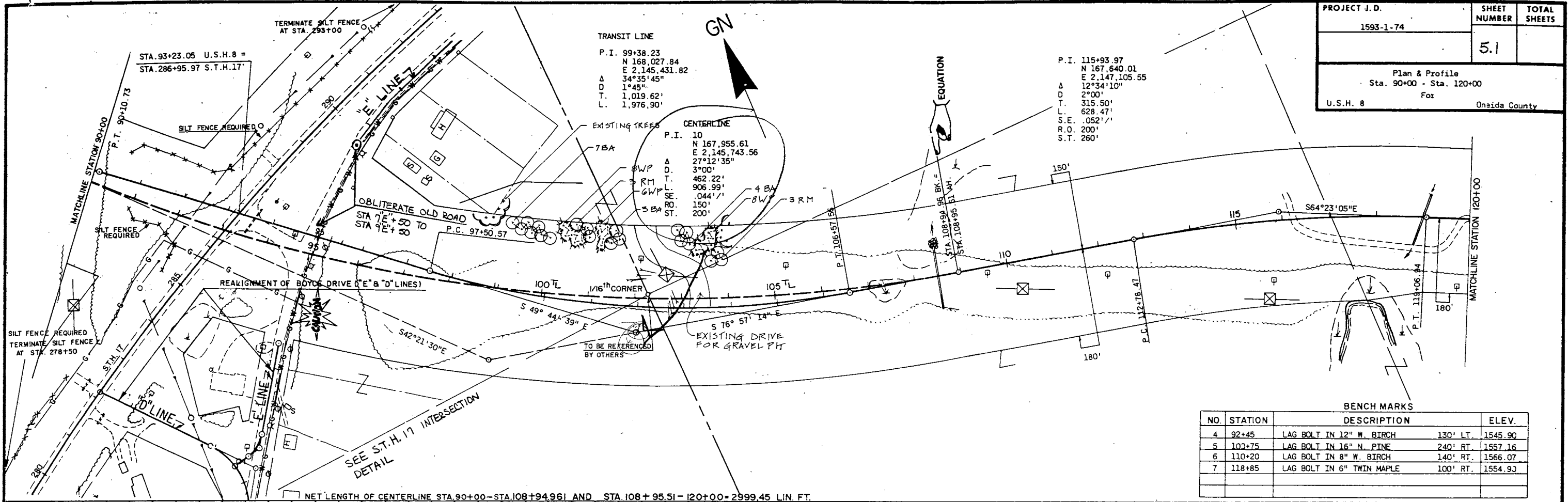


A 653

A 653

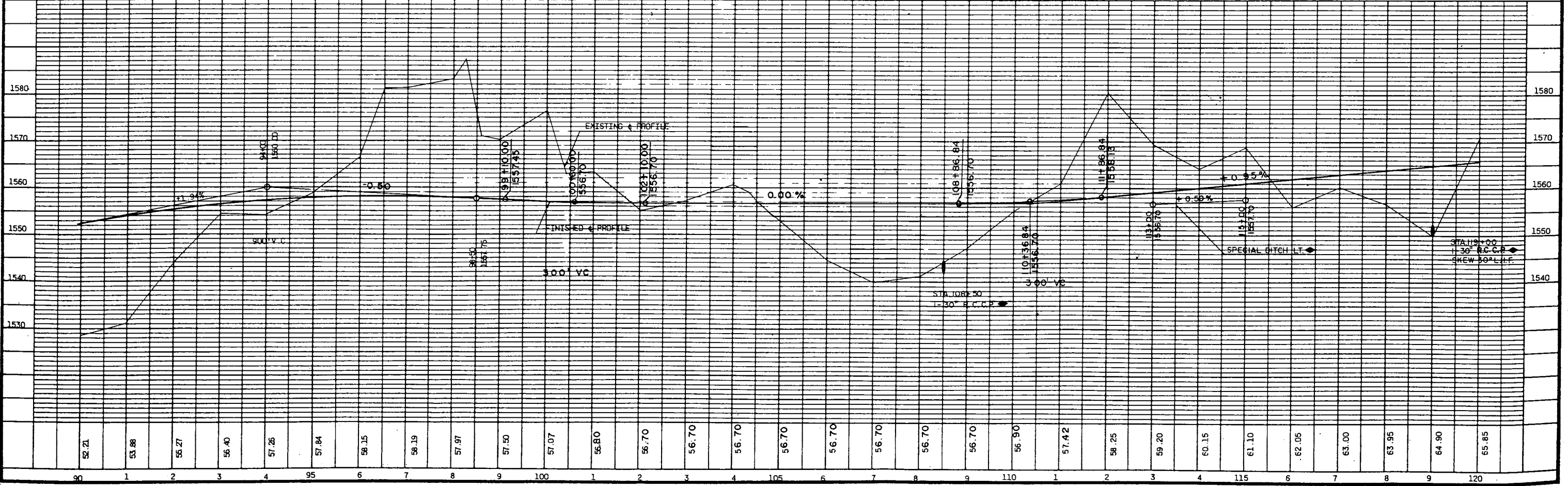
A 653

PROJECT J.D.	SHEET NUMBER	TOTAL SHEETS
1593-1-74	5.1	
Plan & Profile Sta. 90+00 - Sta. 120+00		
U.S.H. 8 Fox Onside County		



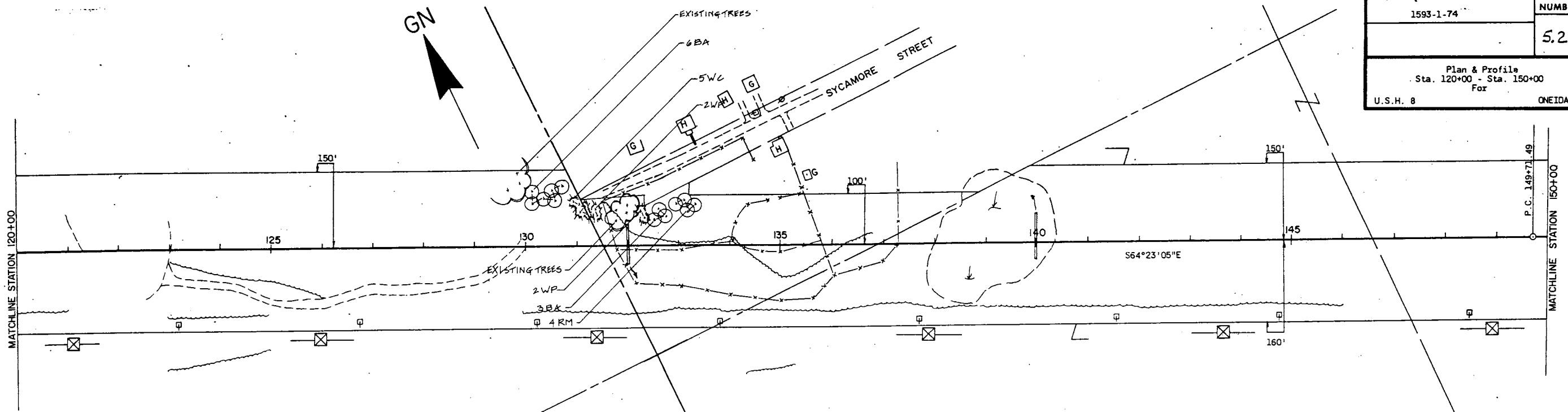
BENCH MARKS

NO	STATION	DESCRIPTION	ELEV.
4	92+45	LAG BOLT IN 12" W. BIRCH 130' LT.	1545.90
5	102+75	LAG BOLT IN 16" N. PINE 240' RT.	1557.16
6	110+20	LAG BOLT IN 8" W. BIRCH 140' RT.	1566.07
7	118+85	LAG BOLT IN 6" TWIN MAPLE 100' RT.	1554.93



A 653

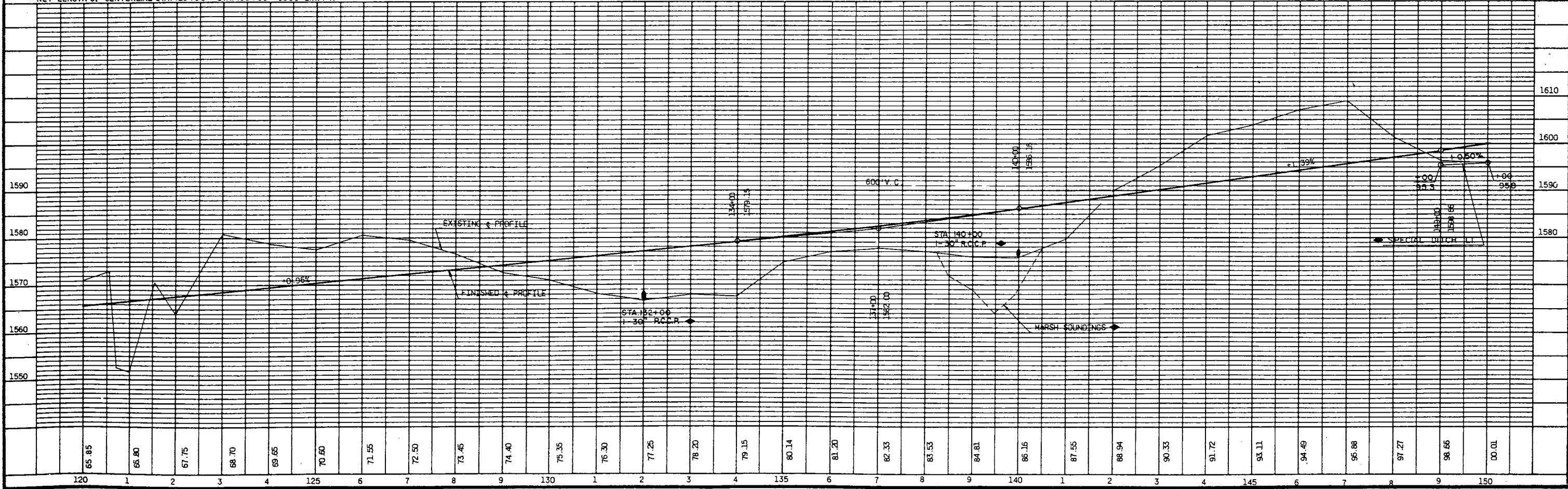
PROJECT, I. D. 1593-1-74	SHEET NUMBER 5.2	TOTAL SHEETS
Plan & Profile Sta. 120+00 - Sta. 150+00 For		
U.S.H. 8		ONEIDA COUNTY



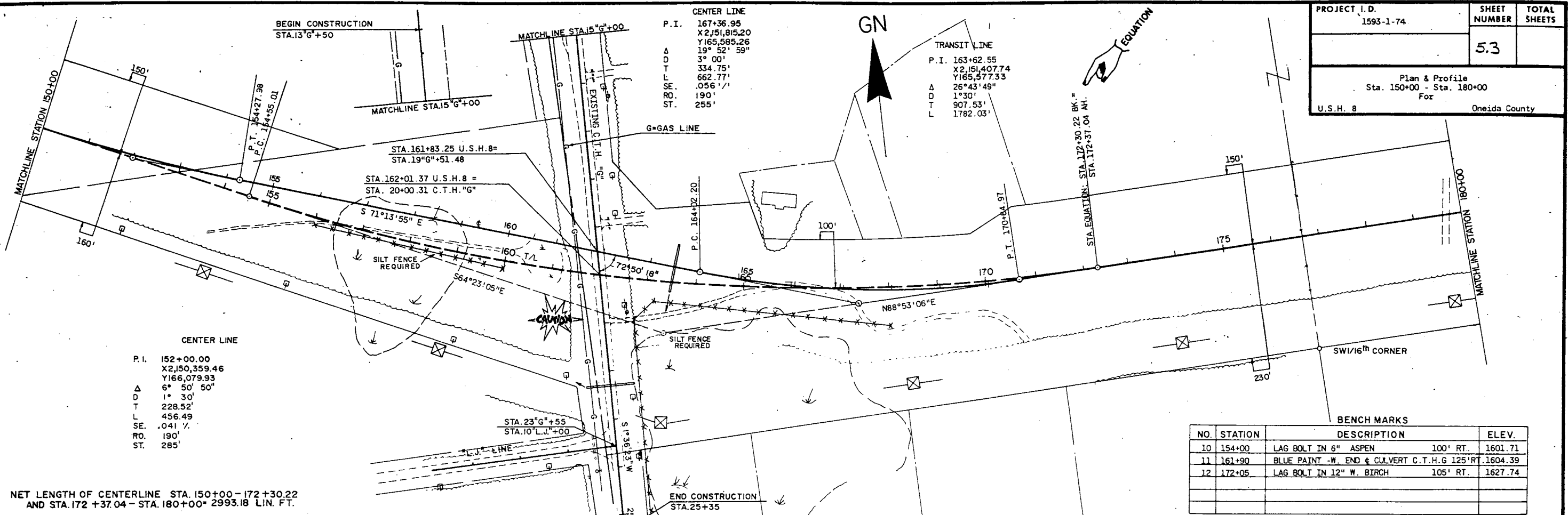
BENCH MARKS

NO.	STATION	DESCRIPTION	ELEV.
8	130+10	LAG BOLT IN POWER POLE 185' RT.	1574.64
9	142+50	LAG BOLT IN 12" W. BIRCH 125' RT.	1588.24

NET LENGTH OF CENTERLINE STA. 120+00 - STA. 150+00 = 3000 LIN. FT.

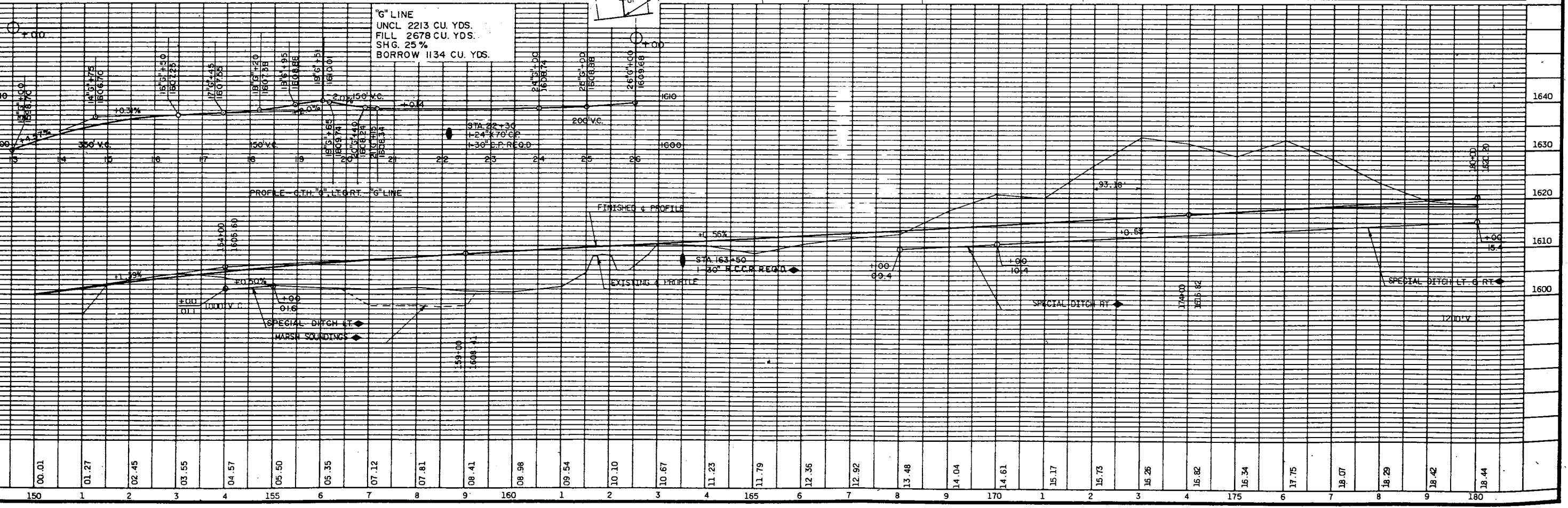


PROJECT I.D. 1593-1-74	SHEET NUMBER 5.3	TOTAL SHEETS
Plan & Profile Sta. 150+00 - Sta. 180+00 For U.S.H. 8 Oneida County		



BENCH MARKS

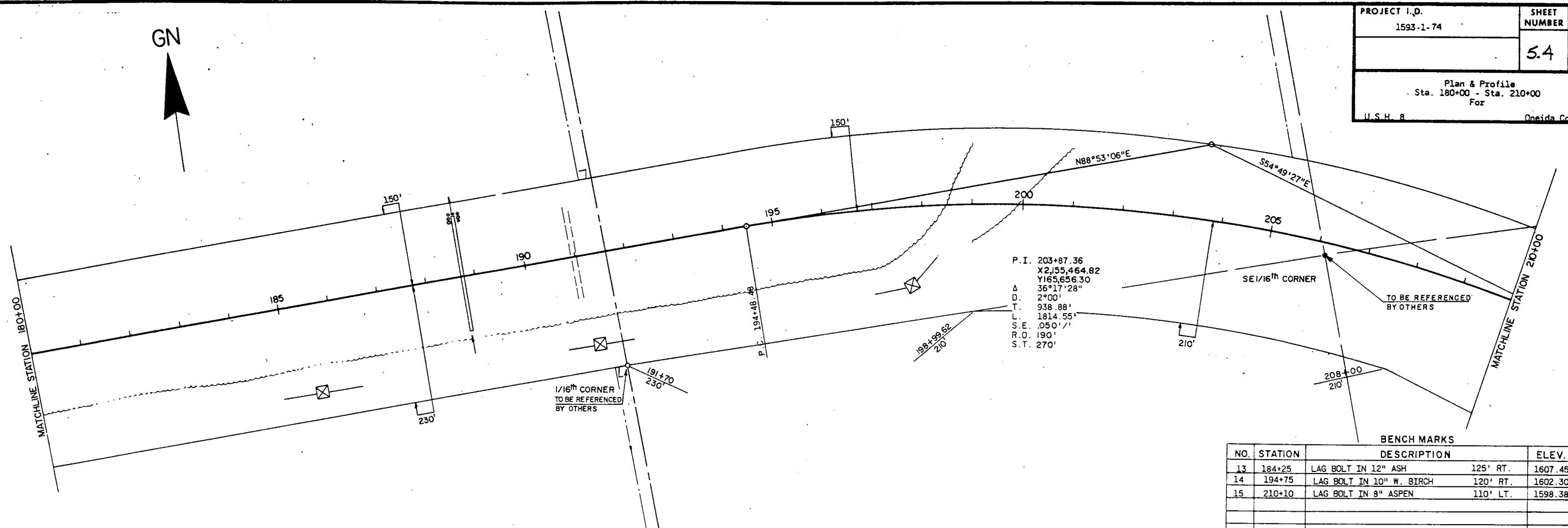
NO.	STATION	DESCRIPTION	ELEV.
10	154+00	LAG BOLT IN 6" ASPEN 100' RT.	1601.71
11	161+90	BLUE PAINT - W. END & CULVERT C.T.H.G 125' RT.	1604.39
12	172+05	LAG BOLT IN 12" W. BIRCH 105' RT.	1627.74



A653

A653

PROJECT I.D. 1593-1-74	SHEET NUMBER 5.4	TOTAL SHEETS
Plan & Profile Sta. 180+00 - Sta. 210+00 For U.S.H. 8 Oneida County		

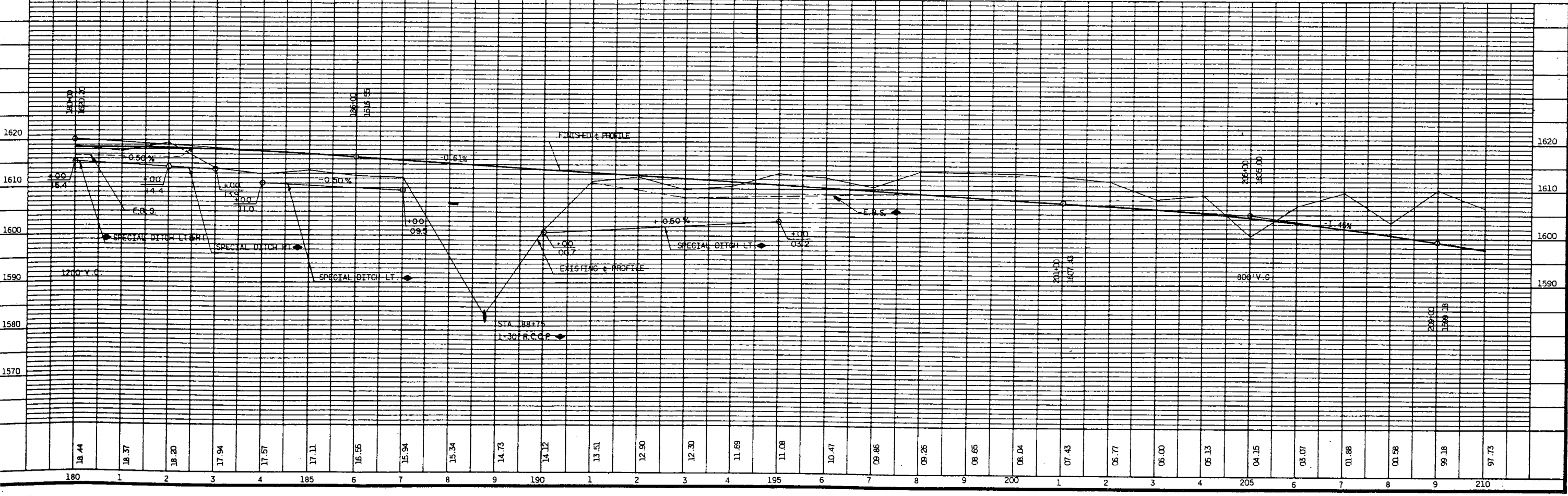


P.I. 203+87.36
 X2,55,464.82
 Y165,656.30
 Δ 36°17'28"
 D. 2°00'
 T. 938.88'
 L. 1814.55'
 S.E. .050' /'
 R.O. 190'
 S.T. 270'

BENCH MARKS

NO.	STATION	DESCRIPTION	ELEV.
13	184+25	LAG BOLT IN 12" ASH	125' RT. 1607.45
14	194+75	LAG BOLT IN 10" W. BIRCH	120' RT. 1602.30
15	210+10	LAG BOLT IN 8" ASPEN	110' LT. 1598.38

NET LENGTH OF CENTERLINE STA. 180+00-210+00=3000 LIN. FT.

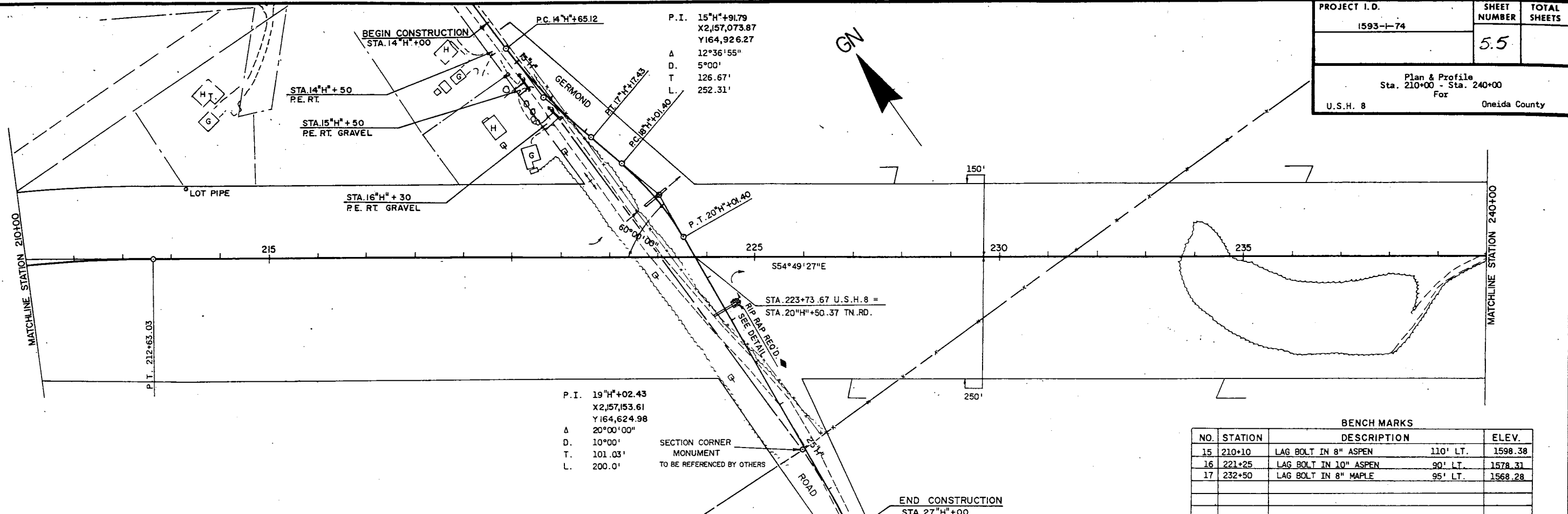


A653

A653

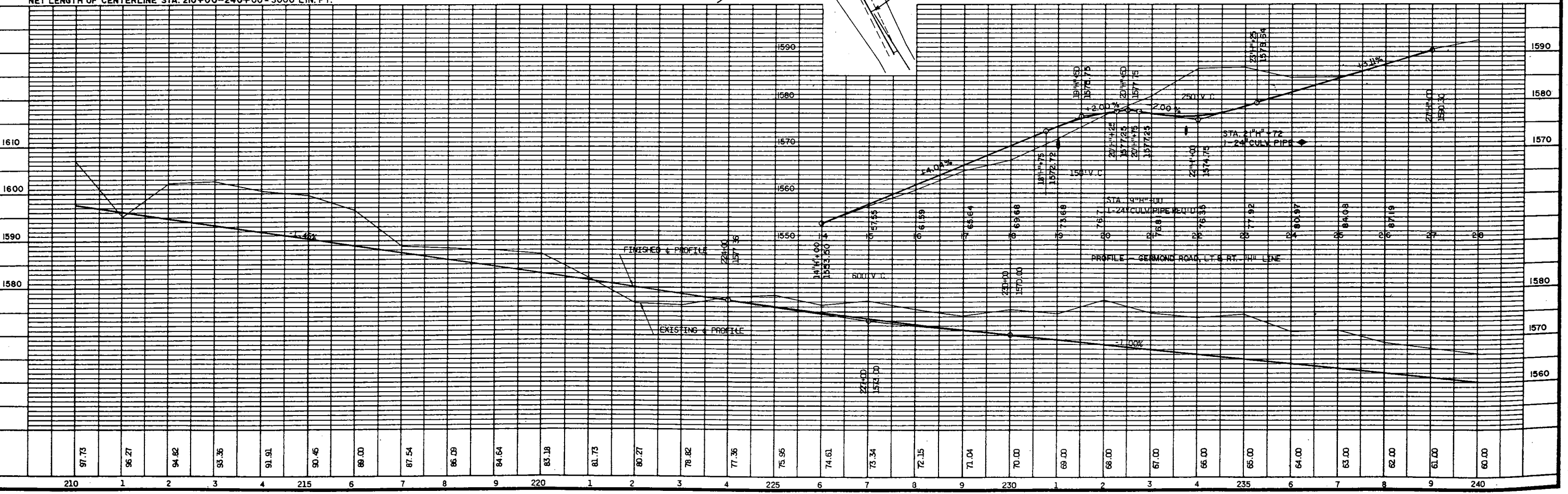
PROJECT I.D. 1593-1-74	SHEET NUMBER 5.5	TOTAL SHEETS
Plan & Profile Sta. 210+00 - Sta. 240+00 For U.S.H. 8 Oneida County		

A653



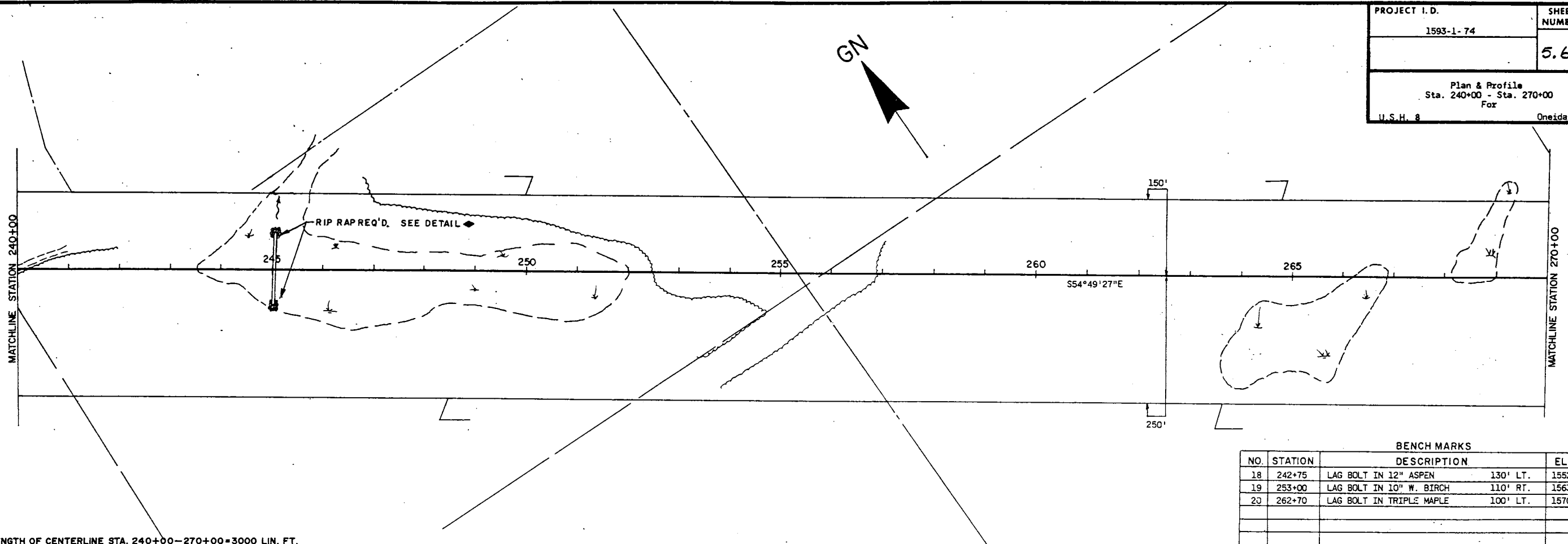
BENCH MARKS			
NO.	STATION	DESCRIPTION	ELEV.
15	210+10	LAG BOLT IN 8" ASPEN 110' LT.	1598.38
16	221+25	LAG BOLT IN 10" ASPEN 90' LT.	1578.31
17	232+50	LAG BOLT IN 8" MAPLE 95' LT.	1568.28

NET LENGTH OF CENTERLINE STA. 210+00-240+00=3000 LIN. FT.



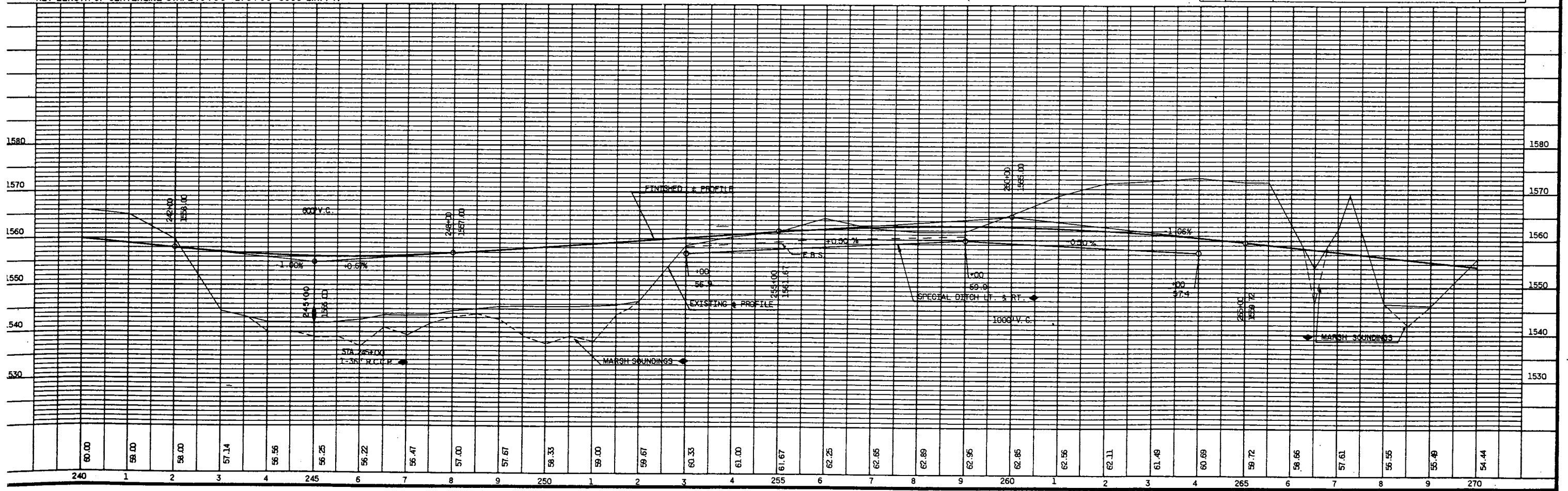
653

PROJECT I.D. 1593-1-74	SHEET NUMBER 5.6	TOTAL SHEETS
Plan & Profile Sta. 240+00 - Sta. 270+00 Fox U.S.H. 8 Oneida County		



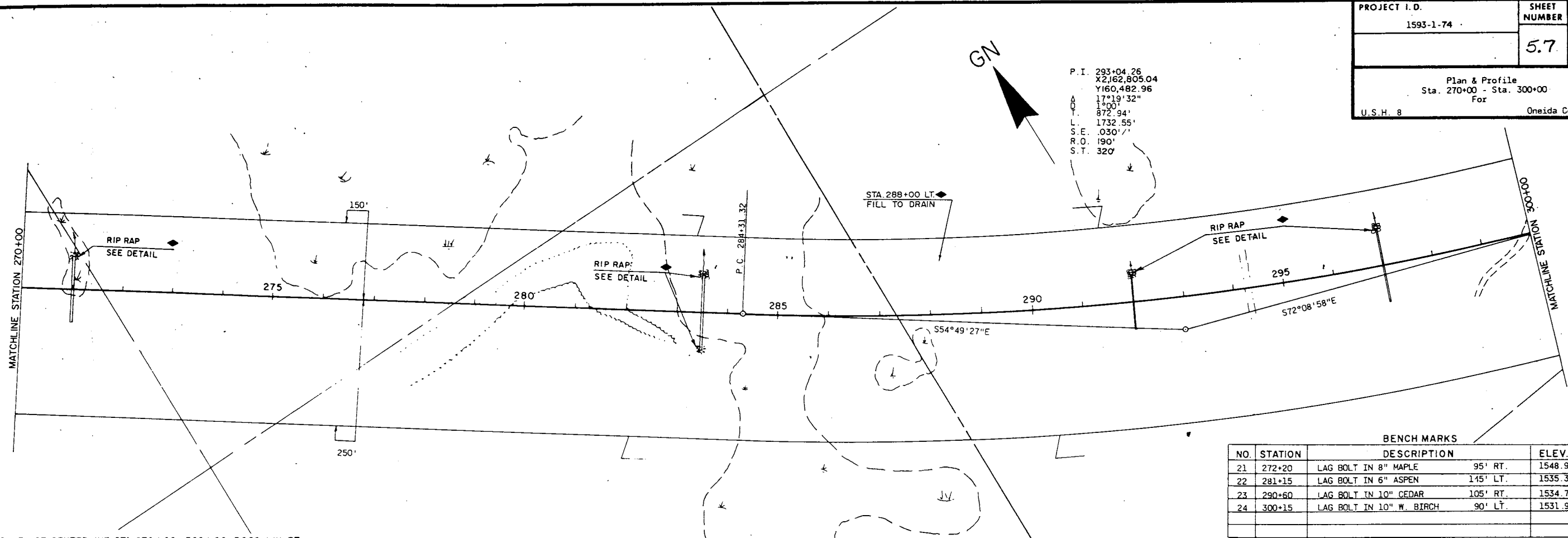
BENCH MARKS			
NO.	STATION	DESCRIPTION	ELEV.
18	242+75	LAG BOLT IN 12" ASPEN 130' LT.	1552.18
19	253+00	LAG BOLT IN 10" W. BIRCH 110' RT.	1563.67
20	262+70	LAG BOLT IN TRIPLE MAPLE 100' LT.	1570.26

NET LENGTH OF CENTERLINE STA. 240+00-270+00=3000 LIN. FT.



PROJECT I.D. 1593-1-74	SHEET NUMBER 5.7	TOTAL SHEETS
Plan & Profile Sta. 270+00 - Sta. 300+00 For Oneida County		
U.S.H. 8		

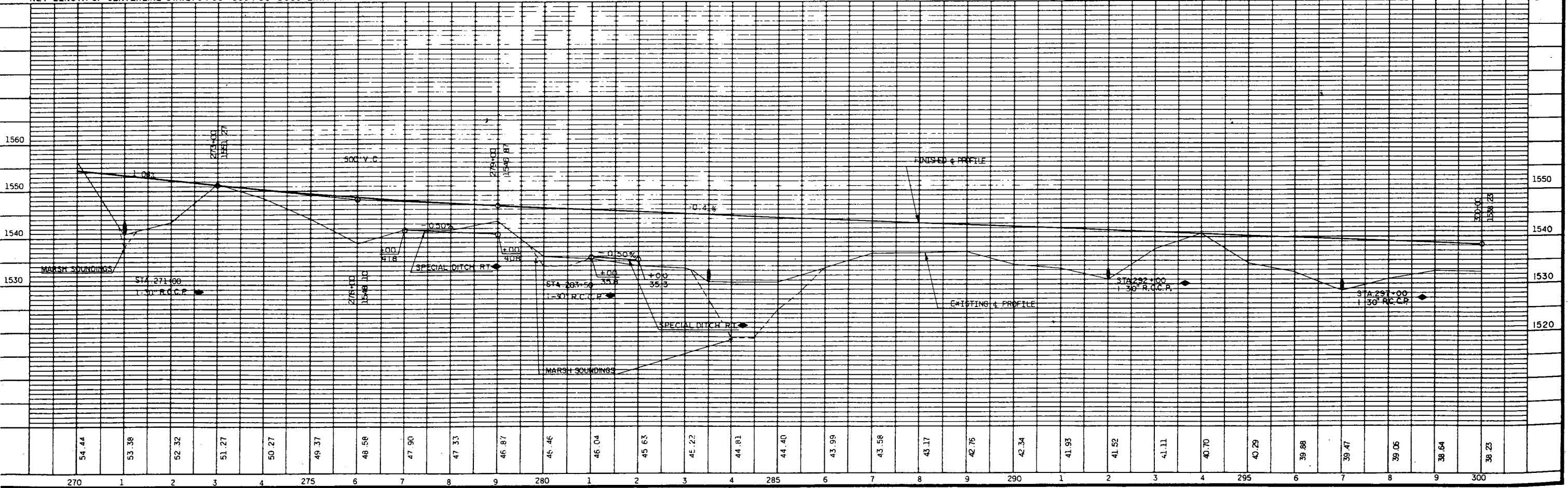
P.I. 283+04.26
X2,162,805.04
Y160,482.96
17°19'32"
A.D.T. 1500'
872.94'
L. 1732.55'
S.E. .030'/'
R.O. 190'
S.T. 320'



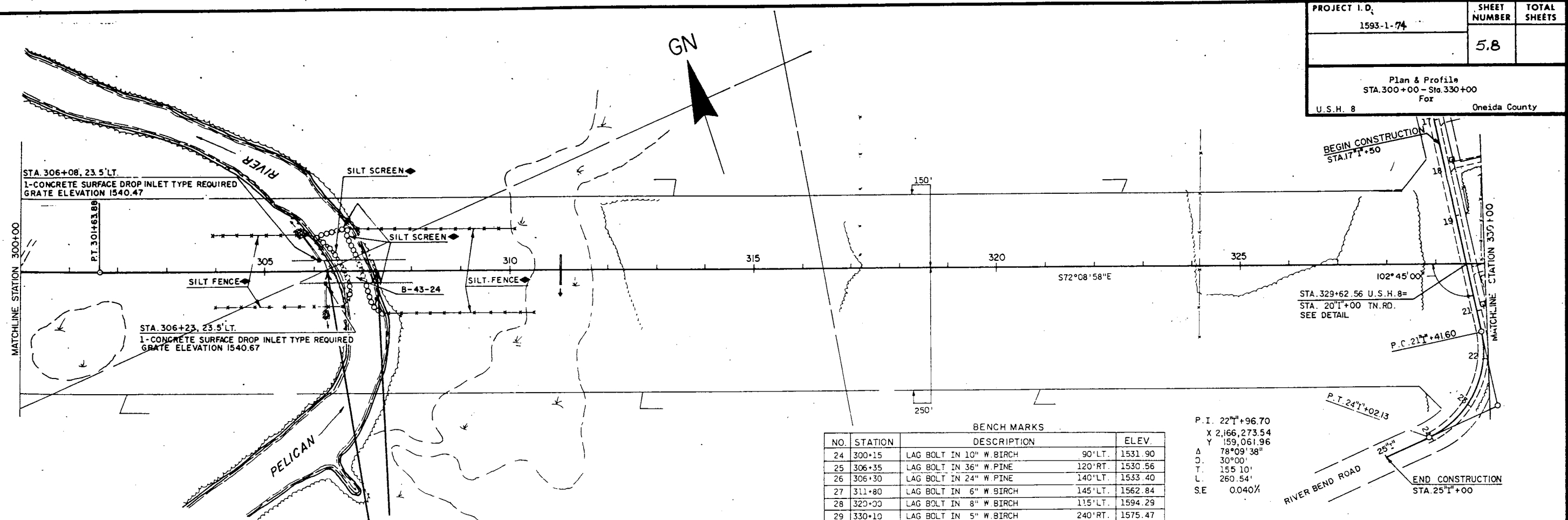
BENCH MARKS

NO.	STATION	DESCRIPTION	ELEV.
21	272+20	LAG BOLT IN 8" MAPLE 95' RT.	1548.94
22	281+15	LAG BOLT IN 6" ASPEN 145' LT.	1535.39
23	290+60	LAG BOLT IN 10" CEDAR 105' RT.	1534.79
24	300+15	LAG BOLT IN 10" W. BIRCH 90' LT.	1531.90

NET LENGTH OF CENTERLINE STA. 270+00-300+00=3000 LIN. FT.



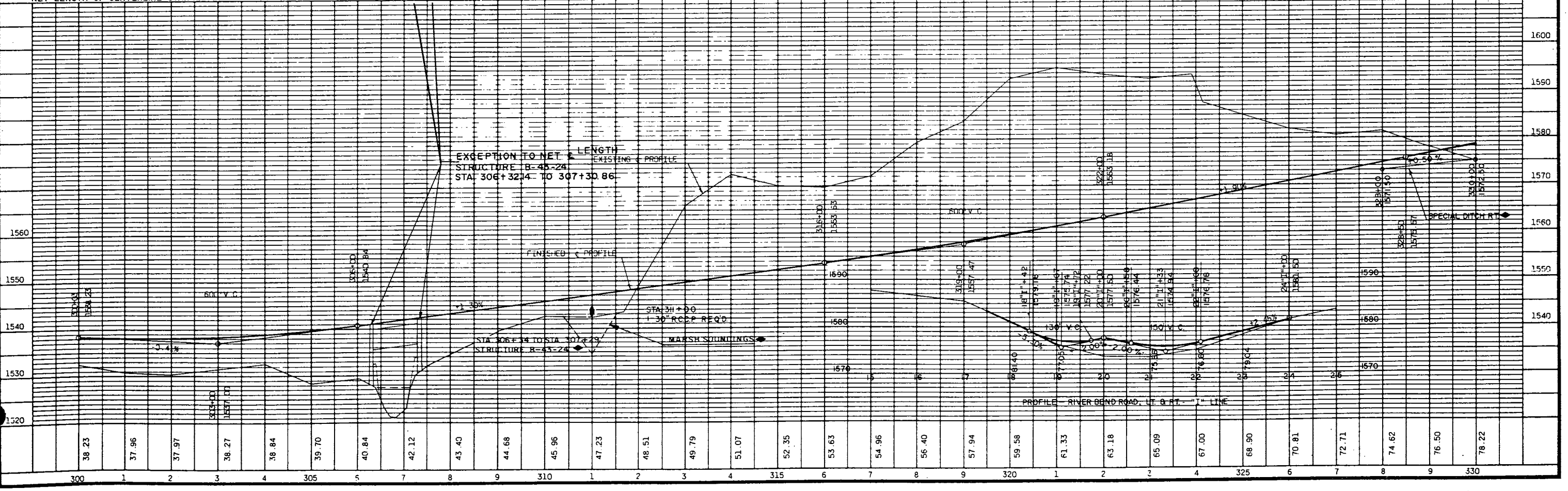
PROJECT I.D. 1593-1-74	SHEET NUMBER 5.8	TOTAL SHEETS
Plan & Profile STA. 300+00 - Sta. 330+00 For U.S.H. 8 Oneida County		



NO.	STATION	DESCRIPTION	ELEV.
24	300+15	LAG BOLT IN 10" W. BIRCH 90' LT.	1531.90
25	306+35	LAG BOLT IN 36" W. PINE 120' RT.	1530.56
26	306+30	LAG BOLT IN 24" W. PINE 140' LT.	1533.40
27	311+80	LAG BOLT IN 6" W. BIRCH 145' LT.	1562.84
28	320+00	LAG BOLT IN 8" W. BIRCH 115' LT.	1594.29
29	330+10	LAG BOLT IN 5" W. BIRCH 240' RT.	1575.47

P.I. 22°+96.70
 X 2,166,273.54
 Y 159,061.96
 Δ 78°09'38"
 D. 30°00'
 T. 155'10"
 L. 260.54'
 S.E. 0.040%

NET LENGTH OF CENTERLINE STA. 300+00 - STA. 306+32.14 AND STA. 307+30.86 - STA. 330+00 = 290.28 LIN. FT.



PROJECT I.D.	1593-1-74	SHEET NUMBER	5.9	TOTAL SHEETS	
--------------	-----------	--------------	-----	--------------	--

Plan & Profile
Sta. 330+00 - Sta. 360+00
For Oneida County



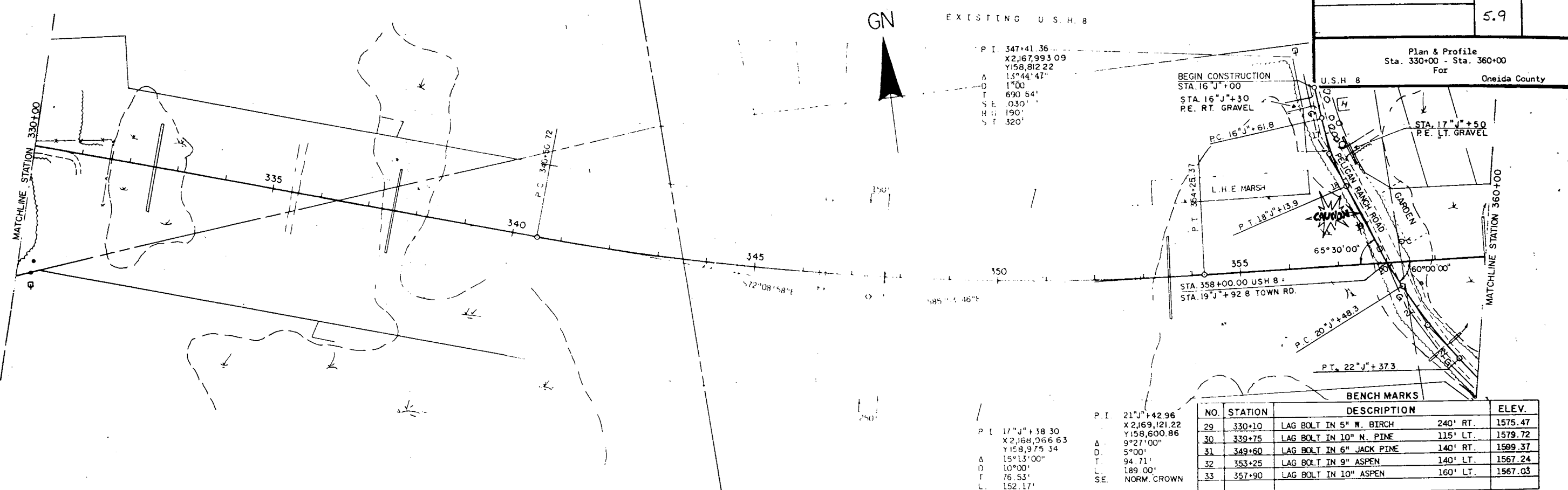
EXISTING U.S.H. 8

P.I. 347+41.36
X2,167,993.09
Y158,812.22
Δ 15°44'47"
D 1°00'
T 690.54'
S.E. 0.30'
R 190'
S.T. 320'

BEGIN CONSTRUCTION
STA. 16"J"+00
STA. 16"J"+30
P.E. RT. GRAVEL

U.S.H. 8

STA. 17"J"+50
P.E. LT. GRAVEL



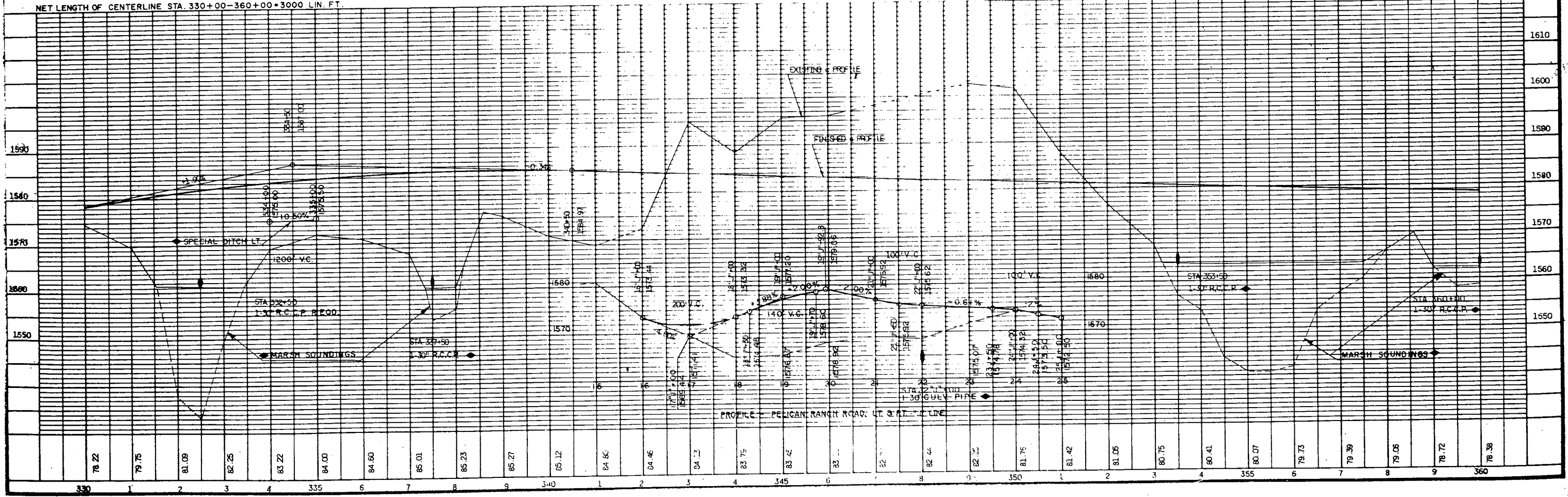
STA. 358+00.00 U.S.H. 8
STA. 19"J"+92.8 TOWN RD.

BENCH MARKS

NO.	STATION	DESCRIPTION	ELEV.
29	330+10	LAG BOLT IN 5" W. BIRCH	240' RT. 1575.47
30	339+75	LAG BOLT IN 10" N. PINE	115' LT. 1579.72
31	349+60	LAG BOLT IN 6" JACK PINE	140' RT. 1599.37
32	353+25	LAG BOLT IN 9" ASPEN	140' LT. 1567.24
33	357+90	LAG BOLT IN 10" ASPEN	160' LT. 1567.03

P.I. 17"J"+38.30
X2,169,121.22
Y158,600.86
Δ 9°27'00"
D 5°00'
T 94.71'
L 189.00'
S.E. NORM. CROWN

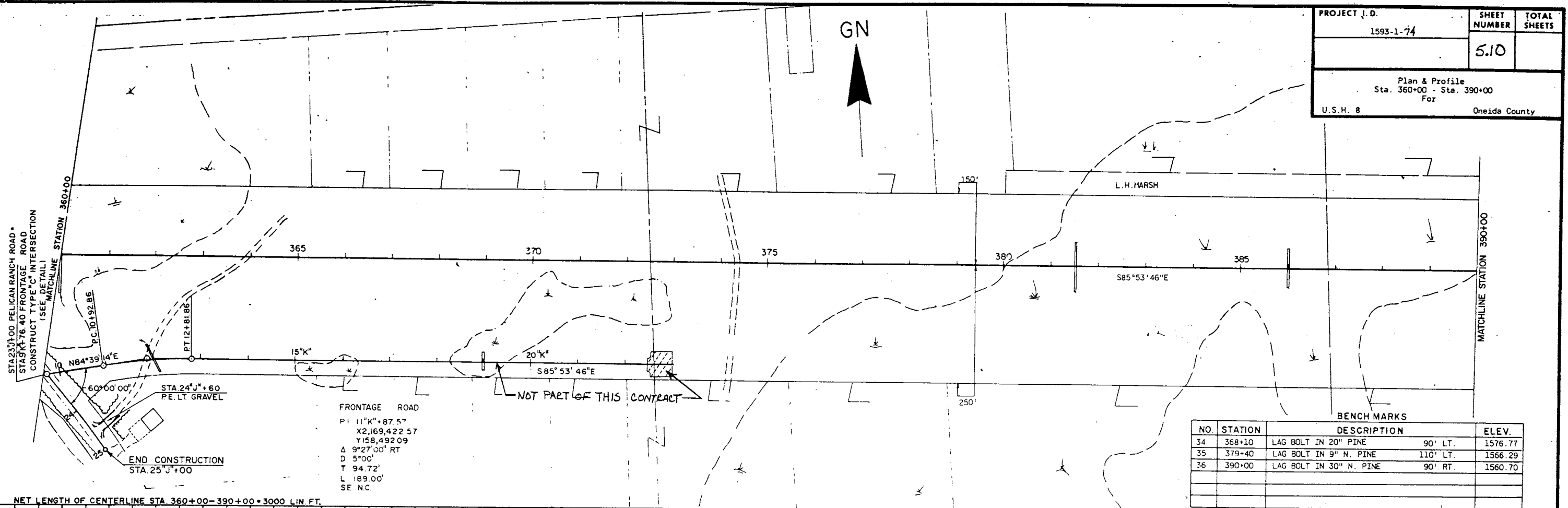
NET LENGTH OF CENTERLINE STA. 330+00-360+00=3000 LIN. FT.



A653

PROJECT I.D.	SHEET NUMBER	TOTAL SHEETS
1593-1-74	5.10	
Plan & Profile Sta. 360+00 - Sta. 390+00 For U.S.H. 8 Oneida County		

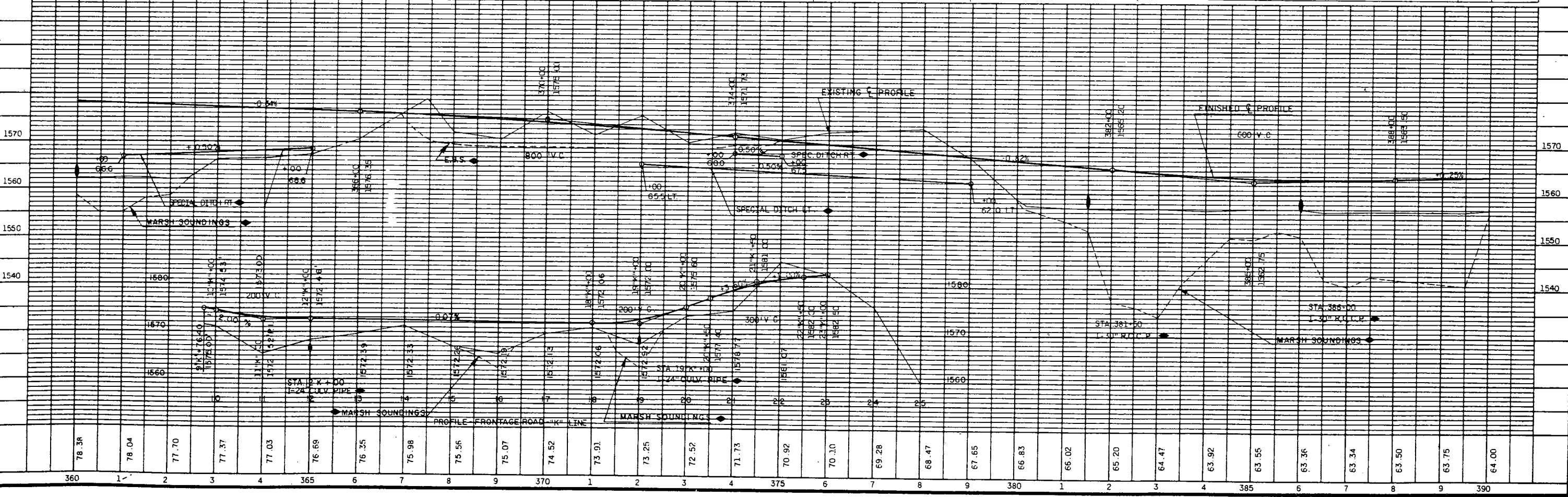
A653



BENCH MARKS

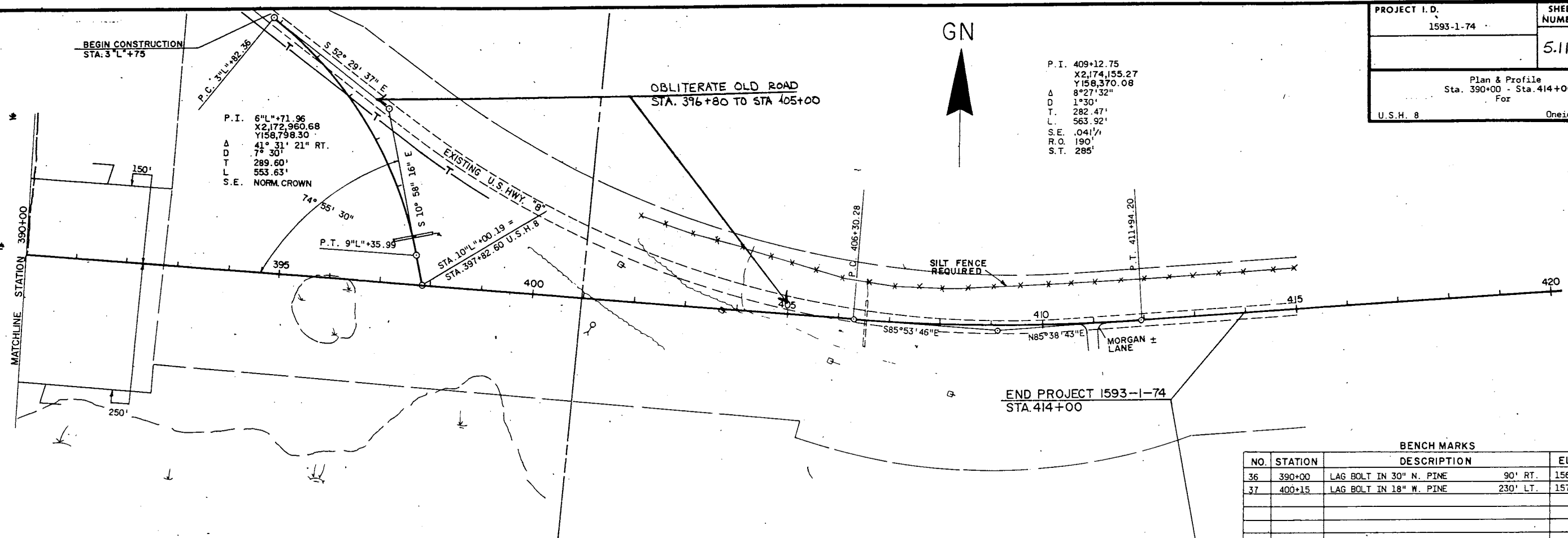
NO.	STATION	DESCRIPTION	ELEV.
34	368+10	LAG BOLT IN 20" PINE 90' LT.	1576.77
35	379+40	LAG BOLT IN 9" N. PINE 110' LT.	1566.29
36	390+00	LAG BOLT IN 30" N. PINE 90' RT.	1560.70

NET LENGTH OF CENTERLINE STA. 360+00-390+00=3000 LIN. FT.



A653

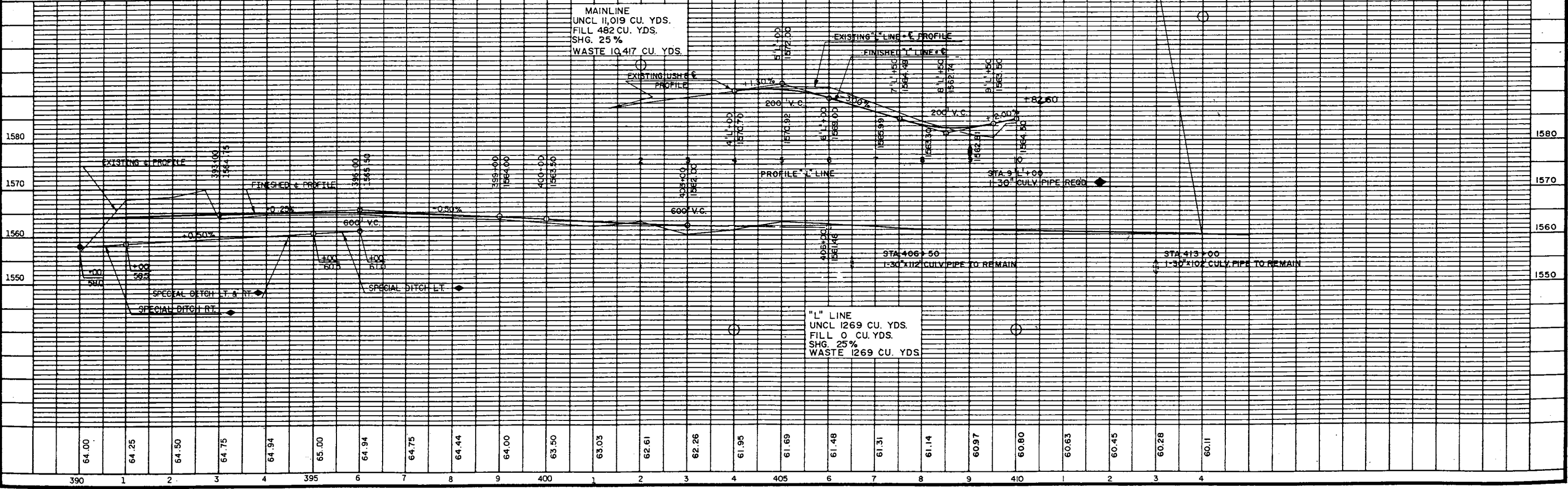
PROJECT I.D. 1593-1-74	SHEET NUMBER 5.11	TOTAL SHEETS
Plan & Profile Sta. 390+00 - Sta. 414+00 For U.S.H. 8 Oneida County		



BENCH MARKS

NO.	STATION	DESCRIPTION	ELEV.
36	390+00	LAG BOLT IN 30" N. PINE 90' RT.	1560.70
37	400+15	LAG BOLT IN 18" W. PINE 230' LT.	1574.83

NET LENGTH OF CENTERLINE STA. 390+00-414+00=2400' LIN.FT.



A 653

A 653

STATE PROJECT NUMBER
1593-01-74

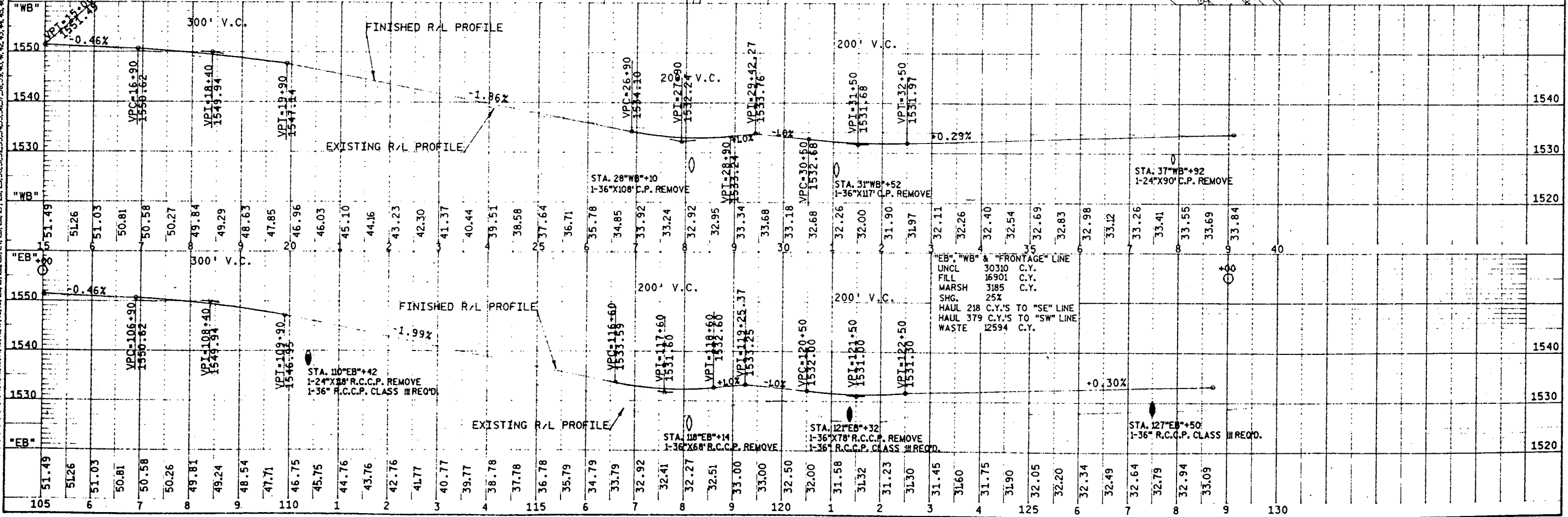
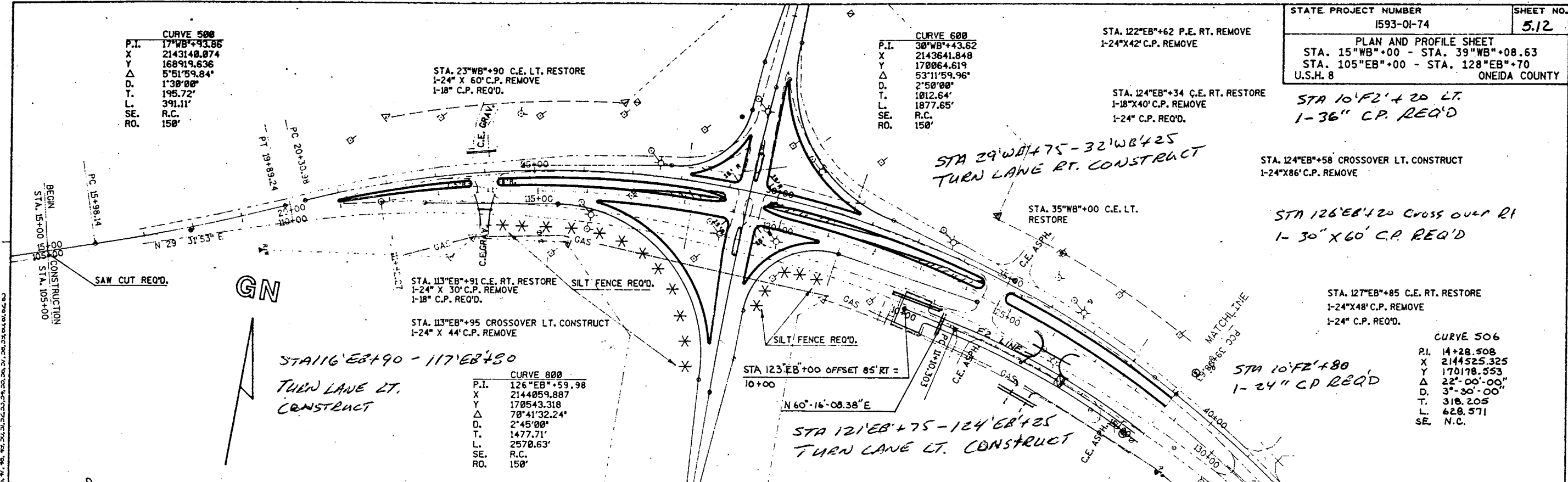
SHEET NO.
5.12

PLAN AND PROFILE SHEET
STA. 15"WB"+00 - STA. 39"WB"+08.63
STA. 105"EB"+00 - STA. 128"EB"+70
U.S.H. 8 ONEIDA COUNTY

CURVE 500
P.I. 17"WB"+93.86
X 2143149.874
Y 168919.636
Δ 5'51"59.84"
D. 1'38"00"
T. 195.72'
L. 391.11'
SE. R.C.
RO. 150'

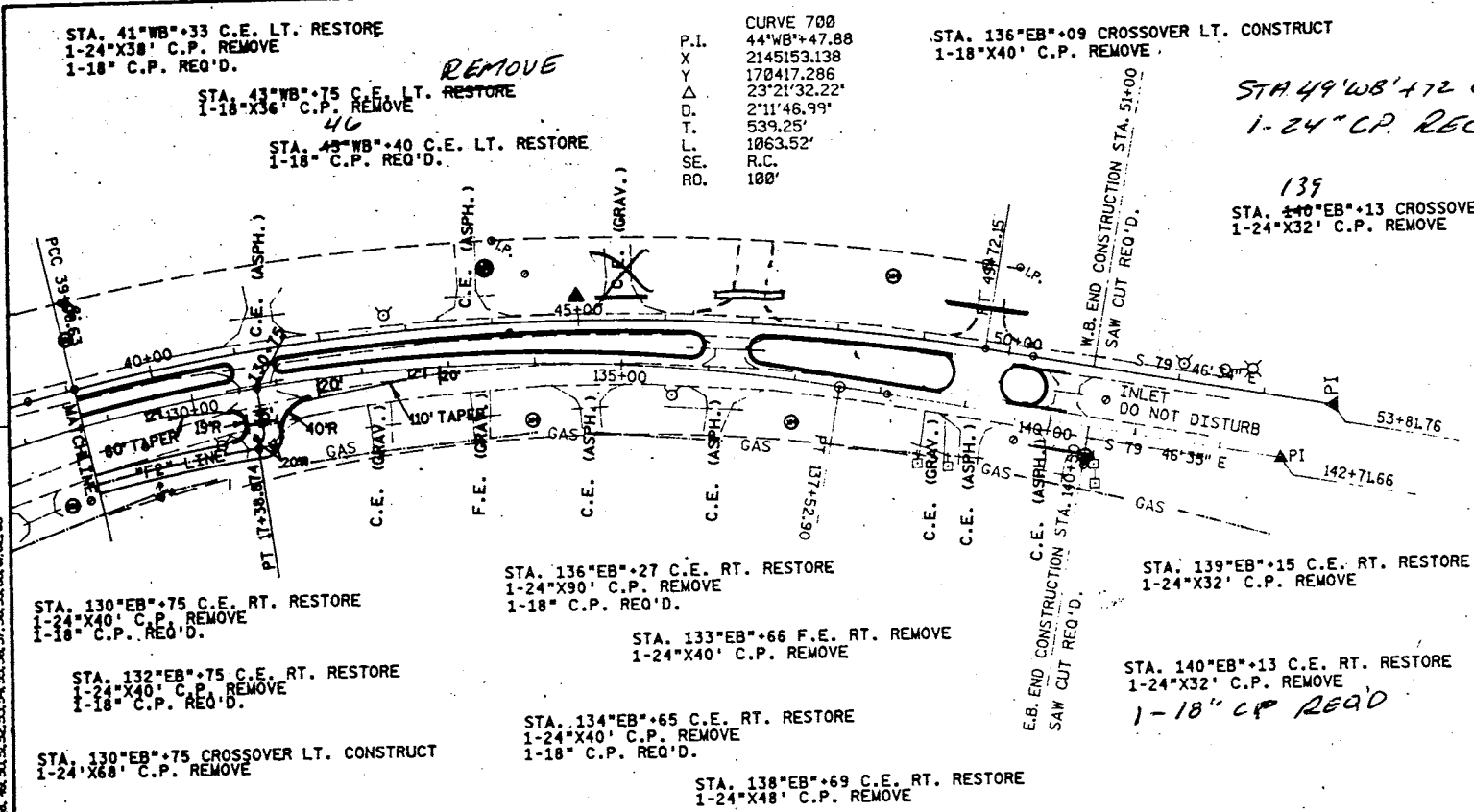
CURVE 600
P.I. 30"WB"+43.62
X 2143641.848
Y 170064.619
Δ 5'31"15.96"
D. 2'50"00"
T. 102.64'
L. 1877.65'
SE. R.C.
RO. 150'

CURVE 506
P.I. 14+28.508
X 2144525.325
Y 170178.553
Δ 22'-00"-00"
D. 3'-30"-00"
T. 318.205
L. 628.571
SE. N.C.

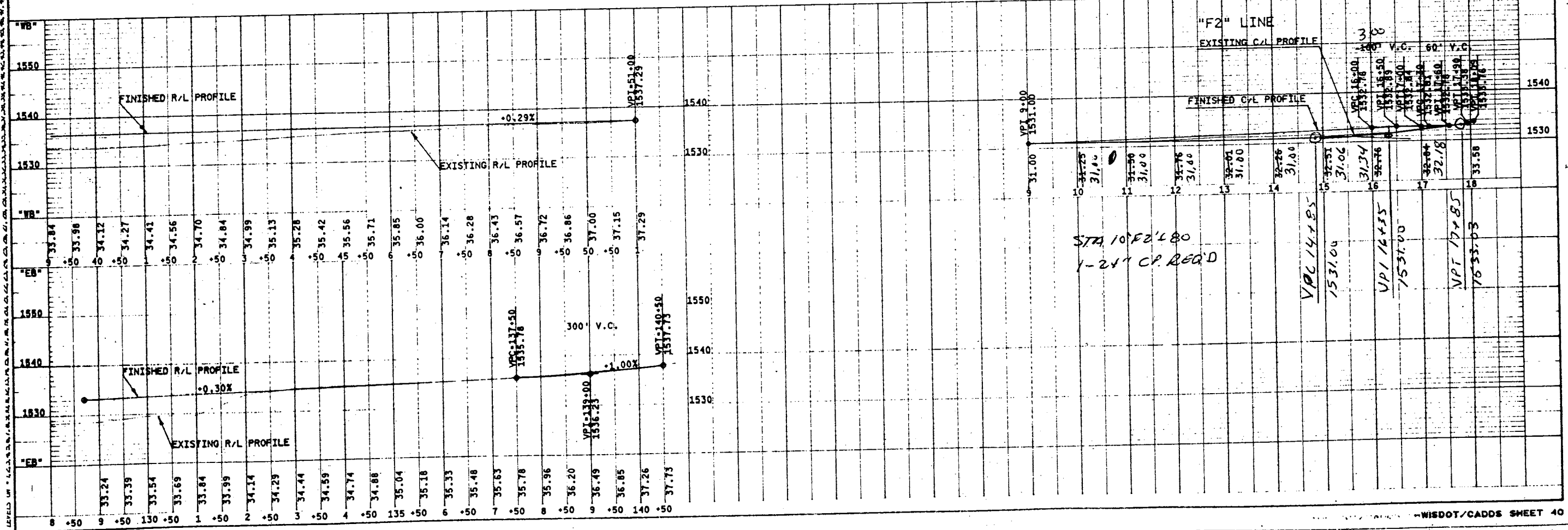


STATE PROJECT NUMBER 1593-01-74 SHEET NO. 5.13
 PLAN AND PROFILE SHEET FOR
 STA. 39+WB+08.63 - STA. 51+WB+00
 STA. 128+EB+70 - STA. 140+WB+50
 U.S.H. 8 ONEIDA COUNTY

A653

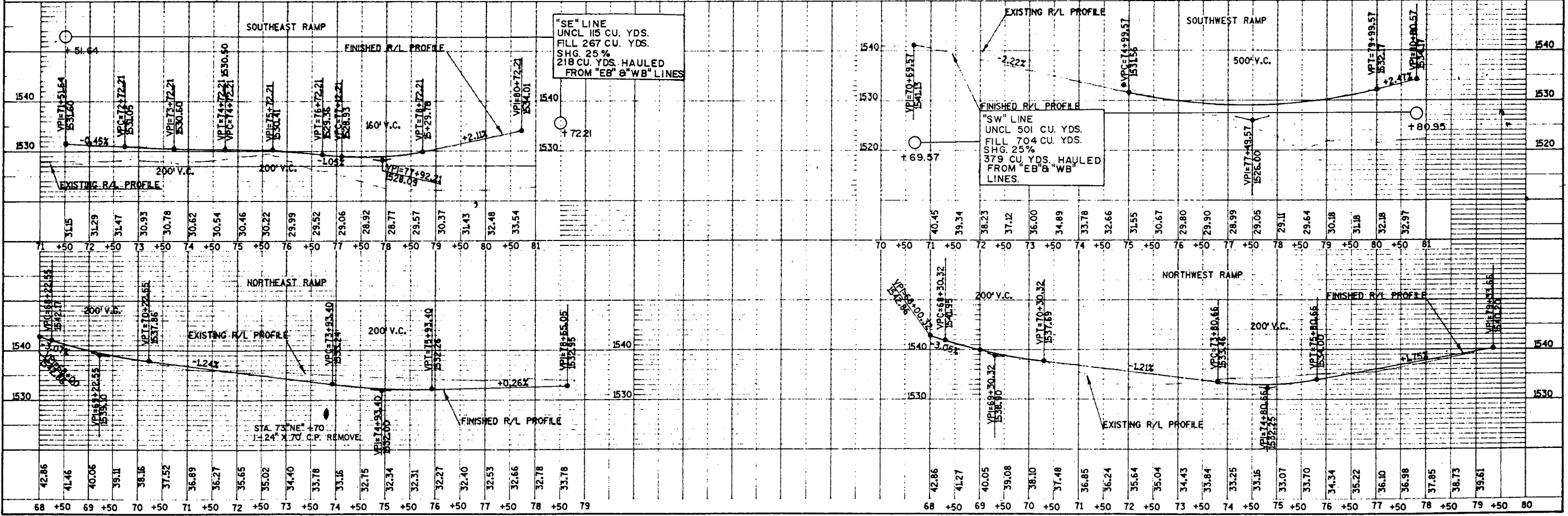
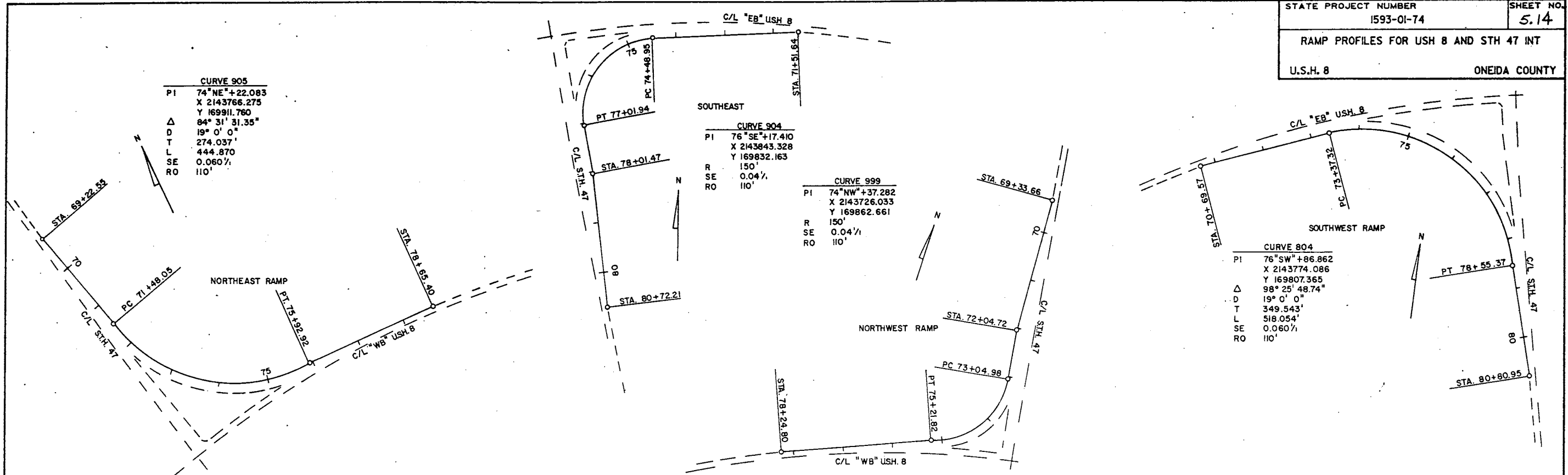


CURVE 800
 P.I. 126+EB+59.98
 X 2144059.887
 Y 170543.318
 Δ 70°41'32.24"
 D. 2'45'00"
 T. 1477.71'
 L. 2570.63'
 SE. R.C.
 RO. 150'



A653

STATE PROJECT NUMBER 1593-01-74	SHEET NO. 5.14
RAMP PROFILES FOR USH 8 AND STH 47 INT	
U.S.H. 8	ONEIDA COUNTY



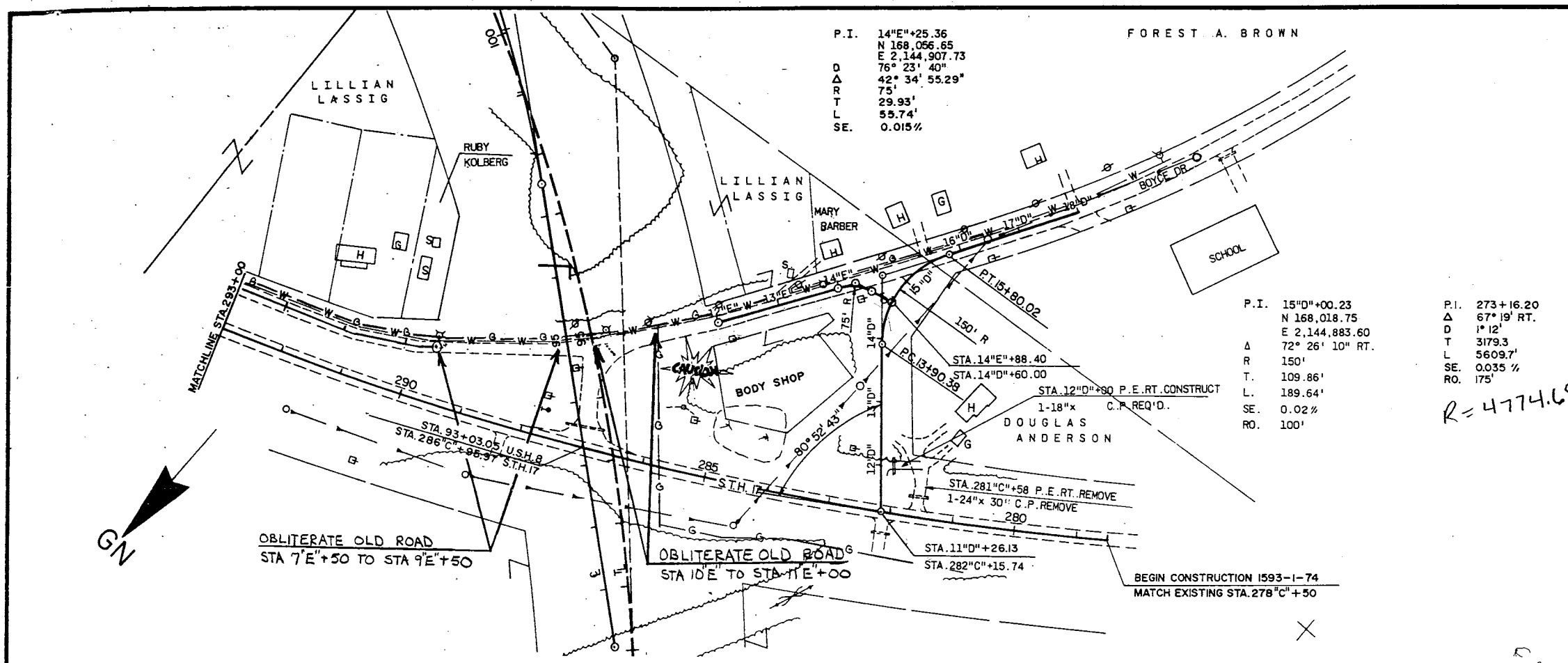
PROJECT I.D. 1593-1-74	SHEET NUMBER 5.15	TOTAL SHEETS
PLAN & PROFILE STA. 278 ^C +50 - STA. 293 ^C +00		
U.S.H.8		ONEIDA COUNTY

P.I. 14^E+25.36
N 168,056.65
E 2,144,907.73
76° 23' 40"
42° 34' 55.29"
75'
29.93'
55.74'
SE. 0.015%

P.I. 15^D+00.23
N 168,018.75
E 2,144,883.60
72° 26' 10" RT.
150'
109.86'
189.64'
SE. 0.02%
RO. 100'

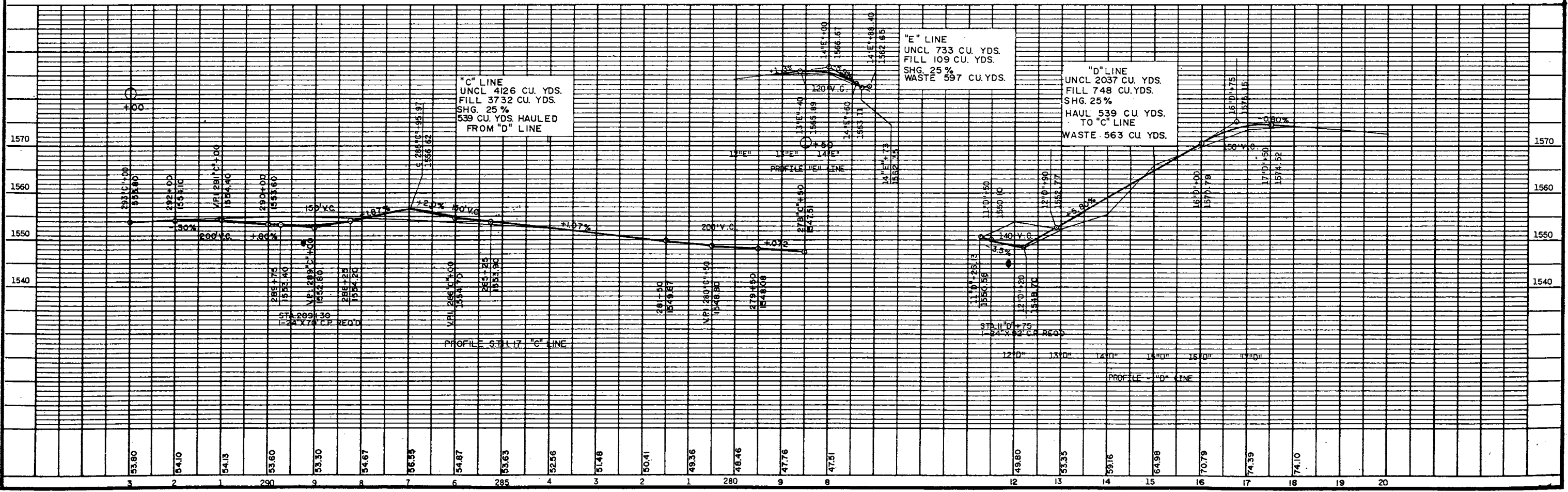
P.I. 273+16.20
Δ 67° 19' RT.
D 1' 12"
T 3179.3
L 5609.7'
SE. 0.035 %
RO. 175'

R=4774.65

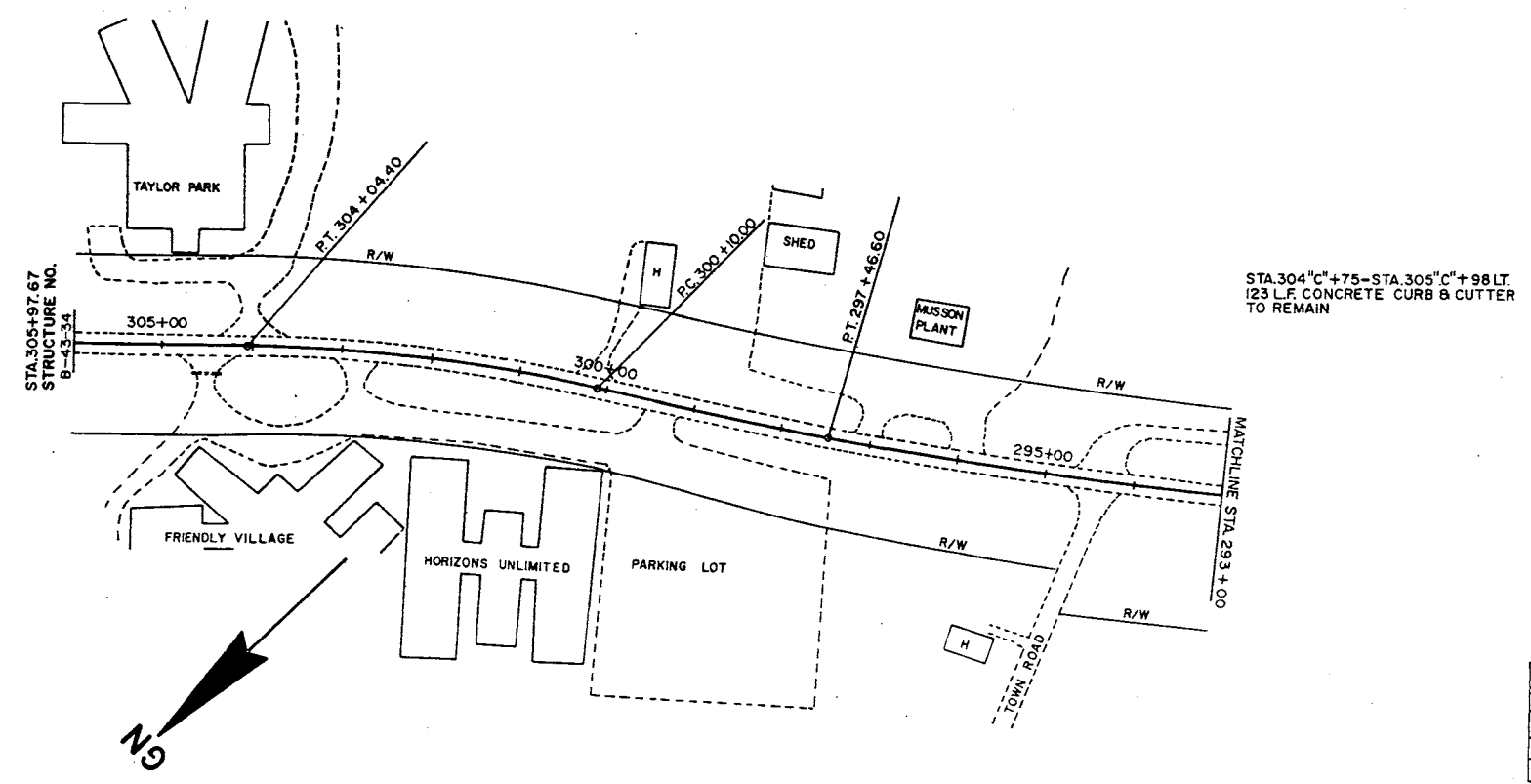


BENCH MARKS

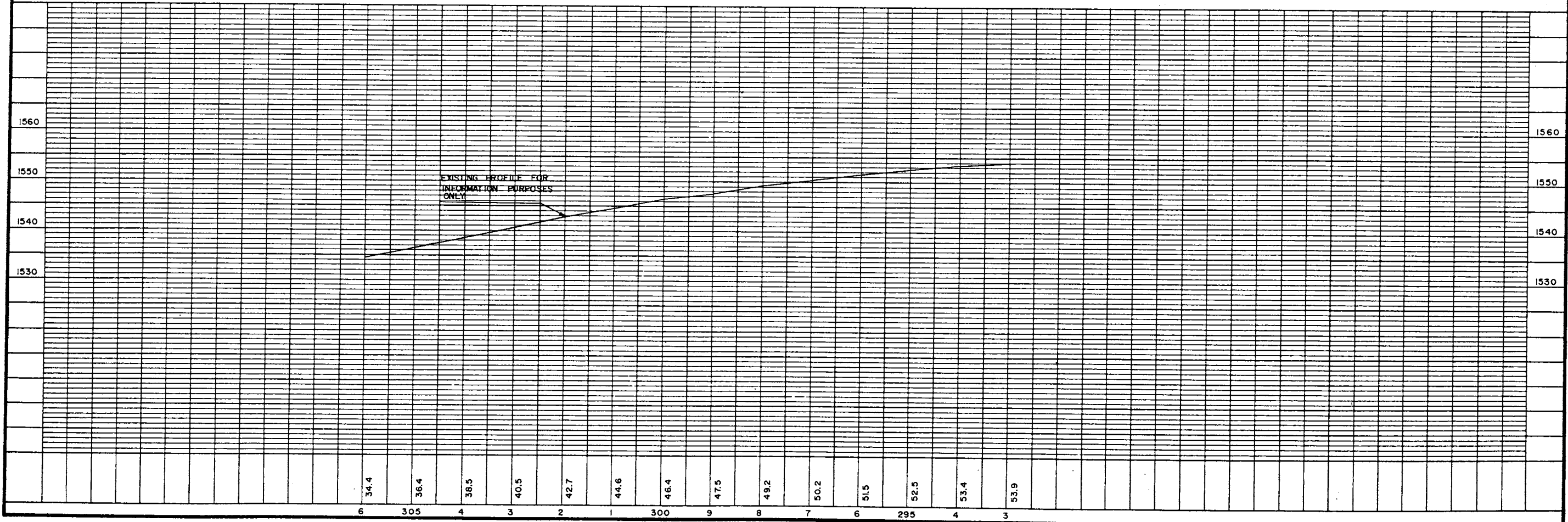
NO.	STATION	DESCRIPTION	ELEV.
4	92+45	LAG BOLT IN 12" WHITE BIRCH 130' LT.	1545.90



STATE PROJECT NUMBER	SHEET NO.
1593-1-74	5.16
PLAN & PROFILE STA. 293 ^C +00 - STA. 305 ^C +97.67	
U.S.H. 8	ONEIDA COUNTY



BENCH MARKS			
NO.	STATION	DESCRIPTION	ELEV.
5	305+93	BRASS CAP ON S.W. PARAPET 22' RT.	1536.89



A 658

A 658