

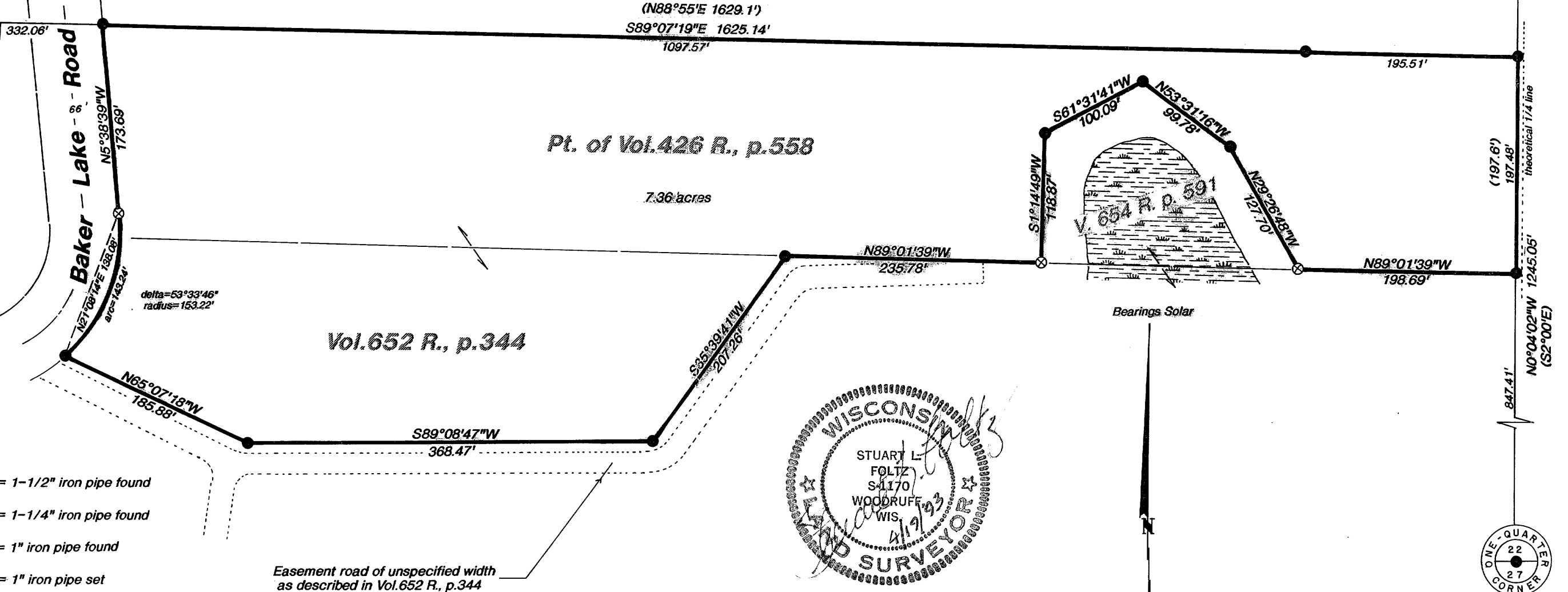
RECEIVED & FILED #
 Oneida County Surveyor's Office
 MAY 14 1993
 Date
 By
 OCS Area #

Improvements and encroachments, if any, have not been shown.

Vol. 448 R. p. 377

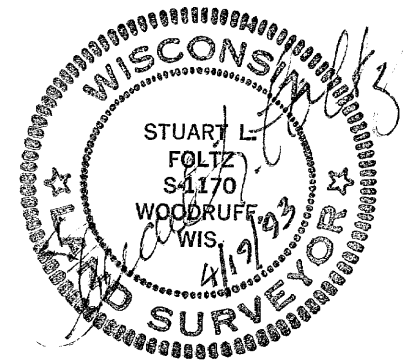
Center South 1/16 Corner
 1" iron pipe found (by Kowalke 1946)

Baker
 Lake

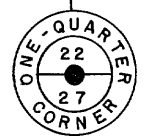
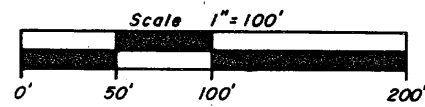


- = 1-1/2" iron pipe found
- ⊗ = 1-1/4" iron pipe found
- = 1" iron pipe found
- = 1" iron pipe set
- () = previously recorded

Easement road of unspecified width
 as described in Vol. 652 R., p. 344



Bearings Solar



Oneida County aluminum monument found

Part of the
SE 1/4 of the SW 1/4
SECTION 22, T39N, R6E

Town of Minocqua
 Oneida County, Wisconsin

I hereby certify that this survey and the above map were made in accordance with acceptable professional standards and that the information contained thereon is, to the best of my knowledge, information and belief, a true and accurate representation thereof. Any legal descriptions conforming to this survey have been provided on separate sheets. The above survey was made by order of Leroy G. DeLand.

Inman • Foltz and Associates, Inc.
 architects engineers surveyors

8612 highway 51 north
 minocqua, wisconsin 54548 [715] 356-9485

A 6 5 9 M

A 6 5 9 M