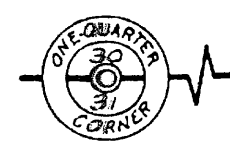
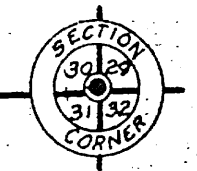


A 6 6 0 W

A 6 6 0 W

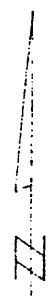


6" W. Pine
S 69° E, 54.0'
5" W. Pine
S 80° W, 13.6'



16" W. Pine
S 41° W, 75.4'

dec. 2" E

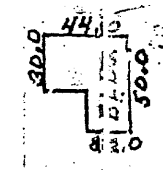


S 88° 24' W 2679.0'
387.0' 587.4'

S 24° 40' E
225.0'

N 88° 24' W
387.0'

HARSHAW ROAD
N 24° 40' W
225.0'
66'

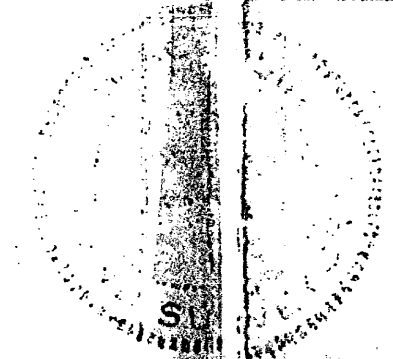


- iron pipe with brass cap
- iron pipe

Part of
NE 1/4 of the NE 1/4
SECTION 31, T 37N, R 7E

Oneida County, Wis.

Scale 1" = 100'
December, 1965



Northwoods Surveyors

James J. Fisher
Land Surveyor

RECEIVED & FILED #.....
Oneida County Surveyor's Office
Date: MAY 28 1993
By: *[Signature]*
OCS Area #.....

A 6 6 0 W

A 6 6 0 W