

A 6 22 51

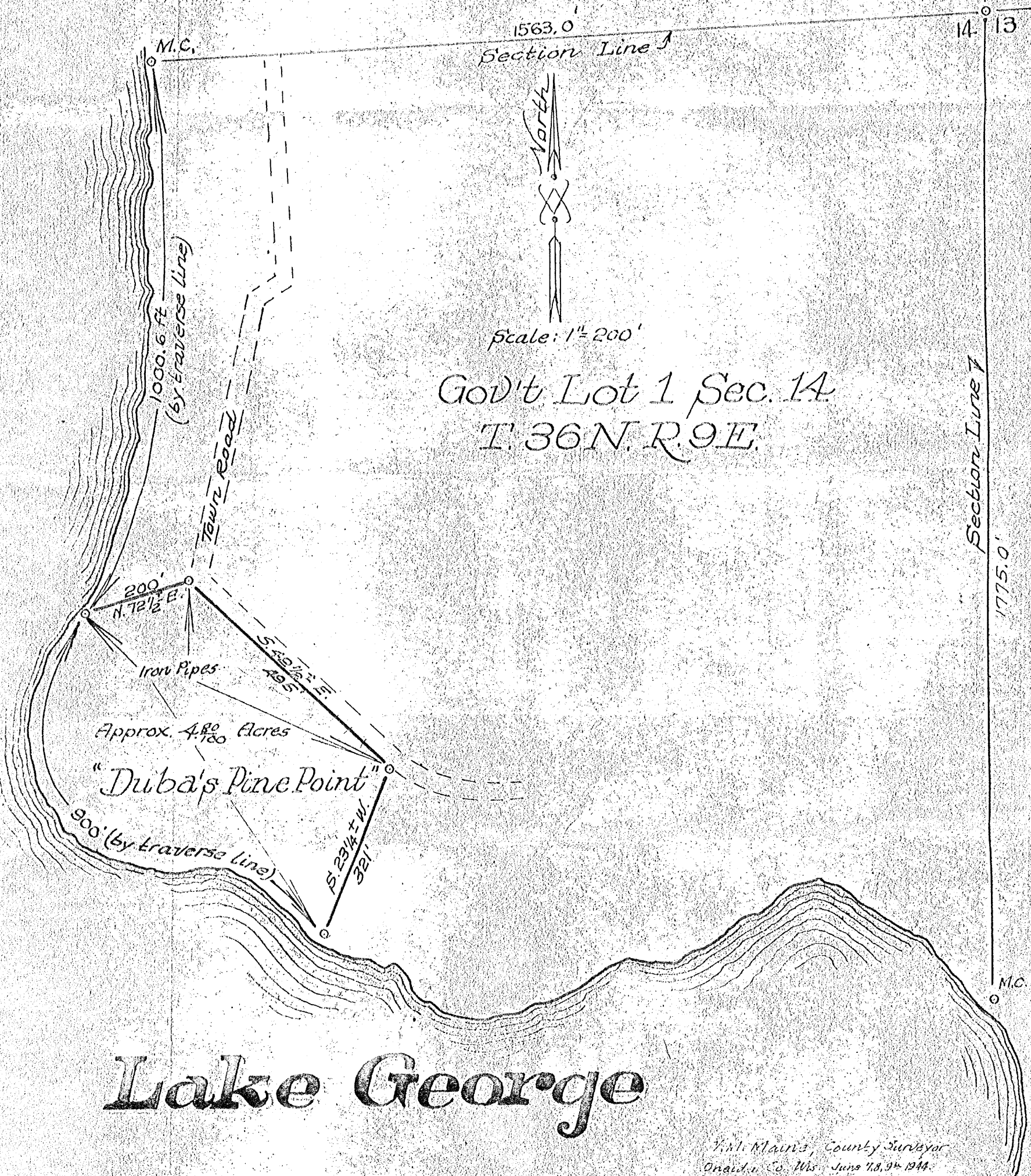
A 6 22 51

RECEIVED & FILED #.....  
 Oneida County Surveyor's Office  
 Date MAY 28 1993  
 By 90  
 OCS Area #.....

# Duba's Pine Point

A parcel of land consisting of approx.  $4\frac{80}{100}$  acres in Gov't Lot 1 Sec. 14, Township 36 North of Range 9 East, Oneida County, Wis.

Sec. Cor.  
 11 | 12  
 14 | 13



Gov't Lot 1 Sec. 14  
 T. 36 N. R. 9 E.

# Lake George

Wm. Main's, County Surveyor  
 Oneida Co. Wis. June 18, 9th 1944.

A 6 22 51

A 6 22 51