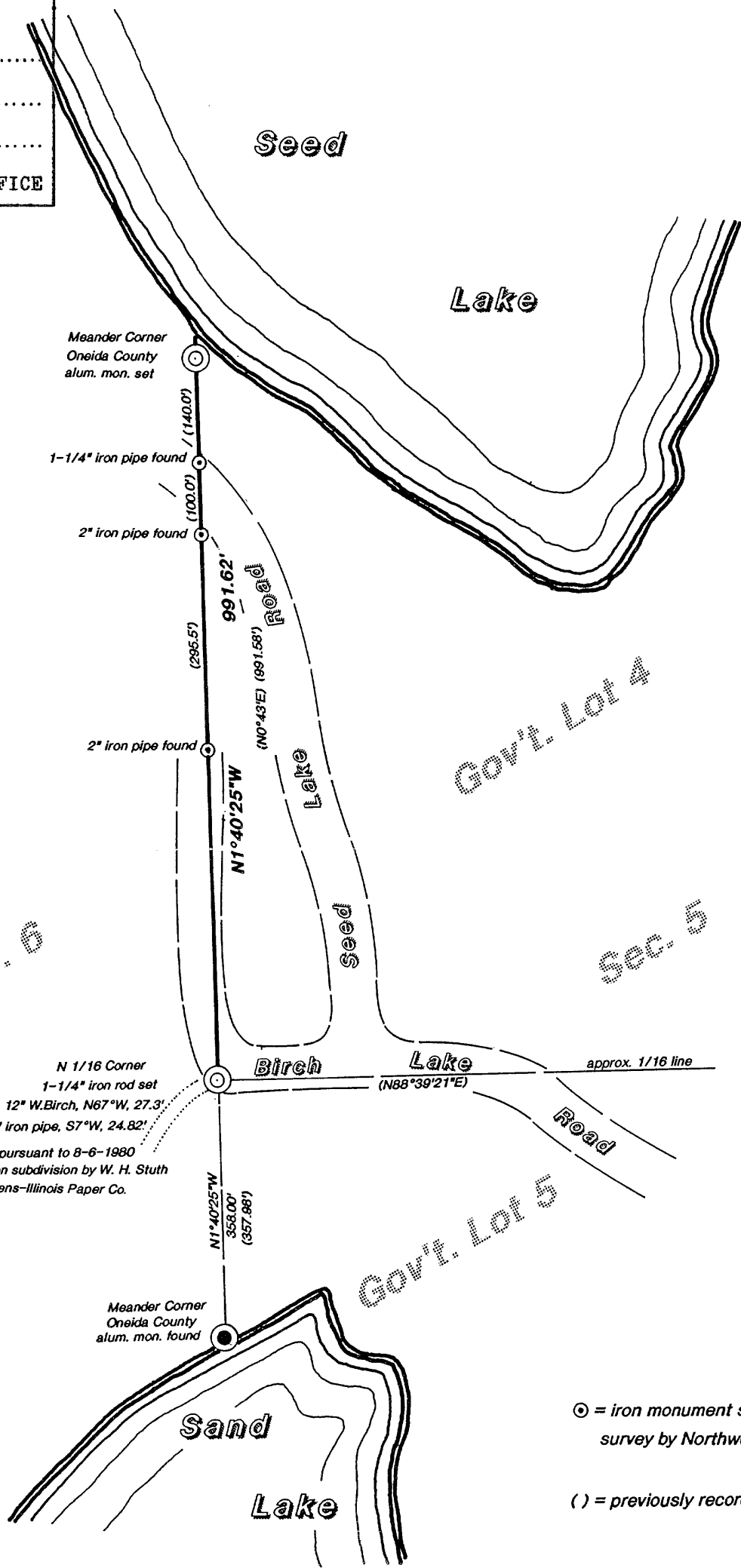


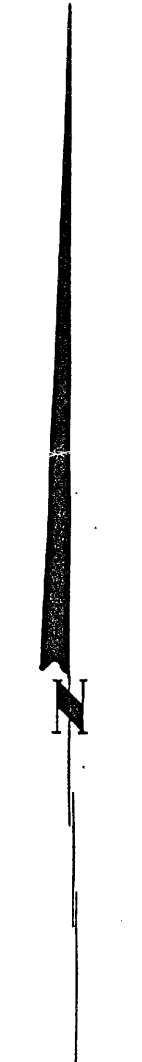
Inman • Foltz and Associates, Inc.
architects engineers surveyors
8812 highway 51 north
minocqua, wisconsin 54548 (715) 356-9485

Gov't. Lot 4
Section 5
Township 37 North
Range 7 East
County Oneida
State of Wisconsin

MAP # **A 6 6 4**
DATE FILED **AUG 16 1993**
BY **90**
DESCRIPTION FILED
ONEIDA CO. SURVEYOR'S OFFICE



Bearings Assumed



Scale:
1" = 200'

⊙ = iron monument shown on 1964 survey by Northwoods Surveyors

() = previously recorded

NOTE: No improvements or encroachments, if any, are shown on this survey.

I hereby certify that this survey and the above map were made in accordance with acceptable professional standards and that the information contained thereon is, to the best of my knowledge, information and belief, a true and accurate representation thereof.
Any legal descriptions conforming to this survey have been provided on separate sheets.
The above survey was made by order of Daniel Delich.

