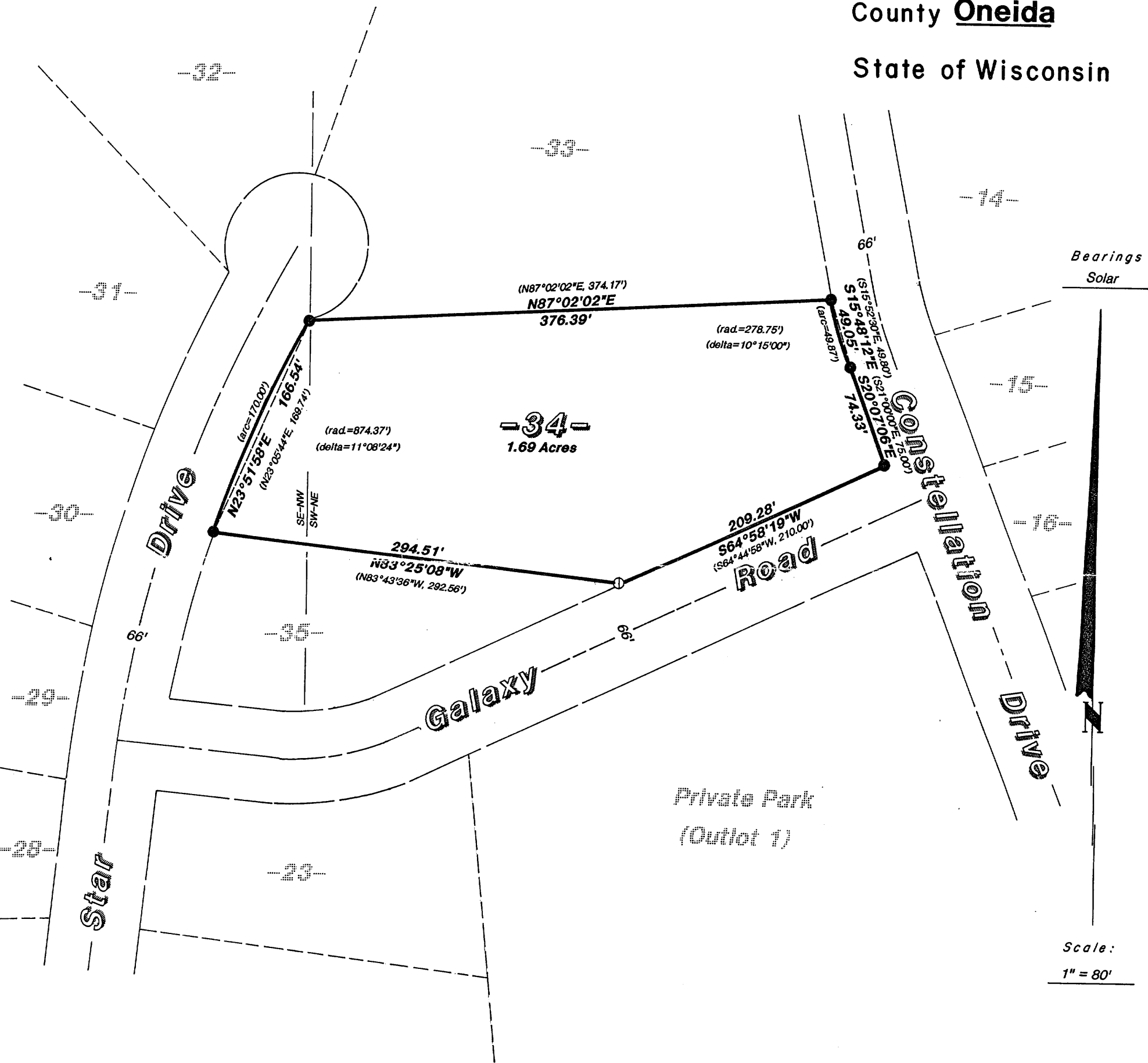


Inman • Foltz and Associates, Inc.
architects engineers surveyors
8812 highway 51 north
minocqua, wisconsin 54548 (715) 356-9485

MAP # A 6 6 5
DATE FILED AUG 16 1993
BY 90
DESCRIPTION FILED
ONEIDA CO. SURVEYOR'S OFFICE

Part of the
SE1/4 of the NW1/4
and part of the
SW1/4 of the NE1/4
Section 22
Township 39 North
Range 6 East
County Oneida
State of Wisconsin

LOT -34-
of
DOOLITTLE-BARDEN'S NORTHERN-LIGHTS DIV. 2



I hereby certify that this survey and the above map were made in accordance with acceptable professional standards and that the information contained thereon is, to be best of my knowledge, information and belief, a true and accurate representation thereof. Any legal descriptions conforming to this survey have been provided on separate sheets. The above survey was made by order of John Schmidt.

