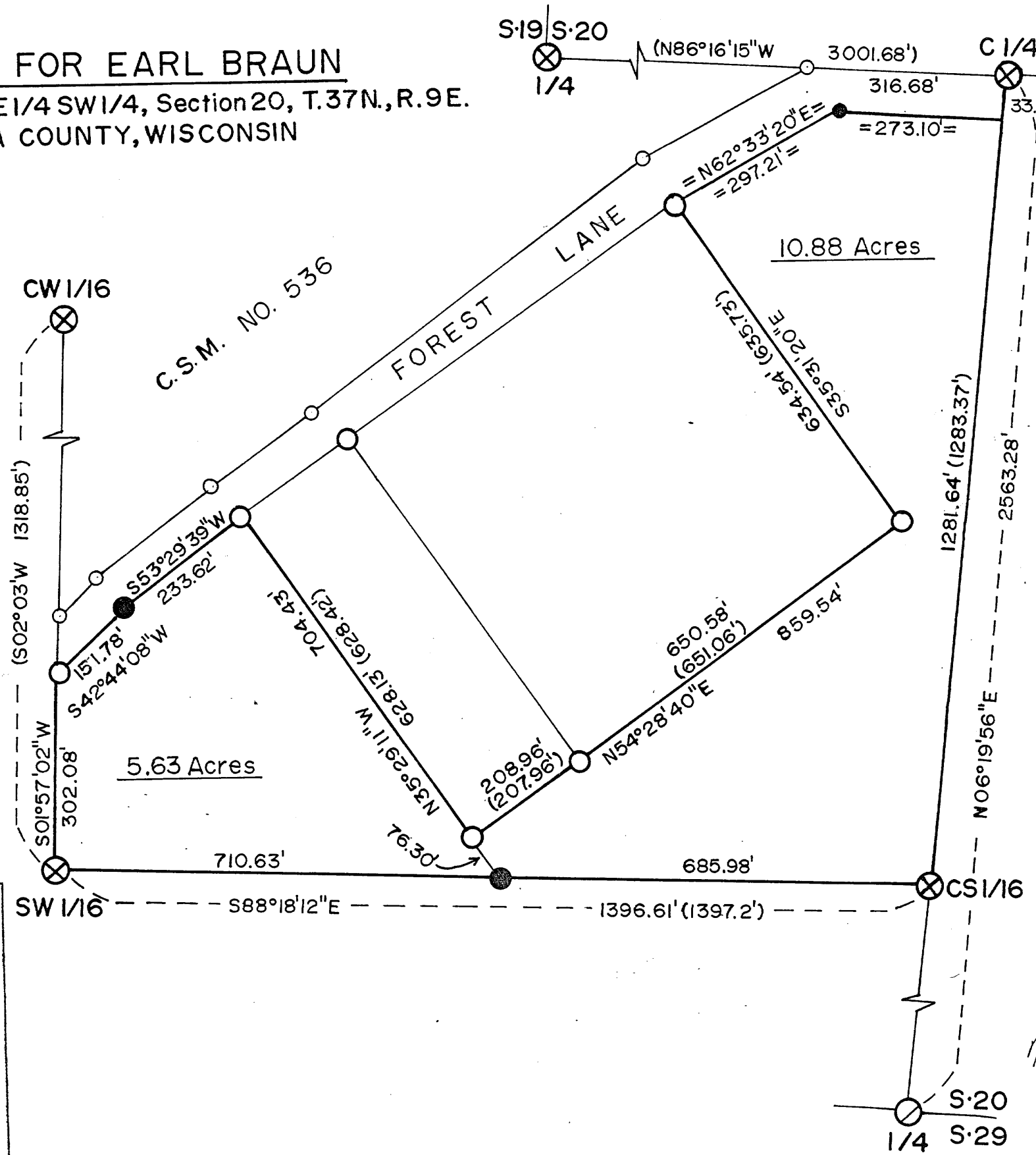


# SURVEY FOR EARL BRAUN

Being Part of NE 1/4 SW 1/4, Section 20, T.37N., R.9E.  
ONEIDA COUNTY, WISCONSIN



### LEGEND

- ⊗ - Found controlling corners - GLO & RIPCO section subdivision corners.
- ○ - Found iron pipes from previous surveys.
- - Monument not located.
- - Set 1" x 24" iron pipes.
- (XXX) - Data from previous surveys.
- =XXX= - Data not confirmed.



SCALE: 1" = 200'

### Surveyors Affidavit:

I, Milo E. Stefan, R.L. S. #1558, a licensed land surveyor in the State of Wisconsin, and at the request of Earl Braun have surveyed and divided a part of the NE 1/4 SW 1/4 of Section 20, Township 37 North, Range 9 East and have located and confirmed the bounds of said tract. This Plat Map is a correct and true representation of the lands surveyed and marked to the best of my abilities.

Milo E. Stefan 8/6/93  
Milo E. Stefan, RLS #1558 Date



MAP # A 6 7 0  
DATE FILED SEP 09 1993  
BY [Signature]  
DESCRIPTION FILED  
ONEIDA CO. SURVEYOR'S OFFICE

STEFAN SURVEYORS  
By: MES Date: 8/6/93

A 6 7 0

A 6 7 0

A 6 7 0