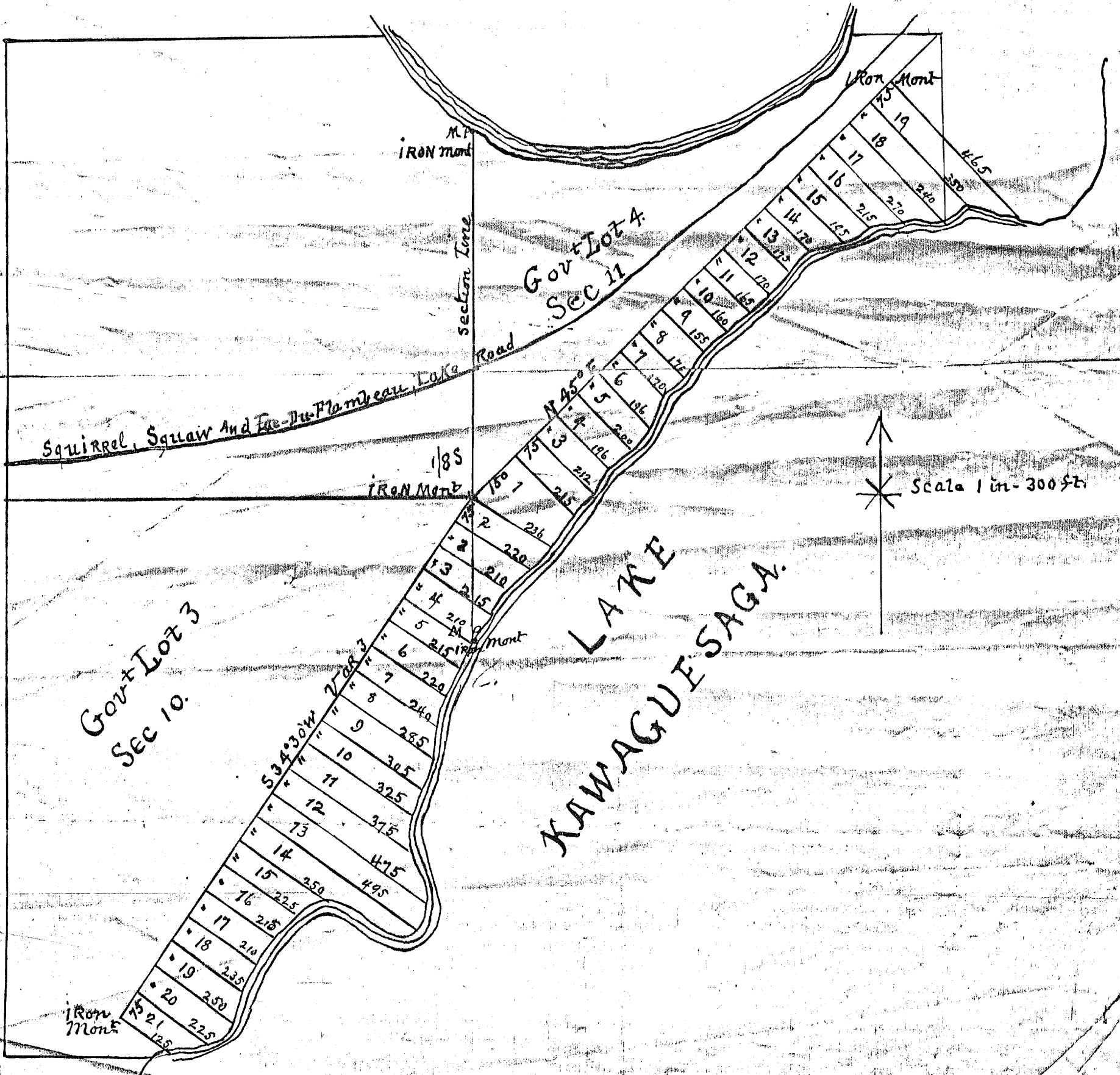


A 6 75

Plat of Crescent Park in Secs 10 and 11 Town 39 N R 6 East Gov't Lots 3 and 4.

MAP # A 6 75
 DATE FILED OCT 21 1933
 BY.....
 DESCRIPTION FILED.....
 ONEIDA CO., SURVEYOR'S OFFICE



A 6 75

A 6 75