

(Approx. 1/4 Line) N 86° 30' E - 1285'

Approx. 1/16 (Not Set)

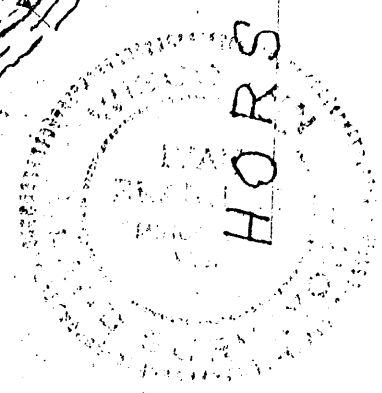
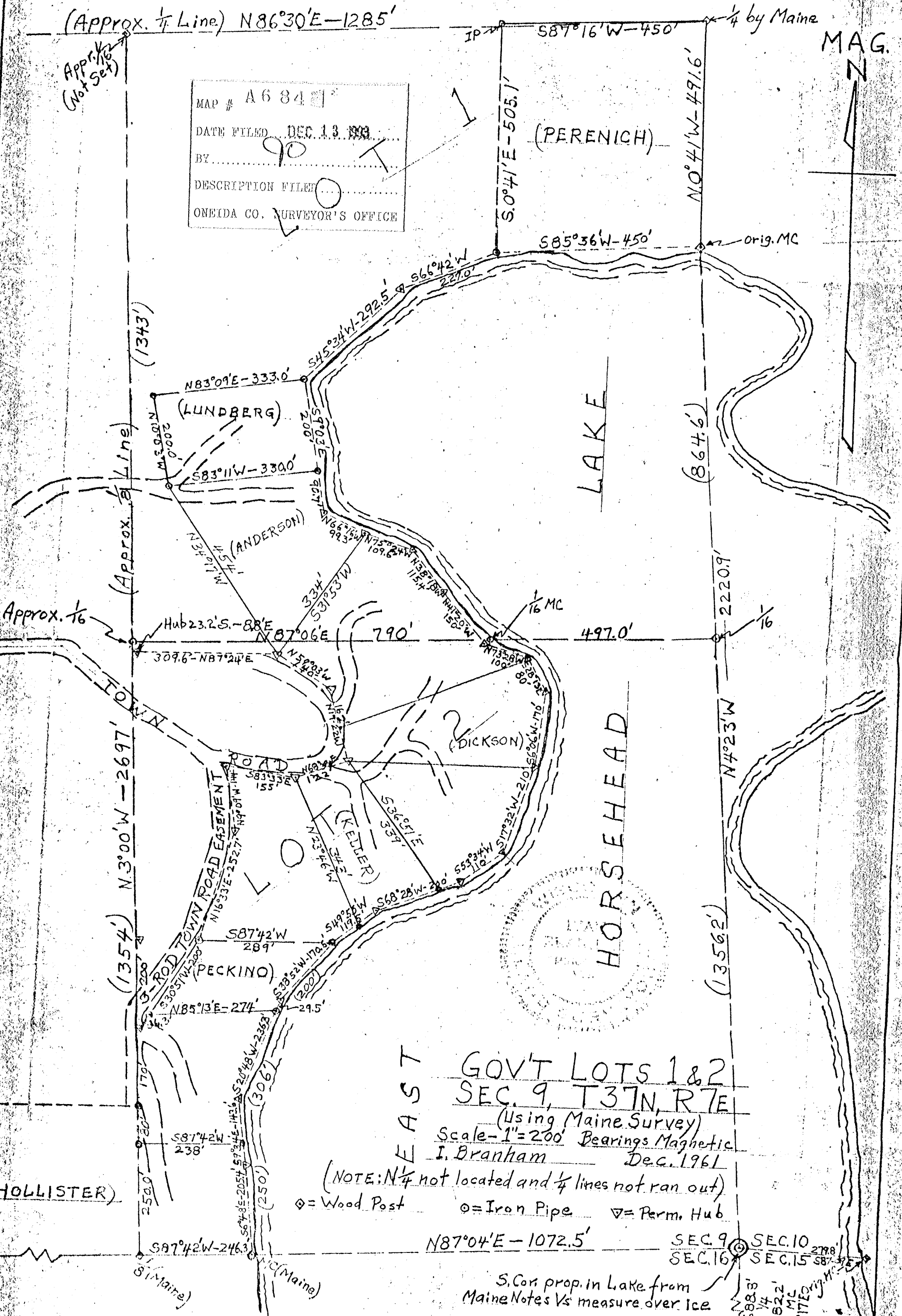
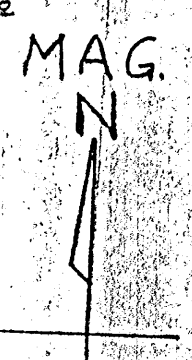
MAP # A 6 8 4

DATE FILED DEC. 13 1961

BY 90 T

DESCRIPTION FILED O

ONEIDA CO. SURVEYOR'S OFFICE



EAST

GOV'T LOTS 1 & 2

SEC. 9, T37N, R7E

(Using Maine Survey)

Scale - 1" = 200' Bearings Magnetic

I. Branham Dec. 1961

(NOTE: N 1/4 not located and 1/4 lines not ran out)

◇ = Wood Post      ○ = Iron Pipe      ▽ = Perm. Hub

N 87° 04' E - 1072.5'

SEC. 9      SEC. 10

SEC. 16      SEC. 15

S. Cor. prop. in Lake from Maine Notes Vs measure over Ice

2688.3' to 1/4

3082.2' to MC

5217.0' orig. M.