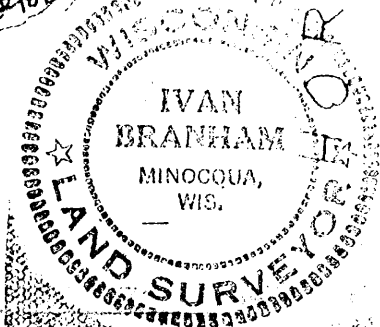
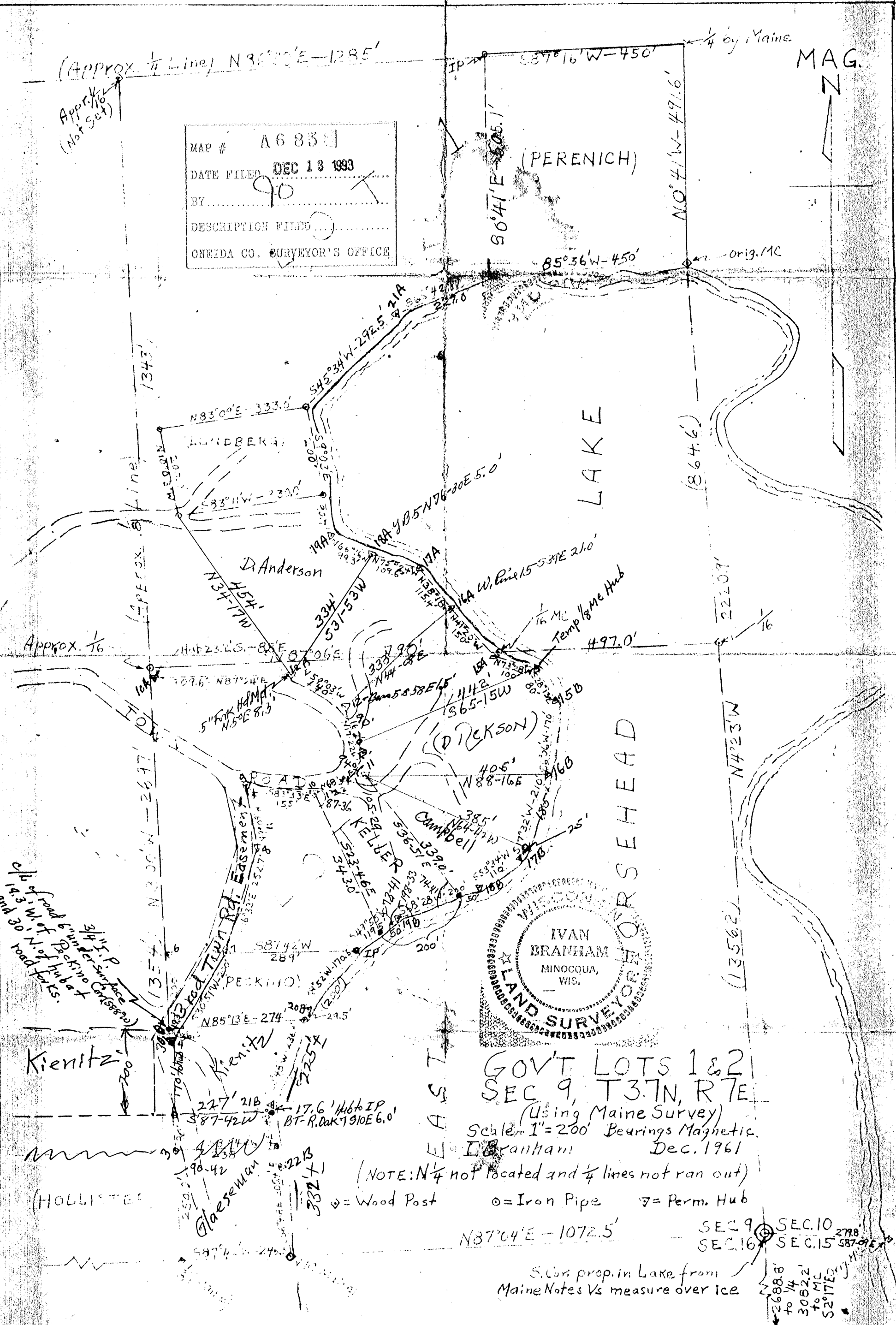
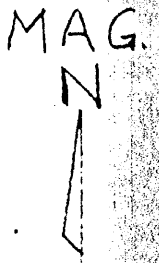


(Approx. 1/4 Line) N 36° 20' E - 1285'

Appr. 1/16
(Not Set)

MAP # A683
 DATE FILED DEC 13 1993
 BY 90
 DESCRIPTION FILED
 ONEIDA CO. SURVEYOR'S OFFICE



GOV'T LOTS 1 & 2
 SEC 9, T3.7N, R7E
 (Using Maine Survey)
 Scale - 1" = 200' Bearings Magnetic.
 Dec. 1961
 I Branham

(NOTE: N 1/4 not located and 1/4 lines not ran out)
 ○ = Wood Post ○ = Iron Pipe ▽ = Perm. Hub

N 87° 04' E - 1072.5'
 SEC 9 SEC 10
 SEC 16 SEC 15

S. Cor. prop. in Lake from
 Maine Notes Vs measure over Ice

22688.8'
 to 1/4
 30522.2'
 to MC
 5217E