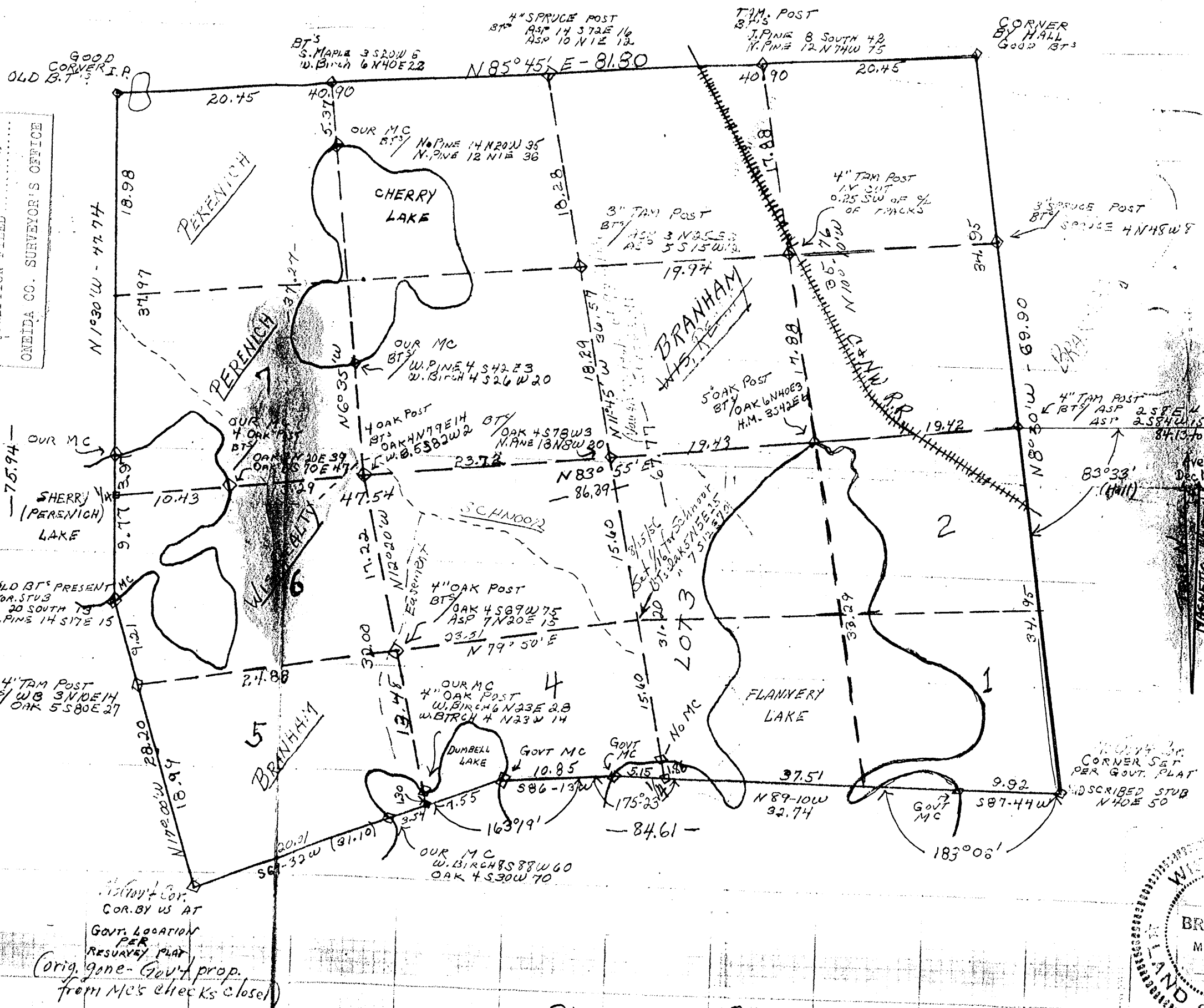


MAP # A 688
 DATE FILED DEC 13 1928
 BY [Signature]
 DESCRIPTION FILED
 ONEIDA CO. SURVEYOR'S OFFICE



RESURVEY PLAT
 OF
 SECTION 28 T37N R8E
 4TH PRINCIPAL MERID.
 WISCONSIN
 BY E. Branham
 For C.V. BRANHAM LBR. CO.

SURVEYED BY STAFF COMPASS
 AND CHAIN WITH THE EXCEPTION
 OF THE THREE ANGLES INDICATED
 ON THE PLAT, BY TRANSIT.

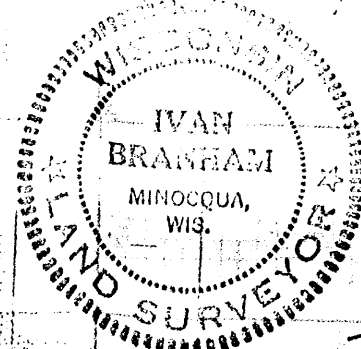
ALL BEARINGS MAGNETIC
 SCALE 1" = 10 CHAINS

NOTE: THE SOUTH LINE IS TAKEN
 FROM A GOVERNMENT RESURVEY
 PLAT OF SECTION 33 T37N
 R8E WISCONSIN.

DATED AND SIGNED AT
 THE GENERAL LAND OFFICE,
 WASHINGTON, D.C. JUNE
 19, 1928.

(CHECKED BY OUR TRAVERSE)

MARCH 27, 1956



Notes of this plat -
 G.V. Branham
 and Minocqua
 H.W. Weten
 Wis. Realty
 Park Falls

E. Branham
 Field B...