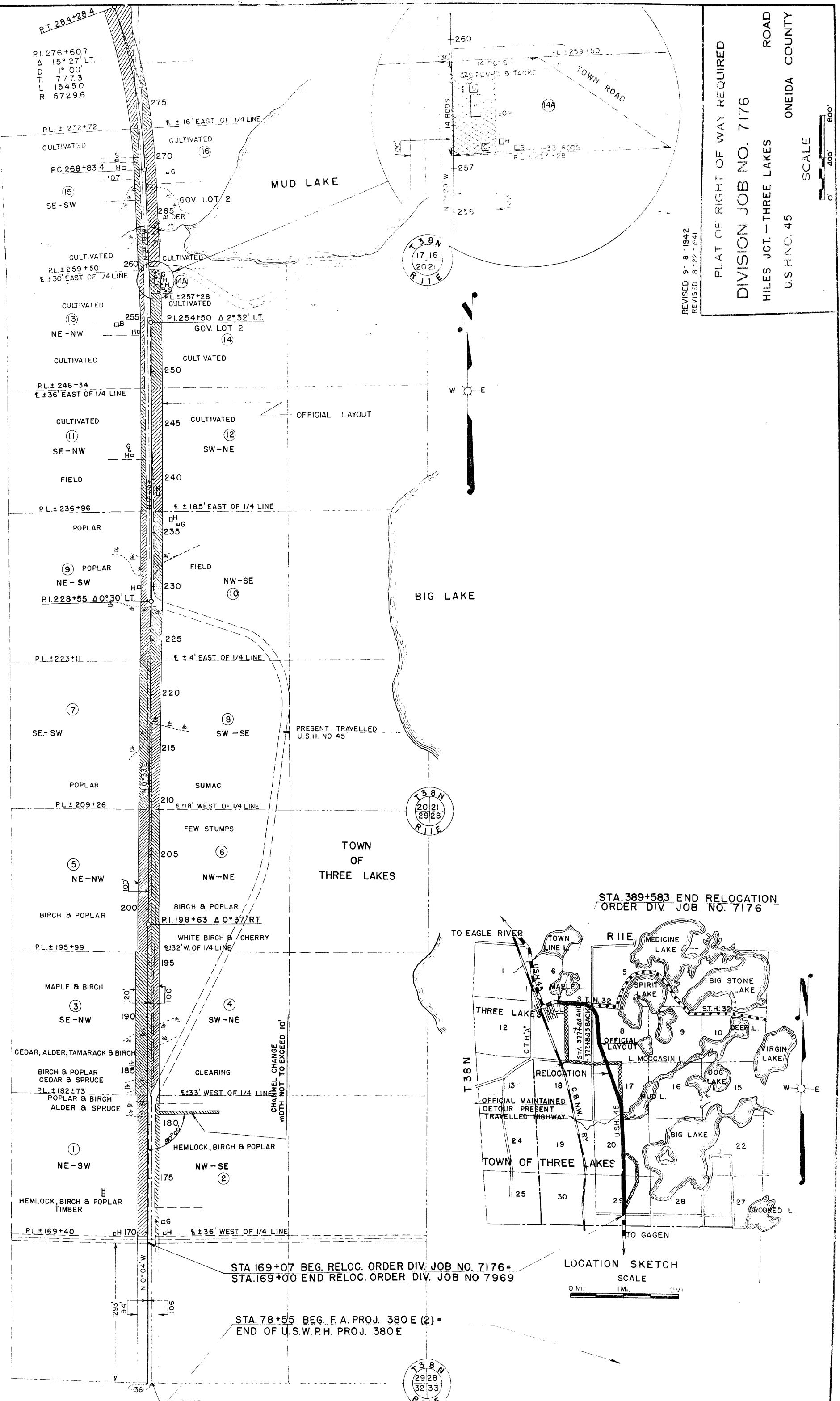


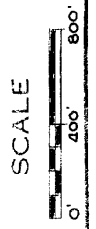
PL.	276+60.7
Δ	15° 27' LT.
D.T.	1° 00'
L.L.	777.3
R.	1545.0
	5729.6

DIVISION JOB NO. 7176



PLAT OF RIGHT OF WAY REQUIRED
 DIVISION JOB NO. 7176
 HILES JCT. - THREE LAKES ROAD
 U.S.H. NO. 45
 ONEIDA COUNTY

REVISED 9-8-1942
 REVISED 8-22-1941

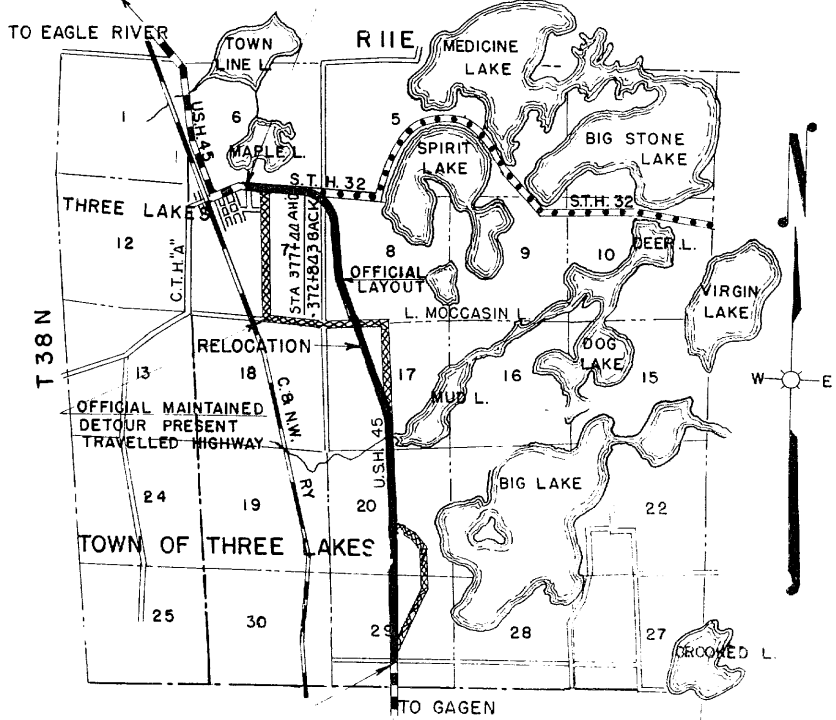


T 38 N
 17 16
 20 21
 R 1 E

T 38 N
 20 21
 29 28
 R 1 E

T 38 N
 29 28
 32 33
 R 1 E

STA. 389+583 END RELOCATION
 ORDER DIV. JOB NO. 7176



STA. 169+07 BEG. RELOC. ORDER DIV. JOB NO. 7176 =
 STA. 169+00 END RELOC. ORDER DIV. JOB NO. 7969

STA. 78+55 BEG. F.A. PROJ. 380 E (2) =
 END OF U.S.W.P.H. PROJ. 380 E

CHANNEL CHANGE
 WIDTH NOT TO EXCEED 10'

1293'
 9.4'

106'

170'

14 COR.