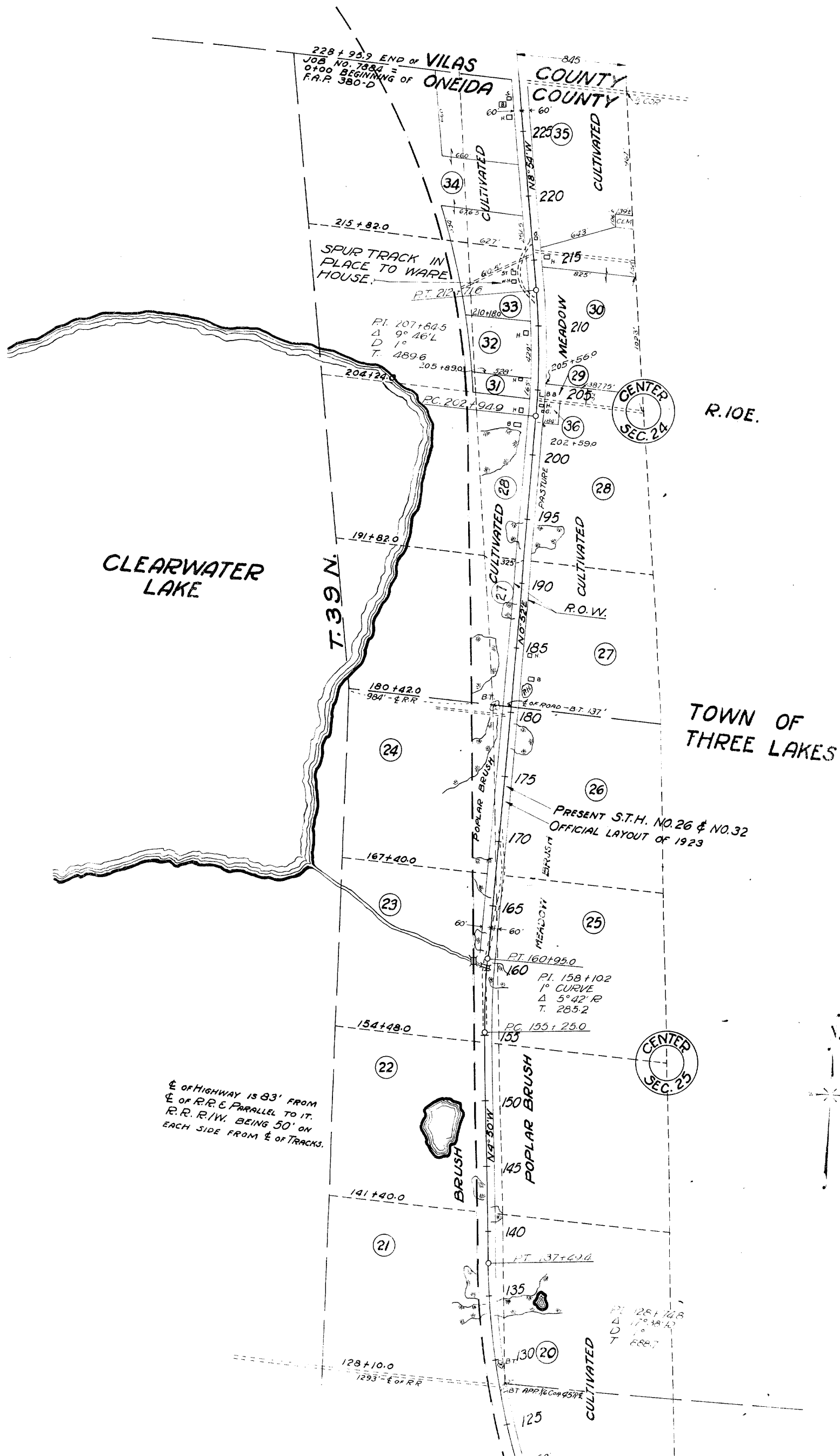


STATE	WIS.	7884	5	45
PROJECT NO.	7884	5	45	
DIVISION	7884	5	45	

DIVISION JOB NO 7884

SEC. 13



PLAT OF RIGHT OF WAY REQUIRED
 STATE AID PROJECT NO. 7884
 THREE LAKES - NORTH COUNTY LINE ROAD
 ST. NO. 26 & 32 ONEIDA COUNTY
 SCALE = 1000 FEET