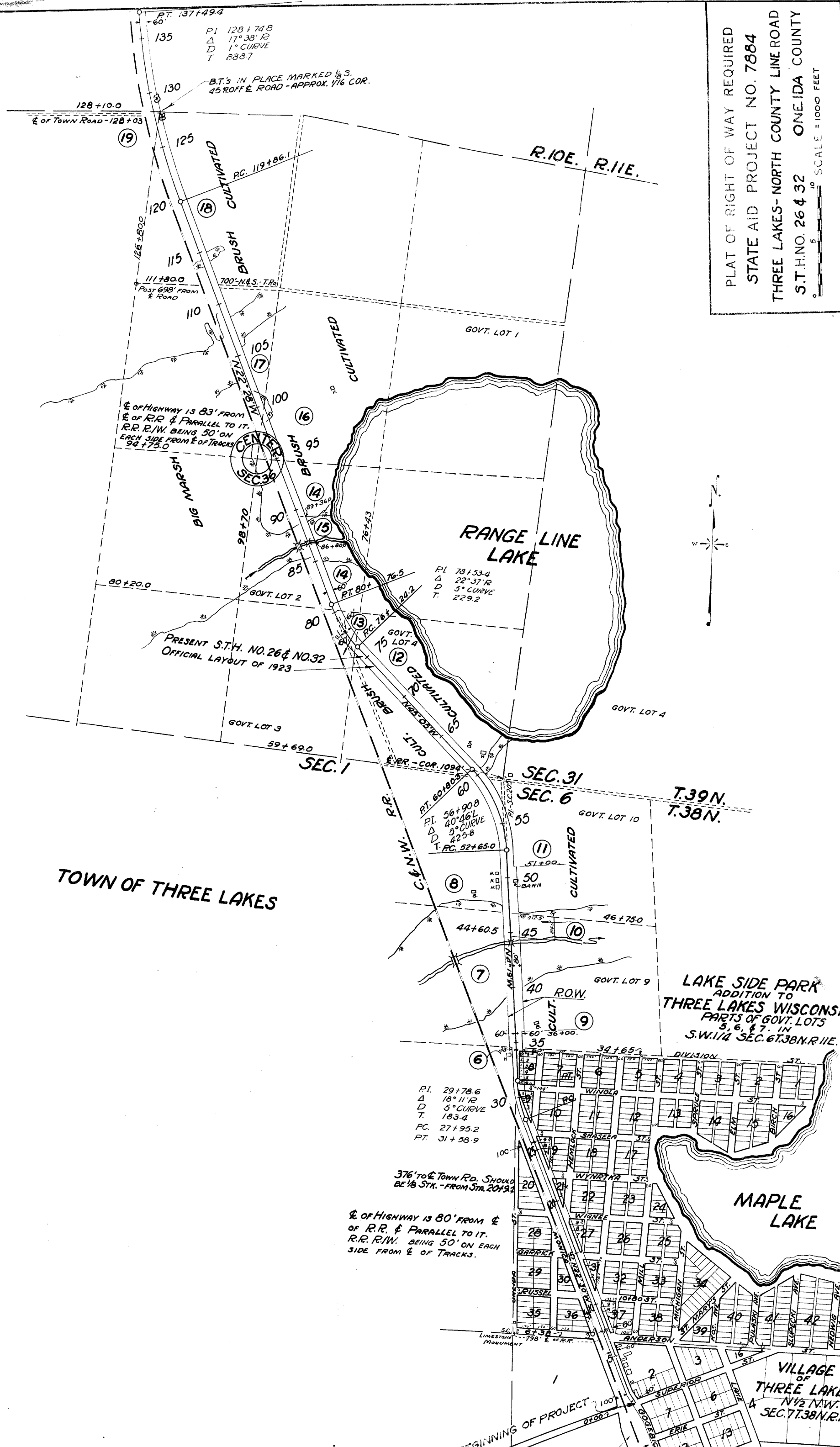


FED. ROAD DIST. NO.	STATE	PROJ. NO.	SHEET NO.	TOTAL SHEETS
7884	WIS.	4	45	45

DIVISION JOB NO. 7884



PLAT OF RIGHT OF WAY REQUIRED
 STATE AID PROJECT NO. 7884
 THREE LAKES-NORTH COUNTY LINE ROAD
 S.T.H. NO. 26 & 32 ONEIDA COUNTY

TOWN OF THREE LAKES

LAKE SIDE PARK
 ADDITION TO
 THREE LAKES WISCONSIN
 PARTS OF GOVT. LOTS
 5, 6, & 7. IN
 S.W. 1/4 SEC. 6, T.38N. R.11E.

MAPLE LAKE

VILLAGE
 OF
 THREE LAKES
 N 1/2 N.W.
 SEC. 7, T.38N. R.11E.

PT. 137+49.4
 -60'
 135
 PI 128+74.8
 Δ 17°38' R
 D 1° CURVE
 T 8887

B.T.'S IN PLACE MARKED 1/8 S.
 45' ROFF & ROAD - APPROX. 1/16 COR.

€ OF HIGHWAY IS 83' FROM
 € OF R.R. & PARALLEL TO IT.
 R.R. R.W. BEING 50' ON
 EACH SIDE FROM € OF TRACKS
 94+75.0

PRESENT S.T.H. NO. 26 & NO. 32
 OFFICIAL LAYOUT OF 1923

PI 78+53.4
 Δ 22°37' R
 D 5° CURVE
 T 229.2

PI 29+78.6
 Δ 18°11' R
 D 5° CURVE
 T 183.4
 PC 27+95.2
 PT 31+98.9

376' to € Town Rd. Should
 BE 1/8 STK. - FROM STN. 20+92.1

€ OF HIGHWAY IS 80' FROM €
 OF R.R. & PARALLEL TO IT.
 R.R. R.W. BEING 50' ON EACH
 SIDE FROM € OF TRACKS.

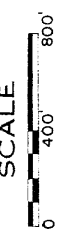
BEGINNING OF PROJECT

FED. ROAD DIST. NO.	FED. AID DIST. NO.	FED. AID DATE	FED. AID PERCENT
		380E2	5

DIVISION JOB NO. 7176

REVISED 9-8-42
REVISED 8-22-41

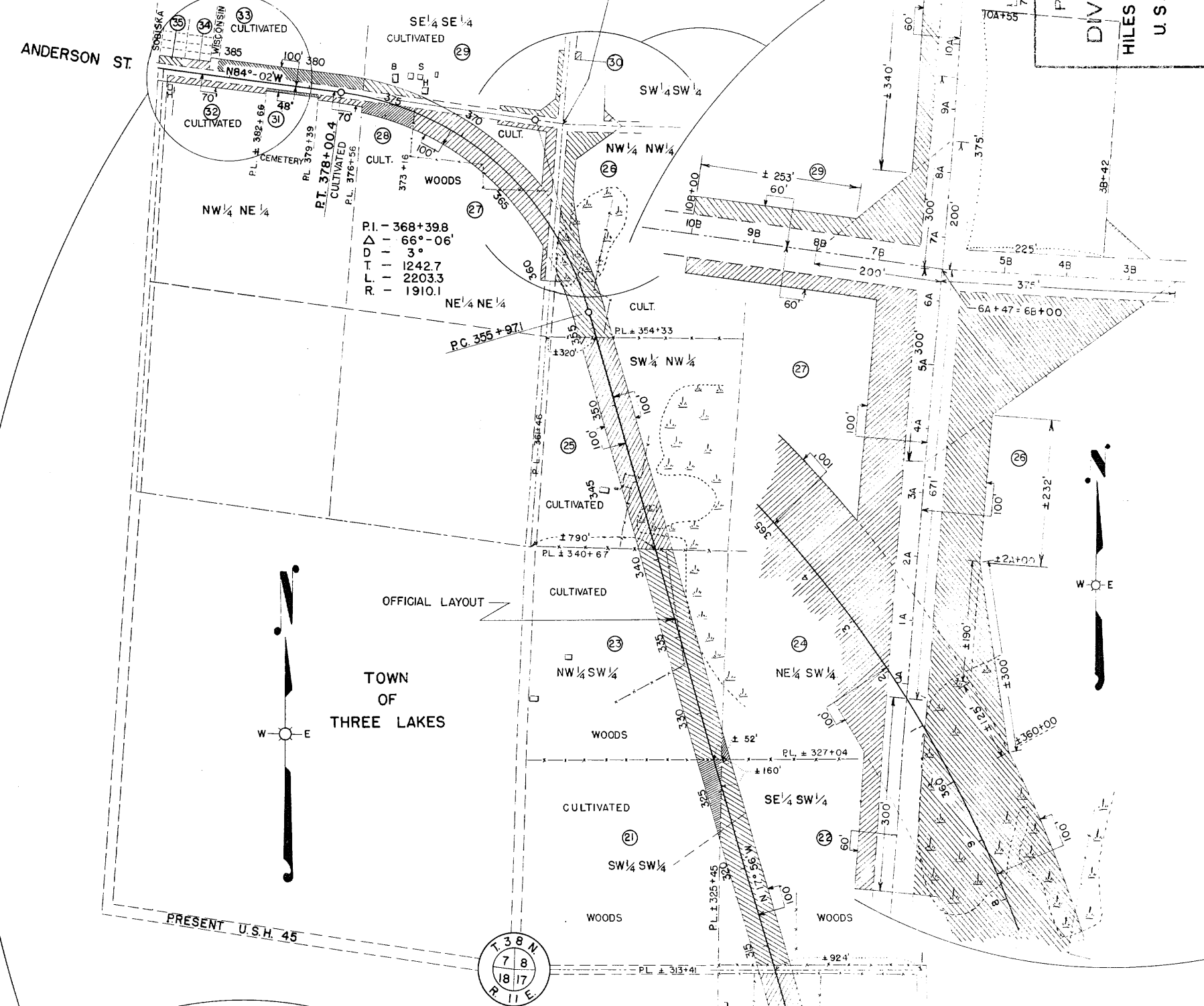
PLAT OF RIGHT OF WAY REQUIRED
DIVISION JOB NO. 7176
HILES JCT. - THREE LAKES ROAD
ONEIDA COUNTY



THREE LAKES

GOV. LOT 4

ANDERSON ST.



PI - 368+39.8
Δ - 66°-06'
D - 3'
T - 1242.7
L - 2203.3
R - 1910.1

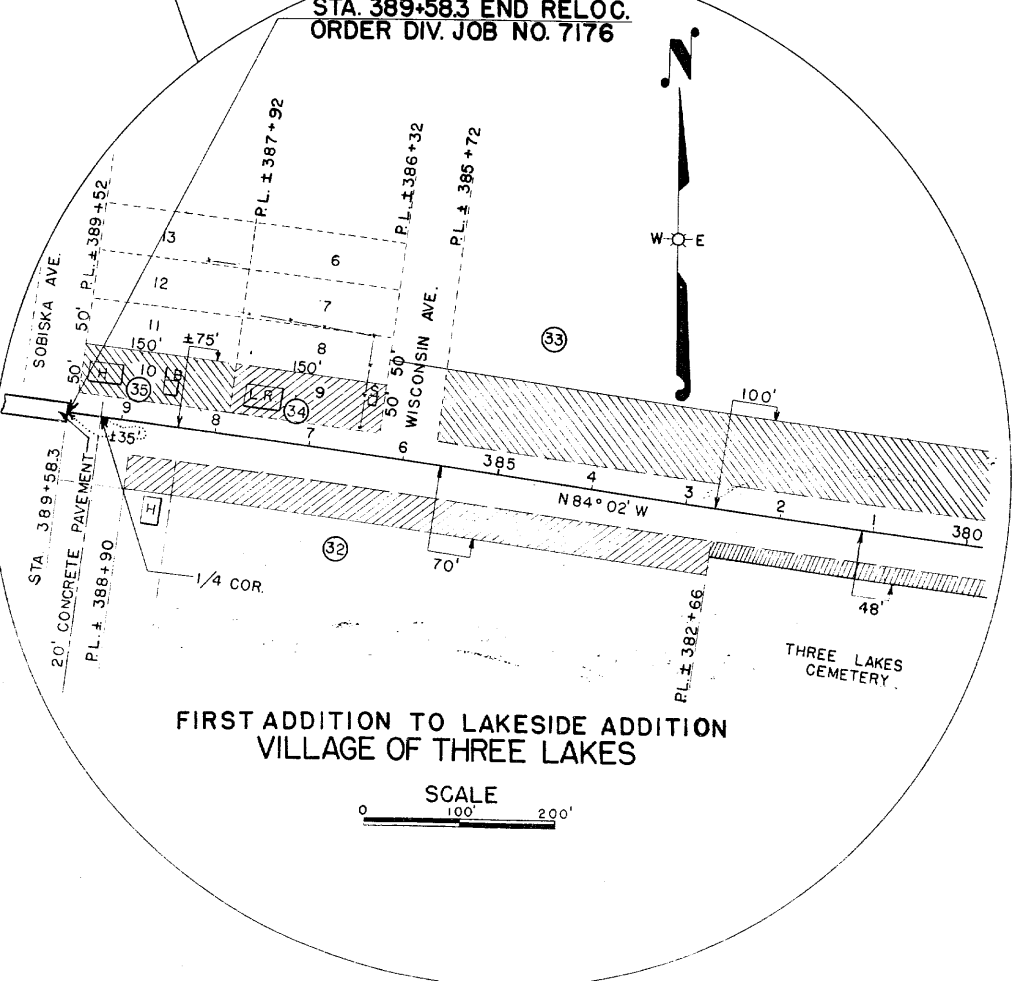
P.C. 355+97.1

OFFICIAL LAYOUT

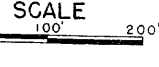
TOWN OF THREE LAKES

PRESENT U.S.H. 45

STA. 389+58.3 END RELOC.
ORDER DIV. JOB NO. 7176



FIRST ADDITION TO LAKESIDE ADDITION VILLAGE OF THREE LAKES



PI - 276+60.7
Δ - 15° 27' LT.
D - 1° 00'
T - 777.3
L - 1545.0
R - 5729.6

P.T. 284+28.4

P.C. 268+83.4

