

MAP # A0705

DATE FILED JUN 17 1994

BY JB

DESCRIPTION FILED

ONEIDA CO. SURVEYOR'S OFFICE

# SURVEY FOR DAVID SCHMITZ

Being the NE 1/4 SE 1/4, Section 21, T.37N. R.8E.  
ONEIDA COUNTY, WIS.

## LEGEND

- G.L.O. Section Control Monuments
- Set 1 1/2" x 24" Iron Pipes
- Centerline
- Boundary Line of 40, Cut out Only

Scale: 1" = 300'  
Bearings from Oneida County  
Targets on South Side of Section.



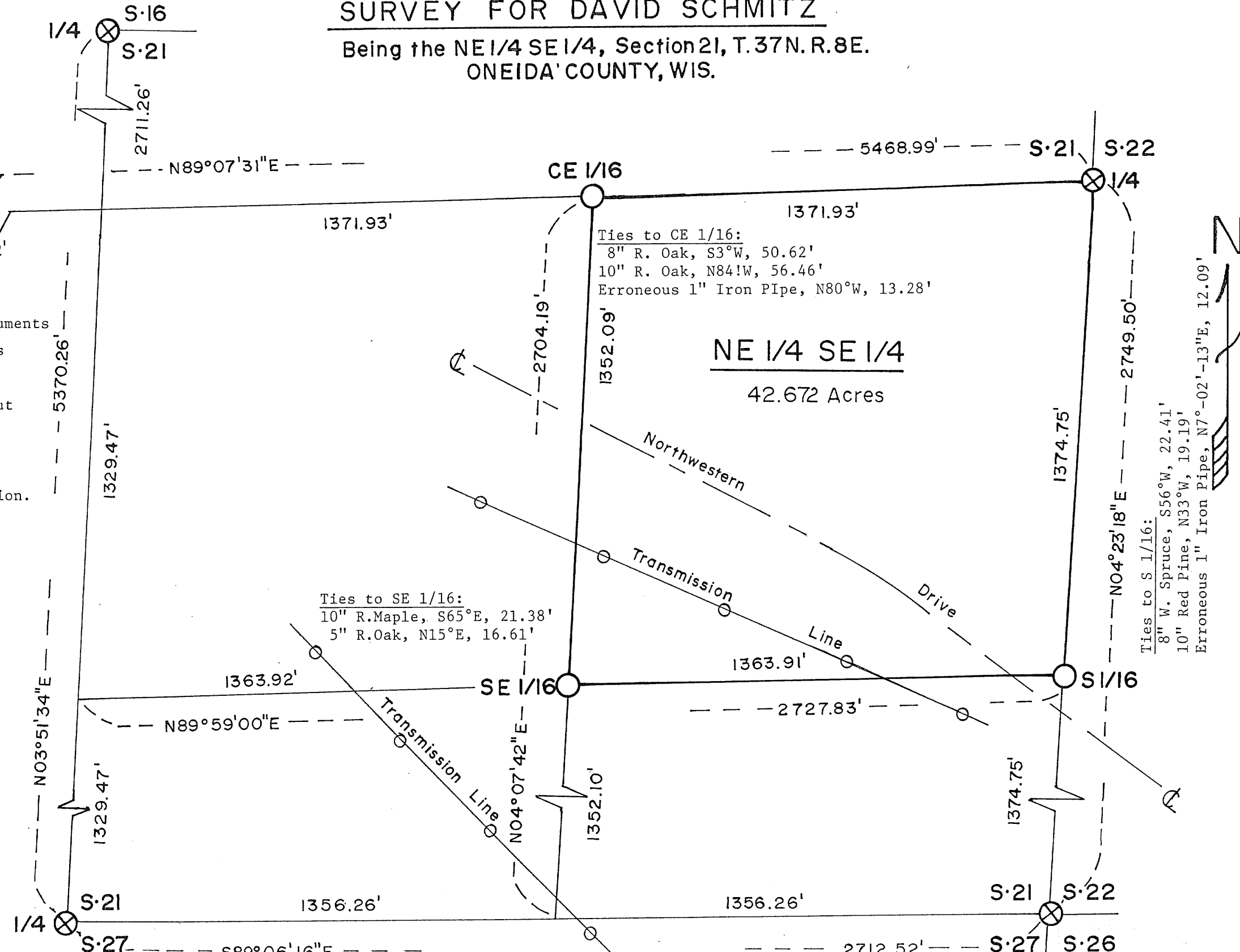
STEFAN SURVEYORS

By: MES

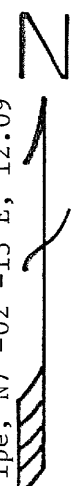
Date: 5/23/94

**SURVEYORS AFFIDAVIT:** I, Milo E. Stefan, RLS #1558, a licensed Land Surveyor in the State of Wisconsin and at the request of David Schmitz have subdivided Section 21, T37N., R8E. and have placed the subdivision corners to the NE 1/4 SE 1/4 and have cut out the boundaries to said 40. I hereby certify that this Plat Map is a true and correct representation of the lands surveyed, monuments found and set to the best of my ability.

Milo E Stefan Milo E. Stefan, RLS #1558 5/23/1994 Date



Ties to S 1/16:  
8" W. Spruce, S56°W, 22.41'  
10" Red Pine, N33°W, 19.19'  
Erroneous 1" Iron Pipe, N7°-02'-13"E, 12.09'



A0705

A0705