

# SURVEY FOR RAYMOND & BETTY OLSON

Being LOT 6 of Plat for Zahn-Kelly-Jewell Lots

## LEGEND

- - Found Iron Pipes - Lot Corners
- - Set Lot Corners
- ⊕ - Center Line
- ⑥ - Lot Number
- (xx) - Distances from Zahn-Kelly-Jewell Plat - Filed May 24, 1927

SCALE: 1" = 40'  
Bearings Assumed



### Surveyors Affidavit:

I, Milo E. Stefan, RLS #1558, a licensed Land Surveyor in the State of Wisconsin, and at the request of Raymond and Betty Olson, have restored the corners to Lot 6 of the Zahn-Kelly-Jewell Plat. This Plat Map is a true and correct representation of the land surveyed to the best of my ability.

*Milo E. Stefan* 6/13/1994  
Milo E. Stefan Date  
RLS #1558

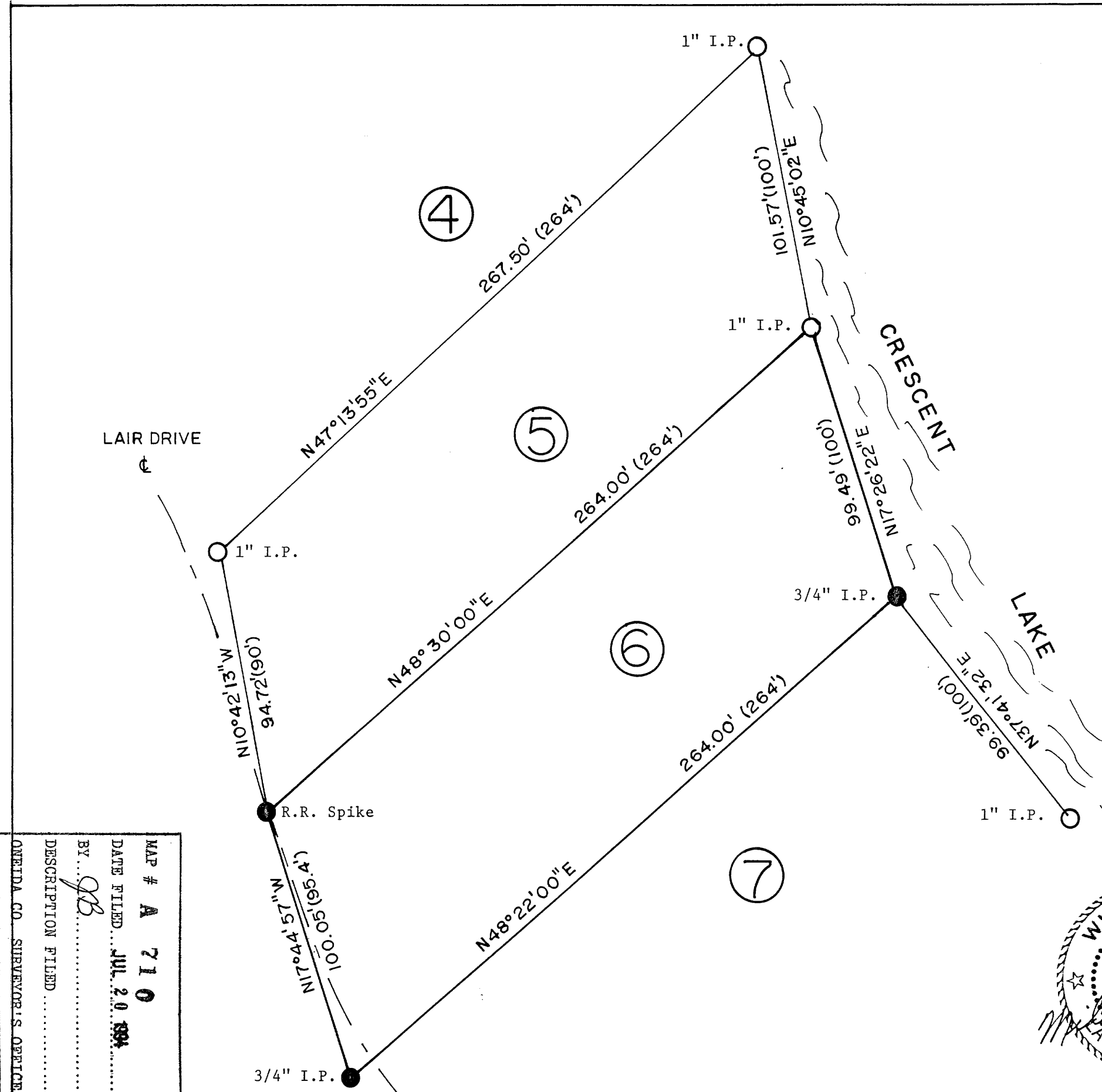
REVISED 7/15/94 To "COMPLETE LEGEND"



STEFAN SURVEYORS

By: *MES*

Date: 6/13/94



MAP # A 710  
 DATE FILED... JUL 20 1994  
 BY... *gb*  
 DESCRIPTION FILED  
 ONEIDA CO. SURVEYOR'S OFFICE