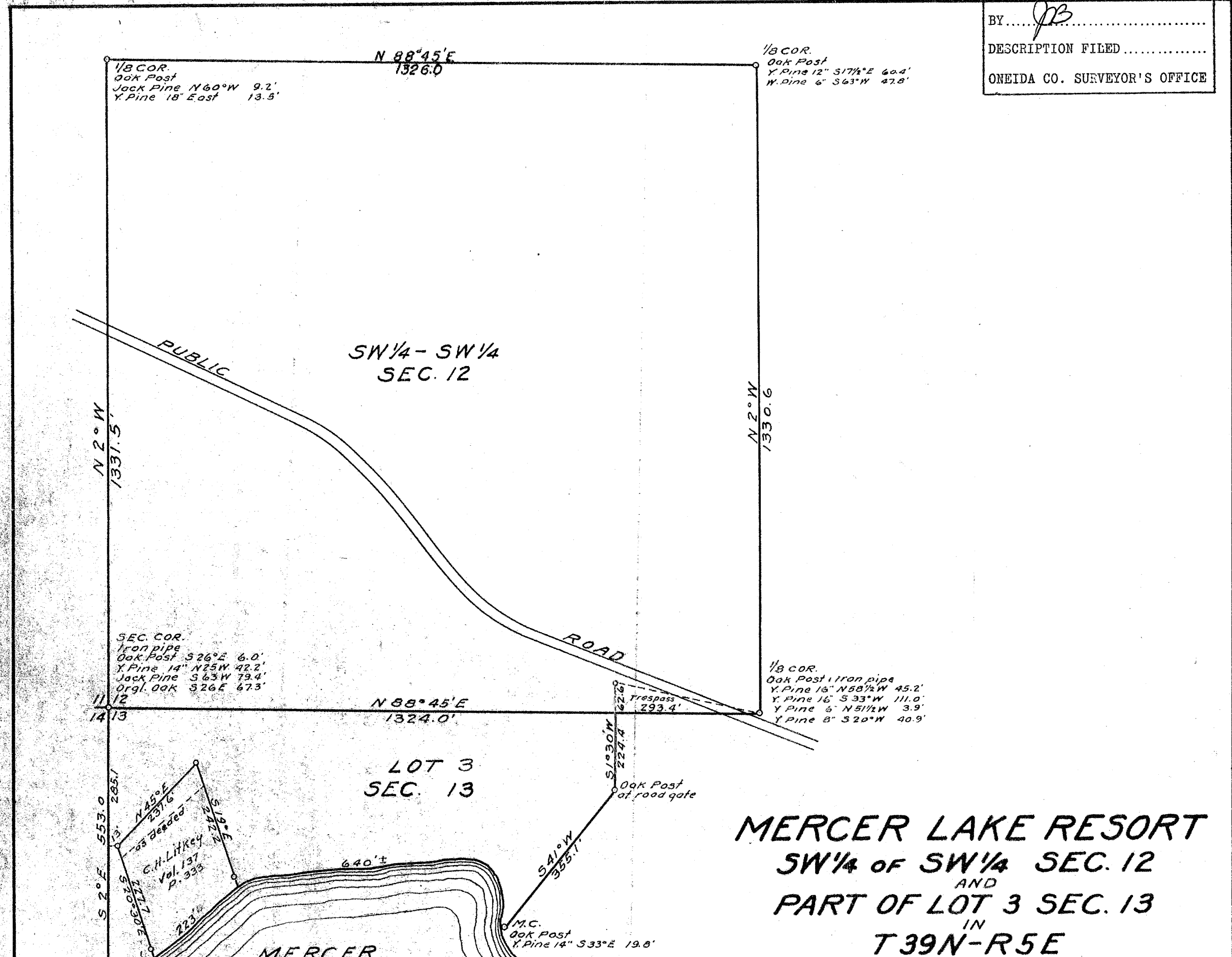
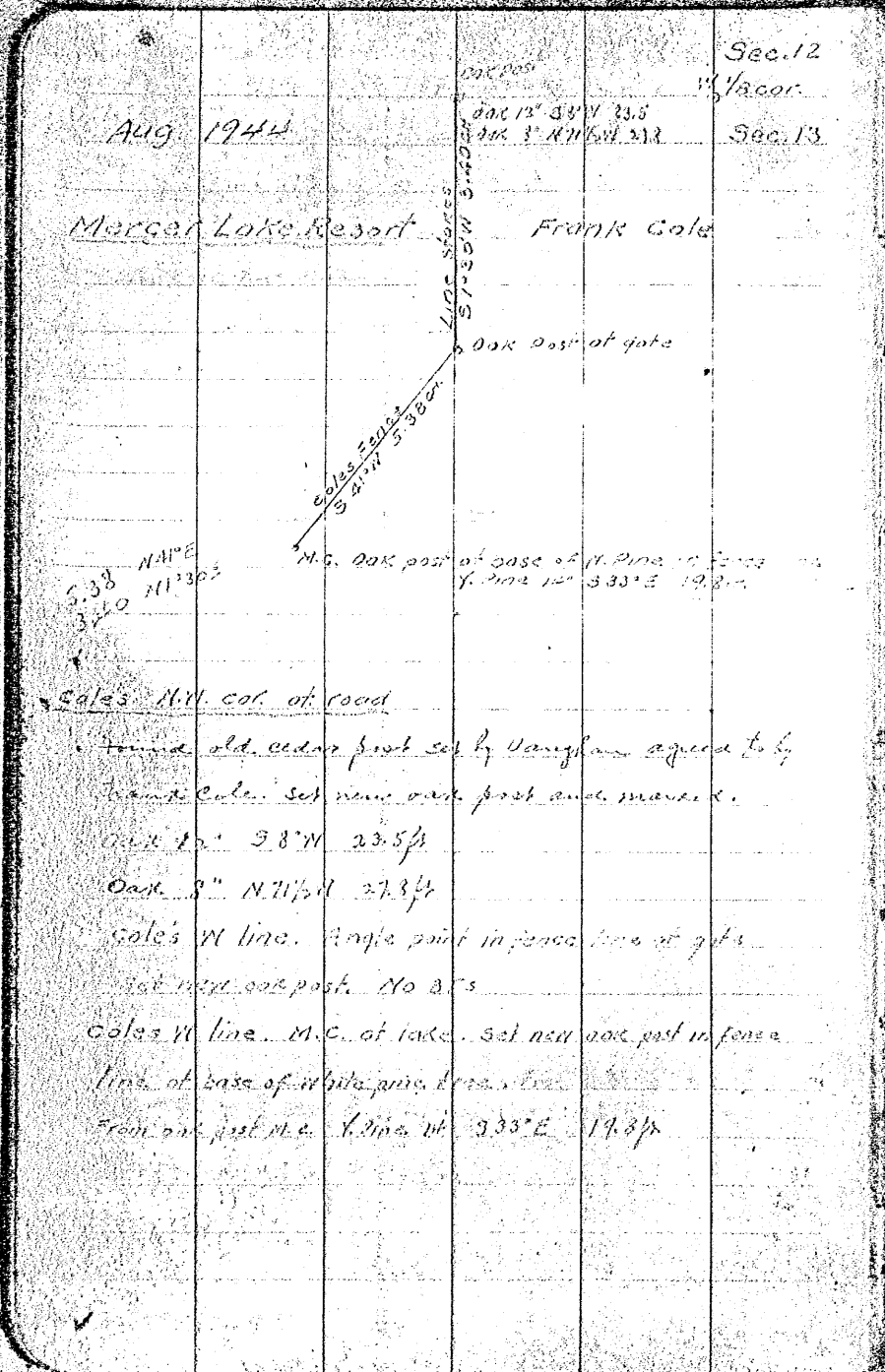


MAP # A 714  
DATE FILED.....AUG. 05. 1994.....  
BY.....JB.....  
DESCRIPTION FILED.....  
ONEIDA CO. SURVEYOR'S OFFICE





Aug 1944

Mercer Lake Resort Frank Cole

Sec. 12  
1/4 cor.  
Sec. 13

M.C. Oak post at base of W. Pine tree  
Y. Pine tree 333° E 19.2 ft

Sales N.W. cor. of road  
Found old cedar post set by Vaughan agreed to by Frank Cole. Set new oak post and marker.  
Oak 12° 58' N 23.5 ft  
Oak 3° N 71° W 27.3 ft  
Coles N line. Angle point in fence line at gate.  
Set new oak post. No B.T.S.  
Coles W line. M.C. at lake. Set new oak post in fence line at base of W. Pine tree.  
Found oak post M.C. W. Pine tree 333° E 19.2 ft

T39N-R5E (Mercer Lake)  
Dec. 12 and 13 (Resort)

1/4 cor. between Sec. 12 & 13 found old W. Vaughan bearing line of Pine tree N 53 1/2° W 1.68 1/2 US 2' is in good condition marks plain but almost grown over this of Pine 333° W 1.68 1/2 ft. to back tunnel on one side facing almost closed. Near these trees located iron pipe under road allowing 2' to 3' westward movement of needle in 1770 time and measured road distance. Set oak post at iron pipe and measured:  
to Pine 1' 5 20' N 3.7 ft  
to Pine 2' 5 20' N 40.7

Cor. Sec. 11, 12, 13, 14  
Set Vaughan's oak 4.5' x 31 zone (unmarked)  
Set iron pipe in road intersection from Stake of Cole facing better & further on road but some pipe to age of Pine, Oak stake is 3 2 1/2' x 1.27' from pipe  
4. Pine (Bennett) bears N 25° W 1.68 ft  
4. Pine (Bennett) bears 333° W 1.20 ft  
Set oak post 6 ft. 5 20' E on line with oak post at 1/4 cor. between Sec. 11 & 12. Found no stake or B.T.S. concluded as I did in 1937 & assume telephone pole set in 1937. Set oak post in E of old road and 5 ft. 3 20' W (direction for 30 yrs. 5 ft) from better st. supposedly oak distance N. Pine 3rd cor. 40.215 ft  
near B.T.S. of Pine tree N 53° W 26.1 ft  
W. Pine tree N 20° W 35.6 ft



K.S. Book # 2

T 39N-R 5E Sec. 12 and 13 (Mercer Lake) Resort

$\frac{5}{8}$  cor between Sec. 11 and 12

Found no stake for 8.13. Sub. Oak post on line

Between Sec. 12 & 13. 40.215; 1331.55 ft

and marked. Gage Point. N 60° W 7.7 ft

G. Point East 13.5 ft.

M.C. between Sec. 13 & 14 N. side Mercer Lake

500 ft of Sec. 11, 12, 13, 14. Estimated line bet Sec. 11 & 12

300 ft for 2.3 a distance of 3.38 ch. to shore of

main lake and set Cor. post for M.C.

From corner S. 6° 54' E. 1.4 ft

Cor. 3' N 51° E 25.1 ft

no stake found on previous post nor any other line bet

near corner. Set in old fence line from actual

survey precisely rechecked in Sch. 137 on page 333

Begin <sup>at Oak P. 12</sup> on N. shore Mercer Lake 100 ft Ely from M.C.

Between Sec. 13 & 14. Sk N 20° 30' W (100.0') 3.45 (227.7 ft)

To corner post in old fence corner. Hence N 45° E

3.60 ch. (237.6 ft) to corner post in fence line

Hence S 19° E. along fence. 3.67 ch. (242.3 ft) to corner

post at shore of Mercer Lake. Hence S 11° E. along

to fence. 13 1/2 Rods (233 ft) to corner post at shore of Mercer Lake