

MAP # A 731
 DATE FILED JUN 07 1995
 BY *J.B.*
 DESCRIPTION FILED
 ONEIDA CO. SURVEYOR'S OFFICE

LAUREL LAKE

SW 1/4 SW 1/4
 SEC 34
 T39N R11E
 U.S.A.

Curve Data
 $\Delta = 108^\circ 03' Lt.$
 R = 65'
 T = 89.5'
 E = 46.3'
 L = 122.6'

Curve Data
 $\Delta = 112^\circ 00' Lt.$
 R = 50'
 T = 74.5'
 E = 39.5'
 L = 98.0'

GOVT LOT 9
 SEC 3
 T38N R11E
 U.S.A.

P.I. 0+88.5

N 2° 49' E

Right of Way Limits

Right of Way Limits

P.T. 3+59.4

P.C. 0+140.0
 P.O.B. 0+00

P.O.E. 4+01.4

TOWN of
 THREE LAKES
 RIGHT of WAY
 (66')

N 87° 30' W

N 88° 30' W

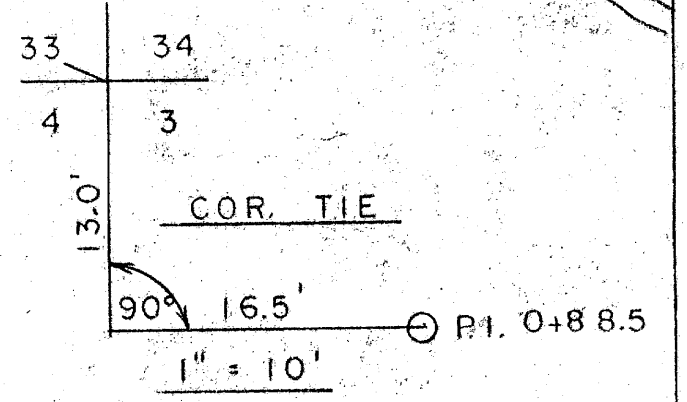
S 88° 00' W

Robert & Jacqueline D.
 Conquest

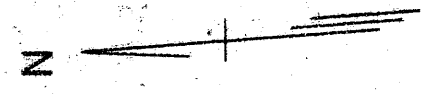
Victor W. & Ella W. Conquest

GOVT LOT 8
 SEC 4
 T38N R11E
 (PRIVATE)

GOVT LOT 4
 SEC 33
 T39N R11E



RIGHT OF WAY
 E.R. 2100-AA
 MEDICINE LAKE ROAD
 NICOLET NATIONAL FOREST
 Drawn by FLANCHER
 Scale = 1" = 40'



LAUREL LAKE

SW 1/4 SW 1/4
SEC 34
T39N R11E
U.S.A.

GOVT LOT 9
SEC 3
T38N R11E
USA

Curve Data
Δ = 108° 03' Lt.
R = 65'
T = 89.5'
E = 46.3'
L = 122.6'
P.I. 3+26.3

Curve Data
Δ = 112° 00' Lt.
R = 50'
T = 74.5'
E = 39.5'
L = 98.0'

125' N 2° 49' E

150'

Right of Way Limits

Right of Way Limits

P.T. 3+59.4

P.C. 0+140.0
P.O.B. 0+00

P.O.E. 4+01.4

TOWN of
THREE LAKES
RIGHT of WAY
(66')

N 87° 30' W

N 88° 30' W

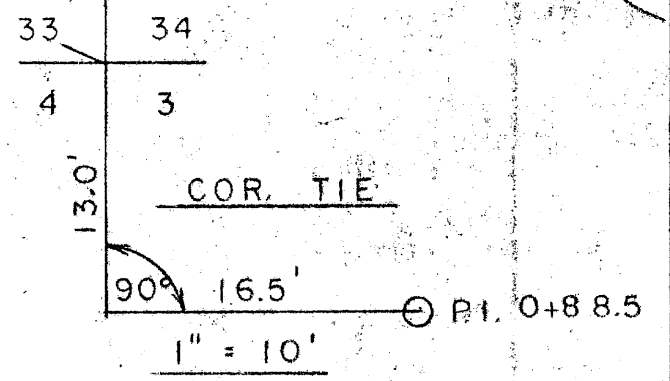
S 88° 00' W

Robert & Jacqueline D.
Conquest

Victor W. & Ella W. Conquest

GOVT LOT 8
SEC 4
T38N R11E.
(PRIVATE)

GOVT LOT 4
SEC 33
T39N R11E



RIGHT OF WAY
FR 2100-AA
MEDICINE LAKE ROAD
NICOLET NATIONAL FOREST

Drawn by FLANCHER
Scale = 1" = 40'

