

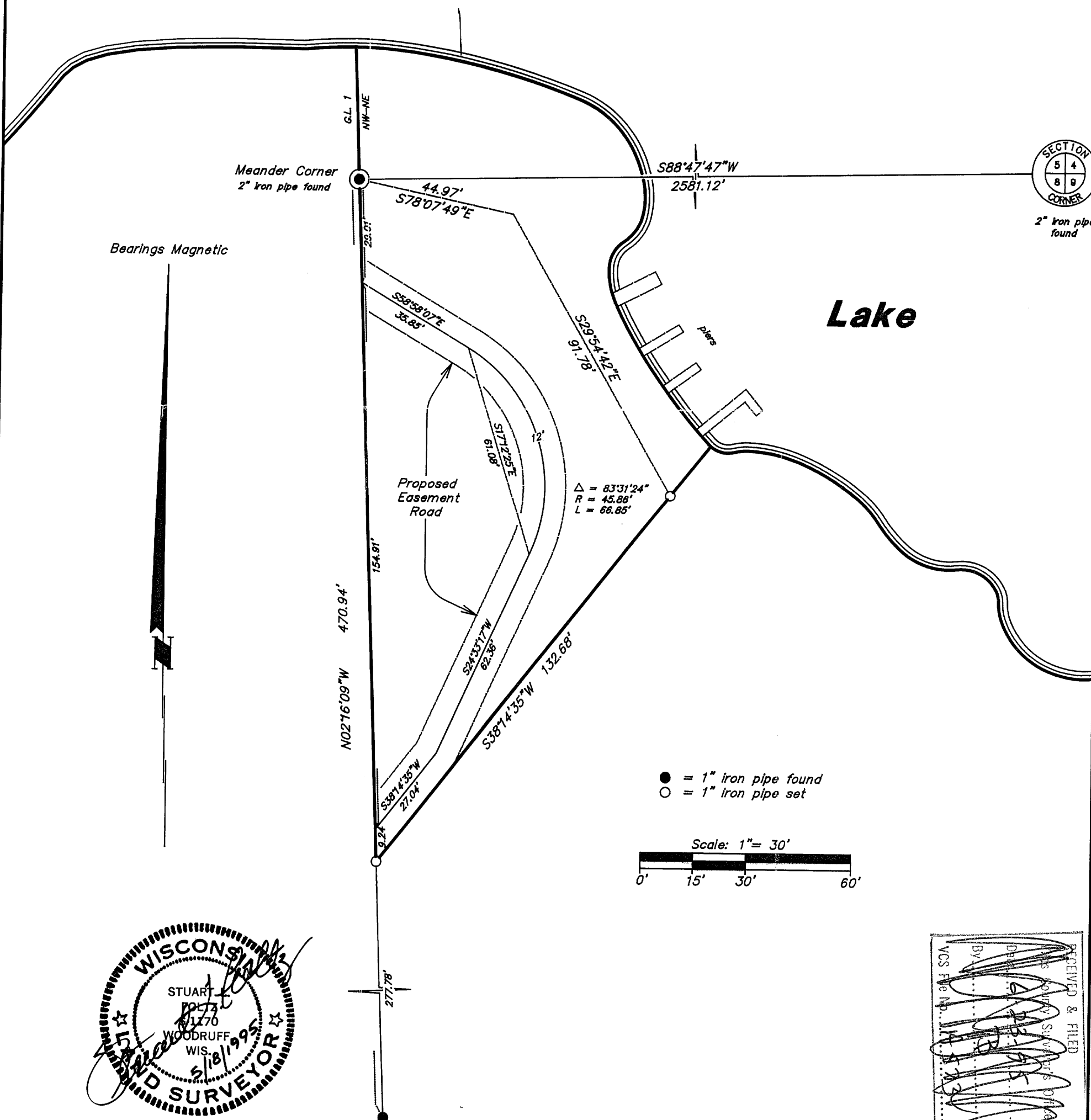
A 0 7 3 6

MAP #  
DATE FILED JUL 14 1995  
BY *JB*  
DESCRIPTION FILED  
ONEIDA CO. SURVEYOR'S OFFICE

# Part of the NW1/4 of the NE1/4 SECTION 8, T39N, R8E

Town of Newbold  
Oneida County, Wisconsin

## Pickerel



WISCONSIN  
STUART  
POLY  
1170  
WOODRUFF  
WIS.  
5/18/1995  
SURVEYOR

RECEIVED & FILED  
MRS. JANE S. WOODRUFF  
ONEIDA COUNTY SURVEYOR  
BY *[Signature]*  
VCS FILE NO. 1170

I hereby certify that this survey and the above map were made in accordance with acceptable professional standards and that the information contained thereon is, to the best of my knowledge, information and belief, a true and accurate representation thereof.  
Any legal descriptions conforming to this survey have been provided on separate sheets.  
The above survey was made by order of Jack Radue.

**Foltz and Associates, Inc.**  
Surveyors Architects Engineers  
8612 Highway 51 North, Minocqua, Wisconsin 54548  
(715) 356-8485 fax (715) 356-1841

A 0 7 3 6

A 0 7 3 6