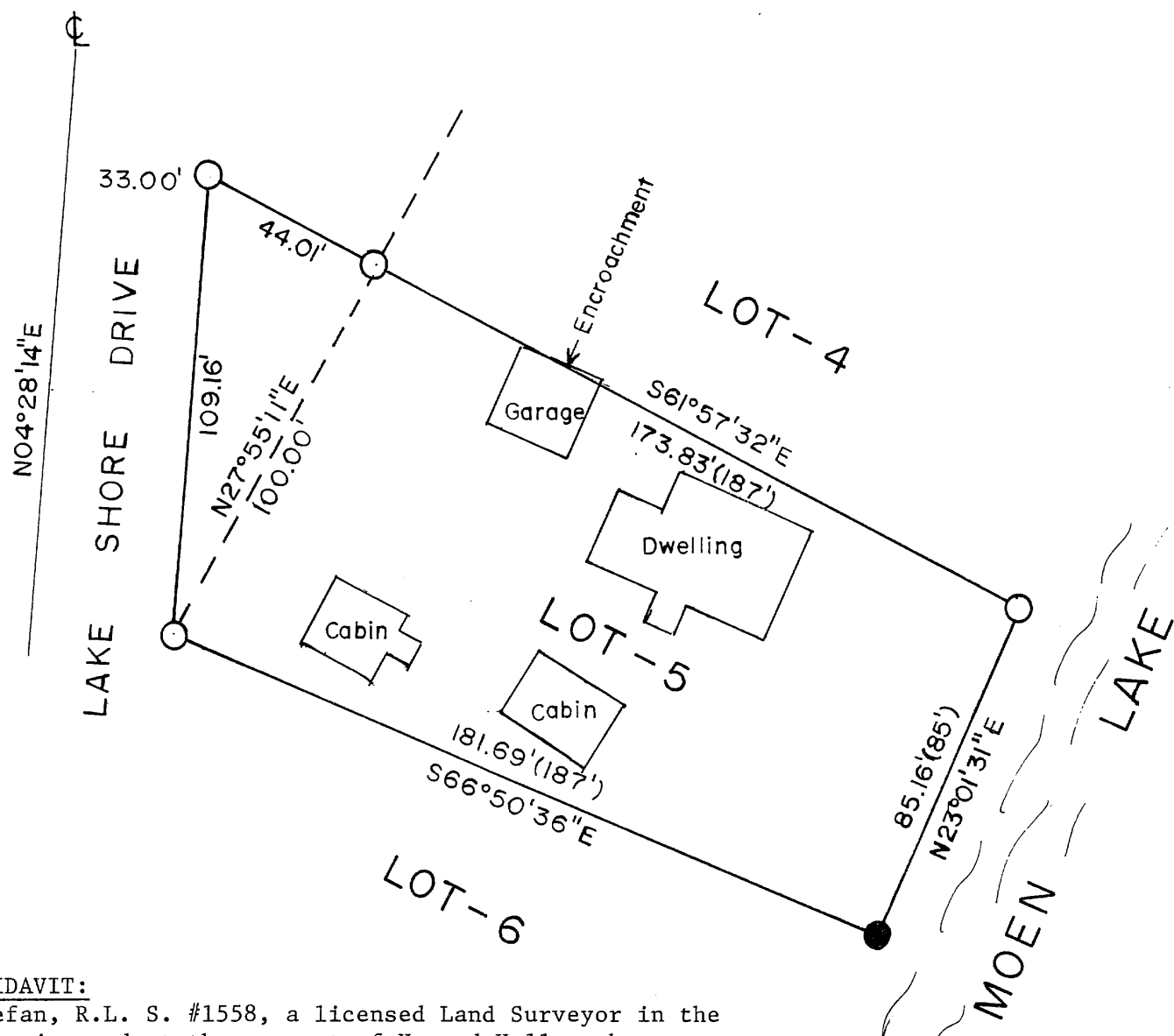


# SURVEY FOR HOWARD KELLER

BEING LOT 5, MOEN PARK, SECOND EDITION - ONEIDA COUNTY, WISCONSIN

MAP # A 743  
 DATE FILED NOV 09 1995  
 BY JB  
 DESCRIPTION FILED  
 ONEIDA CO. SURVEYOR'S OFFICE



## LEGEND

- - Corners Found
- - Corners Set
- ⊕ - Road Centerline

SCALE: 1" = 40'



### SURVEYORS AFFIDAVIT:

I, Milo E. Stefan, R.L. S. #1558, a licensed Land Surveyor in the State of Wisconsin, and at the request of Howard Keller, have located the limits of Lot 5 of the Plat of Moen Park and have set the exterior corners of said lot to the best of my abilities, and that this Plat Map is a true and correct representation of the lands surveyed.

Milo E. Stefan      10/13/1995  
 Milo E. Stefan, R.L.S. #1558      Date

STEFAN SURVEYORS  
 By: MES  
 Date: 10/13/95