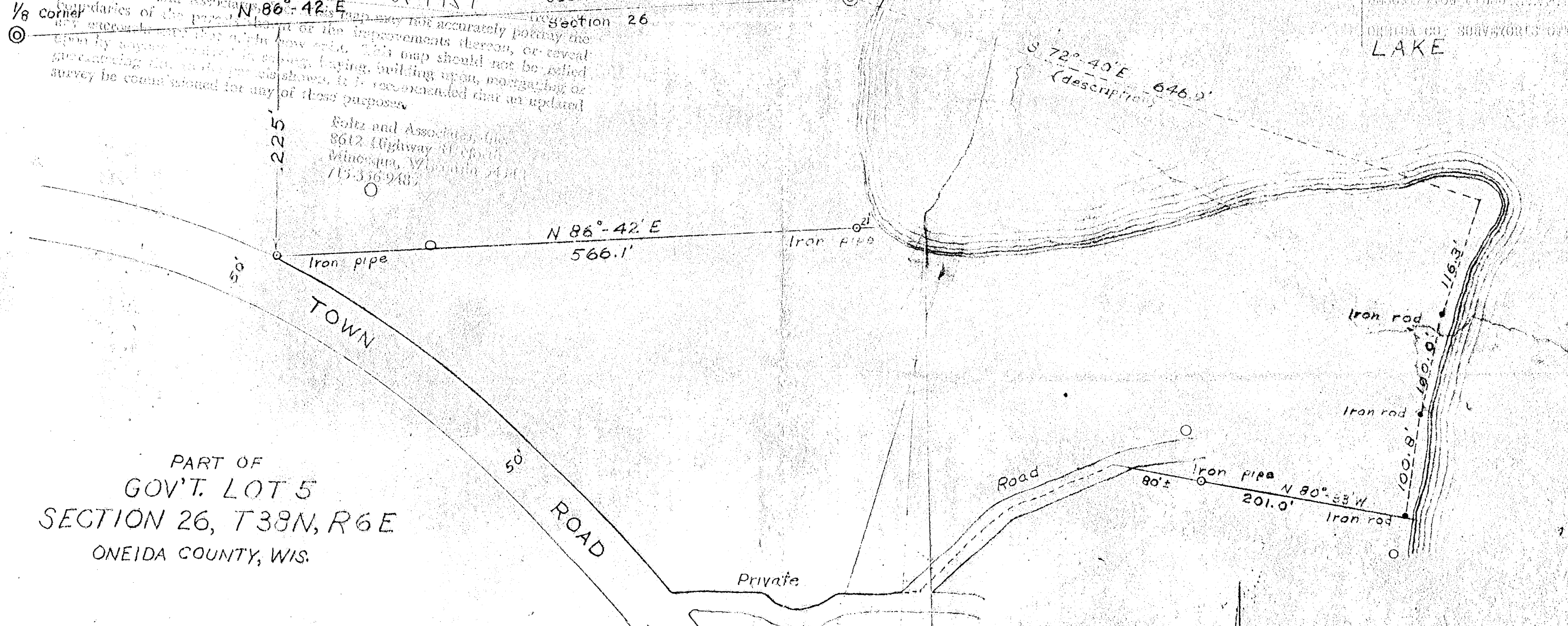


A0750

MAP # A0750
 DATE FILED... JAN. 13, 1960
 BY...
 DESCRIPTION FILED...
 ONEIDA CO. SURVEYORS OFFICE
 LAKE

This map is a copy of a survey dated **Oct 1959** section 23
 files of Foltz and Associates, Inc. section 26
 boundaries of the property. This map may not accurately portray the
 any easements, or the improvements thereon, or reveal
 errors by anyone relying on this map should not be relied
 upon for any purpose, including laying, building upon, mortgaging or
 purchasing real estate. It is recommended that an updated
 survey be commissioned for any of these purposes.

Foltz and Associates, Inc.
 8612 Highway 14 South
 Minocqua, Wisconsin 54871
 715.336.9487



PART OF
 GOV'T. LOT 5
 SECTION 26, T38N, R6E
 ONEIDA COUNTY, WIS.

Scale: 1"=100'
 October, 1959



Northwoods Surveyors
 William S. Cameron
 reg. surveyor



A0750

J. Griffin