

# SURVEY FOR RAYMOND SACKETT

BEING LOTS 6, 7 & 8 OF THE SHAW & DORR CUTLOTS PLAT IN THE SW $\frac{1}{4}$  SW $\frac{1}{4}$  SECTION 8, TOWNSHIP 36 NORTH, RANGE 9 EAST OF ONEIDA COUNTY, WISCONSIN

MAP # **A0758**  
 DATE FILED... **MAY 24 1996**  
 BY... *JB*  
 DESCRIPTION FILED.....  
 ONEIDA CO. SURVEYOR'S OFFICE

### LEGEND

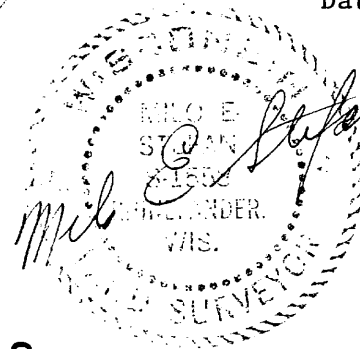
- ⊗ - Found GLO Corners
- - Set 1 1/4" Iron Pipes
- (XXX) - Distances from Shaw & Dorr Plat

BEARINGS ASSUMED  
 SCALE: 1" = 200'

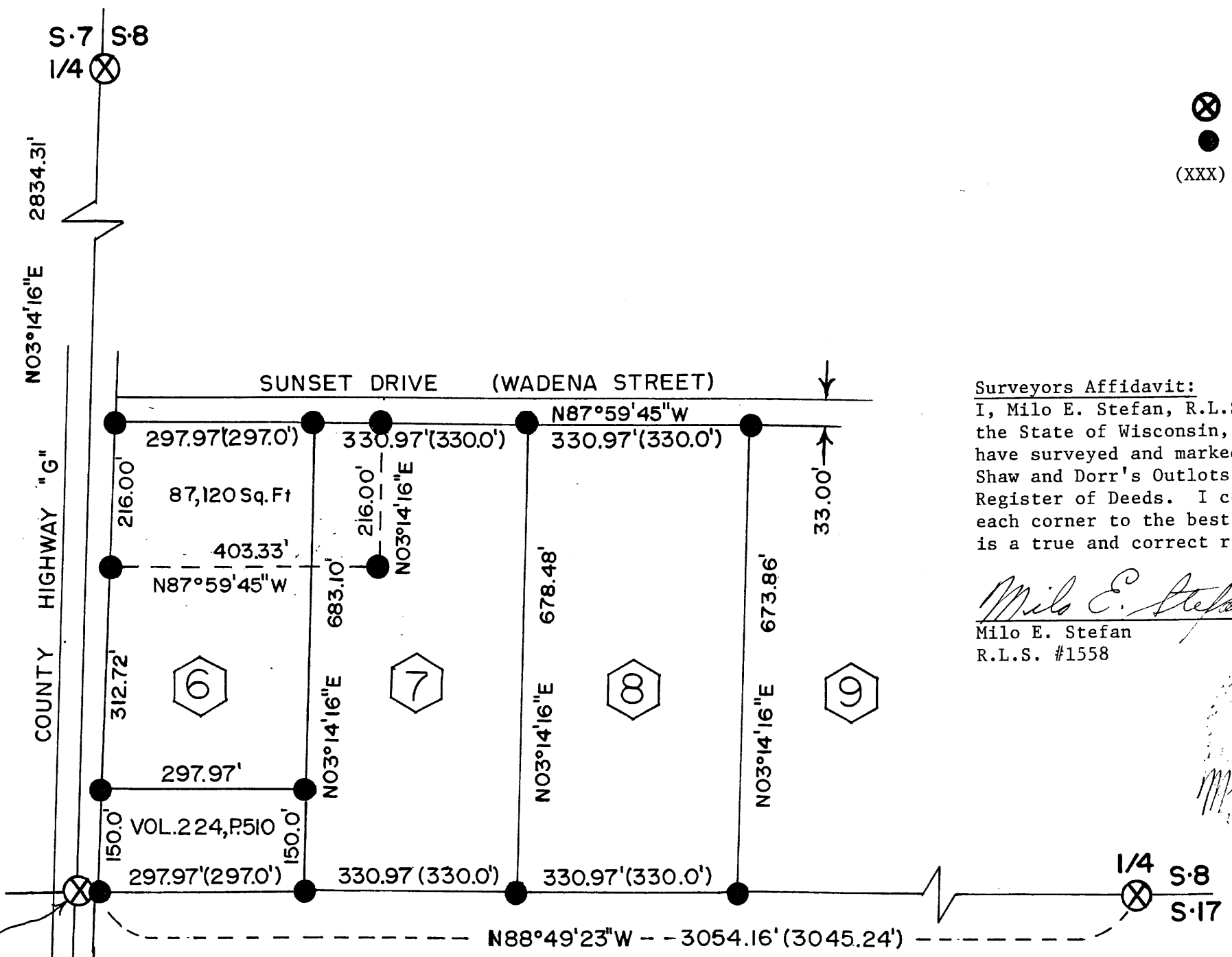


**Surveyors Affidavit:**  
 I, Milo E. Stefan, R.L.S. #1558, a licensed Land Surveyor in the State of Wisconsin, and at the request of Raymond Sackett have surveyed and marked the corners to Lots 6, 7 & 8 of the Shaw and Dorr's Outlots Plat as recorded in the Oneida County Register of Deeds. I certify that I have surveyed and marked each corner to the best of my abilities and that this Plat Map is a true and correct representation of the lands surveyed.

*Milo E. Stefan* \_\_\_\_\_ 5/8/1996  
 Milo E. Stefan Date  
 R.L.S. #1558



*See revised Map # A760 M.E.S. 6/21/96*



S-7 | S-8  
 S-18 | S-17

1/4 S-8  
 S-17

**STEFAN SURVEYORS**

By: *M.E.S.* Date: 5/8/96