

SURVEY FOR THE TOWN OF NEWBOLD, WISCONSIN

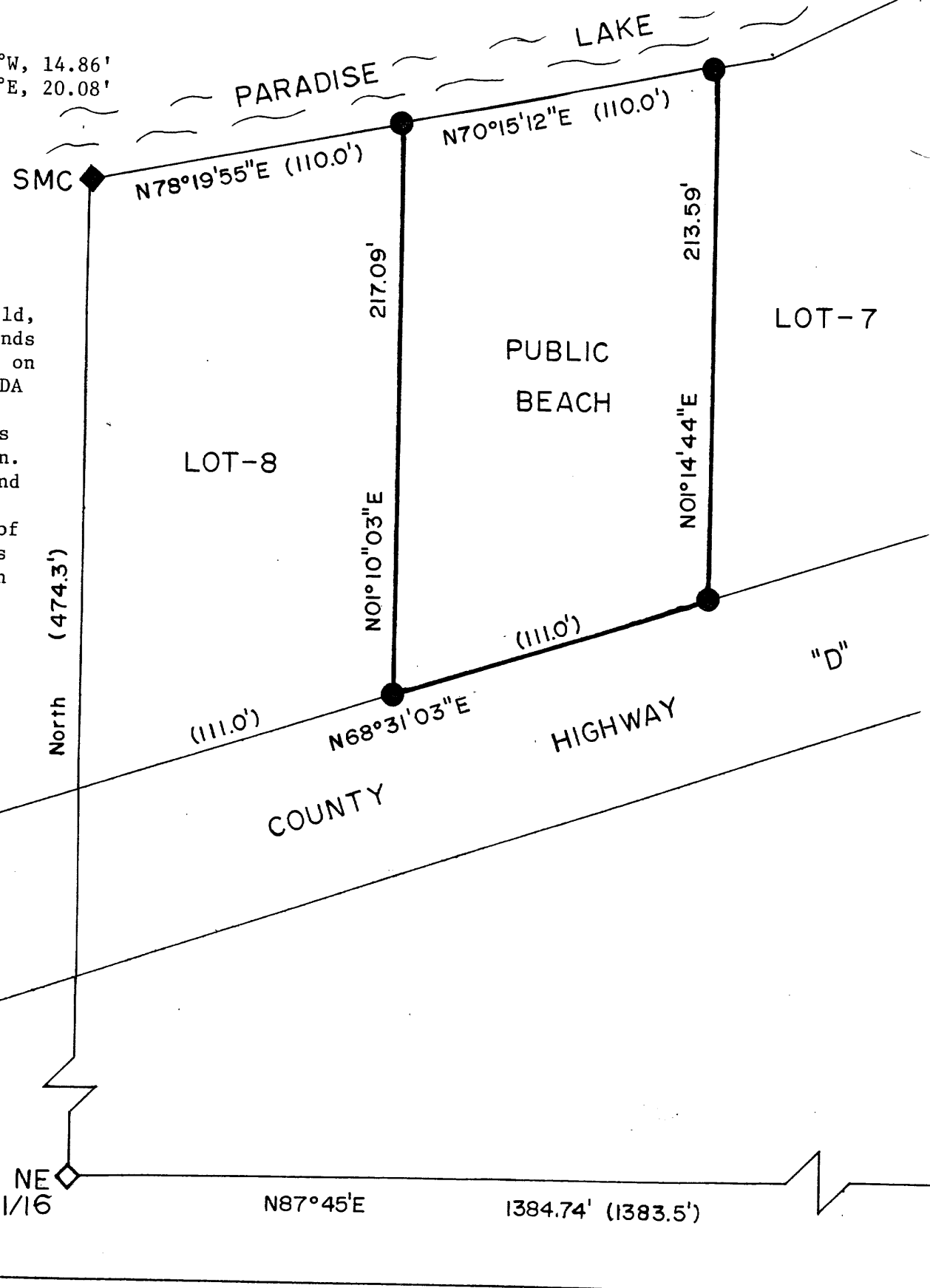
BTs to S.M.C.
12" Red Pine, S86°W, 14.86'
14" Red Pine, S48°E, 20.08'

SURVEYORS AFFIDAVIT:
I, Milo E. Stefan, R.L.S. #1558, a licensed Land Surveyor in the State of Wisconsin, and at the request of the Township of Newbold, have surveyed and marked the bounds of a "Public Beach" as indicated on the recorded Plat known as DONELDA PLAY GROUND'S. This Plat is recorded in the Register of Deeds Office in Oneida County Wisconsin. I certify that I have surveyed and marked the corners and bounds of said "Public Beach" to the best of my abilities and this Plat Map is a true and correct representation of the lands surveyed.

Milo E. Stefan
Milo E. Stefan
R.L.S. #1558
6/18/1996
Dated



BTs to NE 1/16
12" Red Oak, N42°E, 31.69'
6" White Pine, N15°W, 29.00'



LEGEND

- ◊ - Found 6" x 6" Square Concrete Monument (Section Subdivision Corners)
 - ◆ - Set 4" x 24" Round Concrete Monument
 - - Set 1½" x 24" Iron Pipe Lot Corners
 - (XXX) - Distances from Donelda Play Ground's Plat
- Bearings from Plat
SCALE: 1" = 50'



MC
BTs to M.C.
6" White Pine, N82°E, 8.49'
5" Red Oak, S14°E, 24.77'
8" White Pine, S38°W, 36.02'
10" White Pine, S72°W, 4.35'

MAP # A0761
DATE FILED JUN 28 1996
BY *JB*
DESCRIPTION FILED
ONEIDA CO. SURVEYOR'S OFFICE

STEFAN SURVEYORS
By: *MES* Date: 6/18/96