

# SURVEY FOR MARK & KRIS MEINDERS

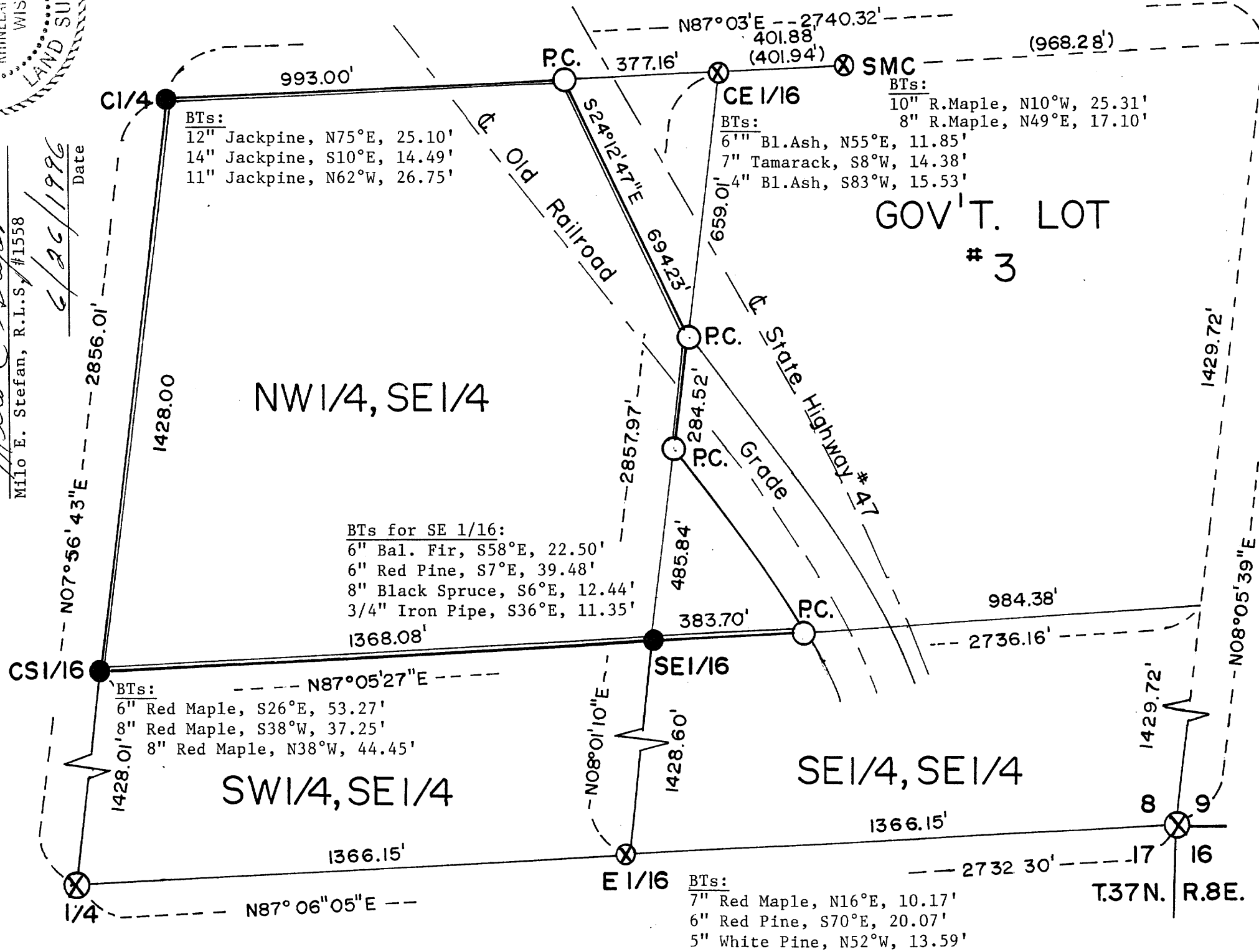
BEING PARTS OF THE NW $\frac{1}{4}$ , SE $\frac{1}{4}$  & GOVERNMENT LOT #3, SECTION 8, TOWNSHIP 37 NORTH, RANGE 8 EAST, ONEIDA COUNTY WISCONSIN

MAP # **A0766**  
 DATE FILED **JUL 19 1996**  
 BY *MS*  
 DESCRIPTION FILED .....  
 ONEIDA CO. SURVEYOR'S OFFICE



**SURVEYORS AFFIDAVIT:**  
 I, Milo E. Stefan, a licensed Land Surveyor in the State of Wisconsin, #1558 and at the request of Al Lis have surveyed and marked the bounds of land currently owned by Mark and Kris Meinders. I certify that I have cleared the boundaries, marked the corners and that this Plat Map is a correct and accurate representation of the lands surveyed to the best of my abilities.

*Milo E. Stefan*  
 Milo E. Stefan, R.L.S. #1558  
 Date 6/26/1996



**BTs:**  
 12" Jackpine, N75°E, 25.10'  
 14" Jackpine, S10°E, 14.49'  
 11" Jackpine, N62°W, 26.75'

**BTs:**  
 10" R.Maple, N10°W, 25.31'  
 8" R.Maple, N49°E, 17.10'  
 6" Bl.Ash, N55°E, 11.85'  
 7" Tamarack, S8°W, 14.38'  
 4" Bl.Ash, S83°W, 15.53'

**BTs for SE 1/16:**  
 6" Bal. Fir, S58°E, 22.50'  
 6" Red Pine, S7°E, 39.48'  
 8" Black Spruce, S6°E, 12.44'  
 3/4" Iron Pipe, S36°E, 11.35'

**BTs:**  
 6" Red Maple, S26°E, 53.27'  
 8" Red Maple, S38°W, 37.25'  
 8" Red Maple, N38°W, 44.45'

**BTs:**  
 7" Red Maple, N16°E, 10.17'  
 6" Red Pine, S70°E, 20.07'  
 5" White Pine, N52°W, 13.59'

- LEGEND**
- ⊗ - Found GLO Corners
  - ⊗ - Found Subdivision Corners/Past Surveys
  - - Set Subdivision Corner 2" x 24" Iron Pipes
  - - Set Property Corners 2" Iron Pipes
  - — — - Property Boundary, Cleared, Blazed and Painted Red

Bearings Assumed  
 SCALE: 1" = 300'



**STEFAN SURVEYORS**  
 By: *MS* Date: 6/26/96