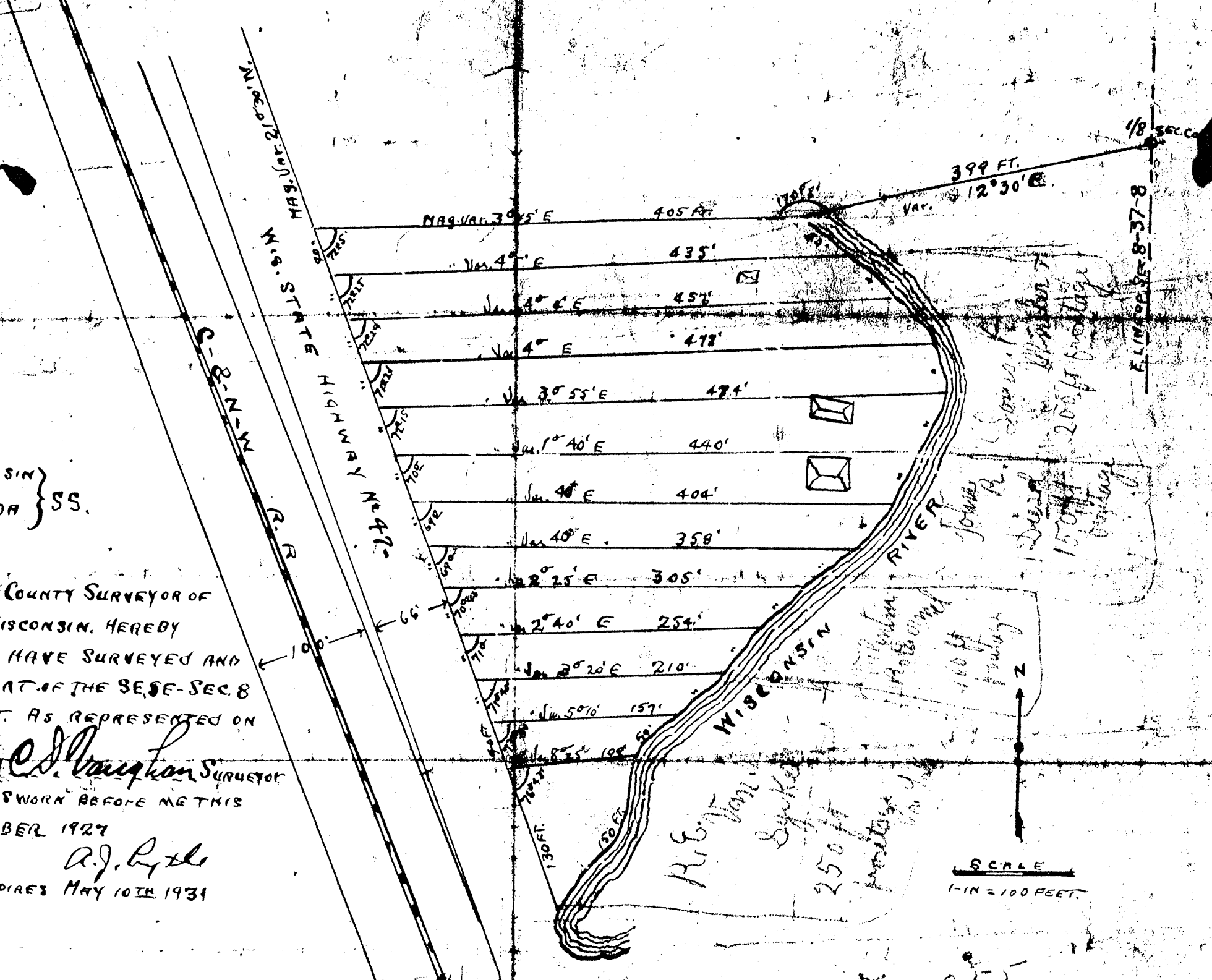


MAP # **A0767**
 DATE FILED **AUG 02 1936**
 BY *J.B.*
 DESCRIPTION FILED
 ONEIDA CO. SURVEYOR'S OFFICE

STATE OF WISCONSIN }
 COUNTY OF ONEIDA } SS.

I, C.D. VAUGHAN, COUNTY SURVEYOR OF ONEIDA COUNTY, WISCONSIN, HEREBY CERTIFY THAT I HAVE SURVEYED AND NAMED THAT PART OF THE SE 1/4 SEC 8 T-57N-R-8E AS REPRESENTED ON THIS MAP.

Signed *C.D. Vaughan* Surveyor
 Subscribed and sworn before me this 7th day of DECEMBER 1927
A.J. By the
 My Commission Expires MAY 10th 1931



72 15 - 255
 70 140
 215 215