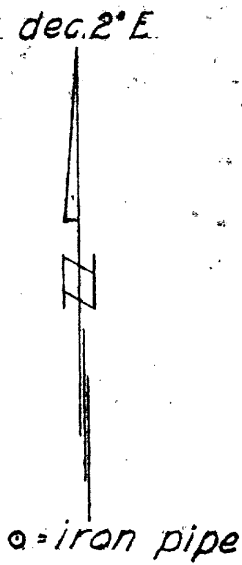
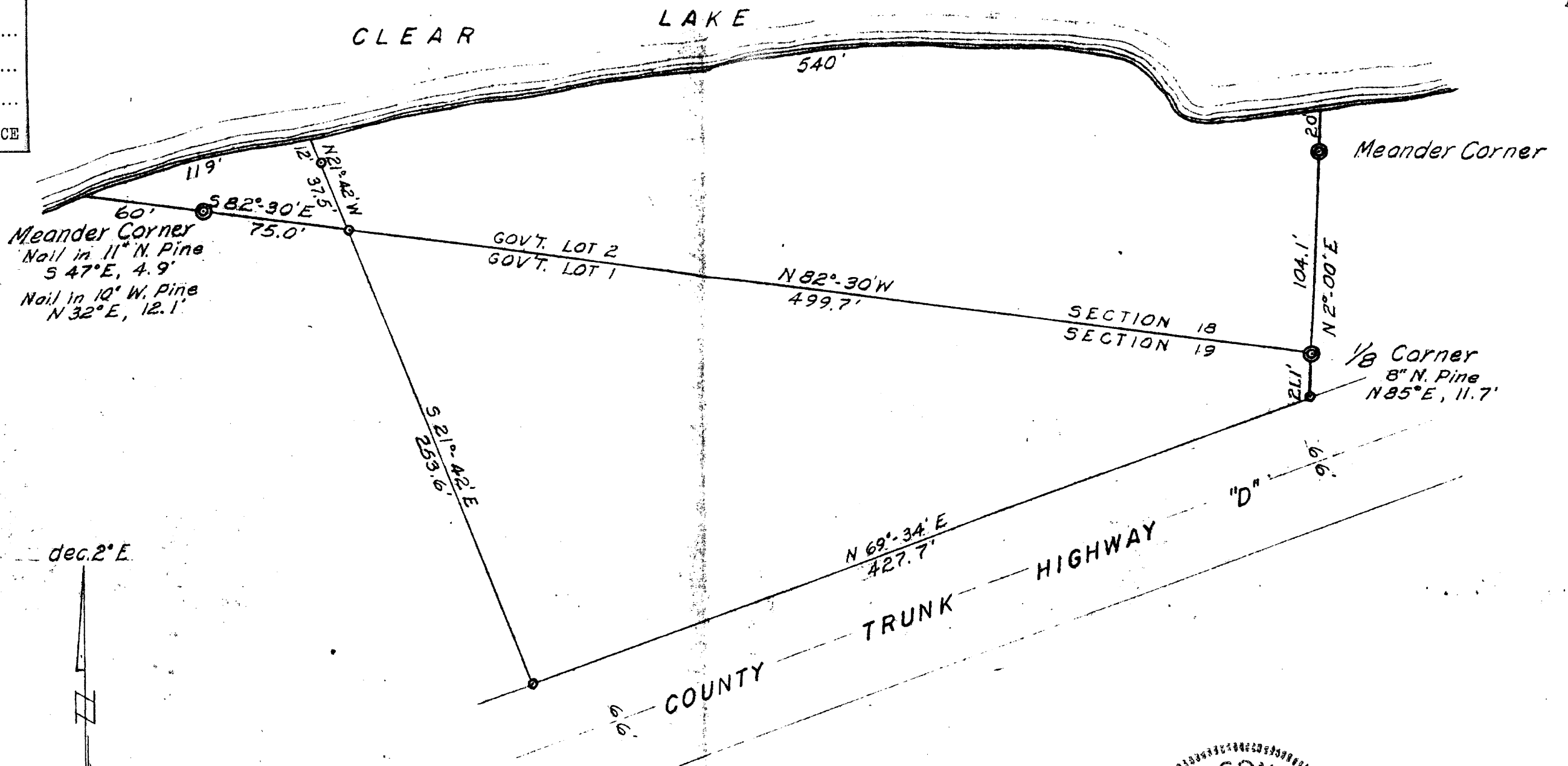
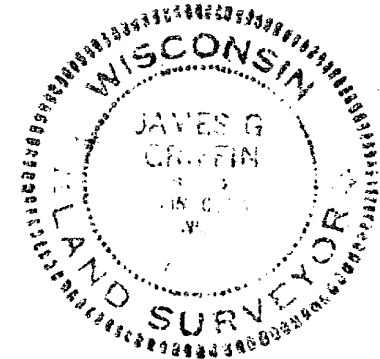


MAP # **A0768**  
 DATE FILED **AUG 02 1966**  
 BY *J.B.*  
 DESCRIPTION FILED  
 ONEIDA CO. SURVEYOR'S OFFICE

A0768



Part of  
 GOV'T. LOT 2, SECTION 18  
 and  
 GOV'T. LOT 1, SECTION 19  
 T 39 N, R 9 E  
 Oneida County, Wis.



Scale 1" = 60'

November, 1964

Northwoods Surveyors

*James G. Griffin*  
 Land Surveyor

A0768

A0768  
 J. Fisher