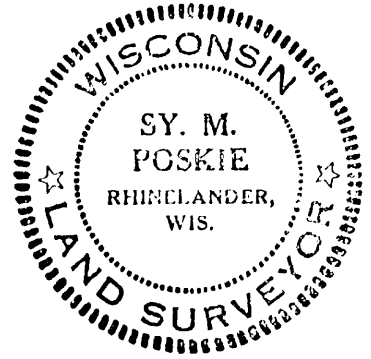
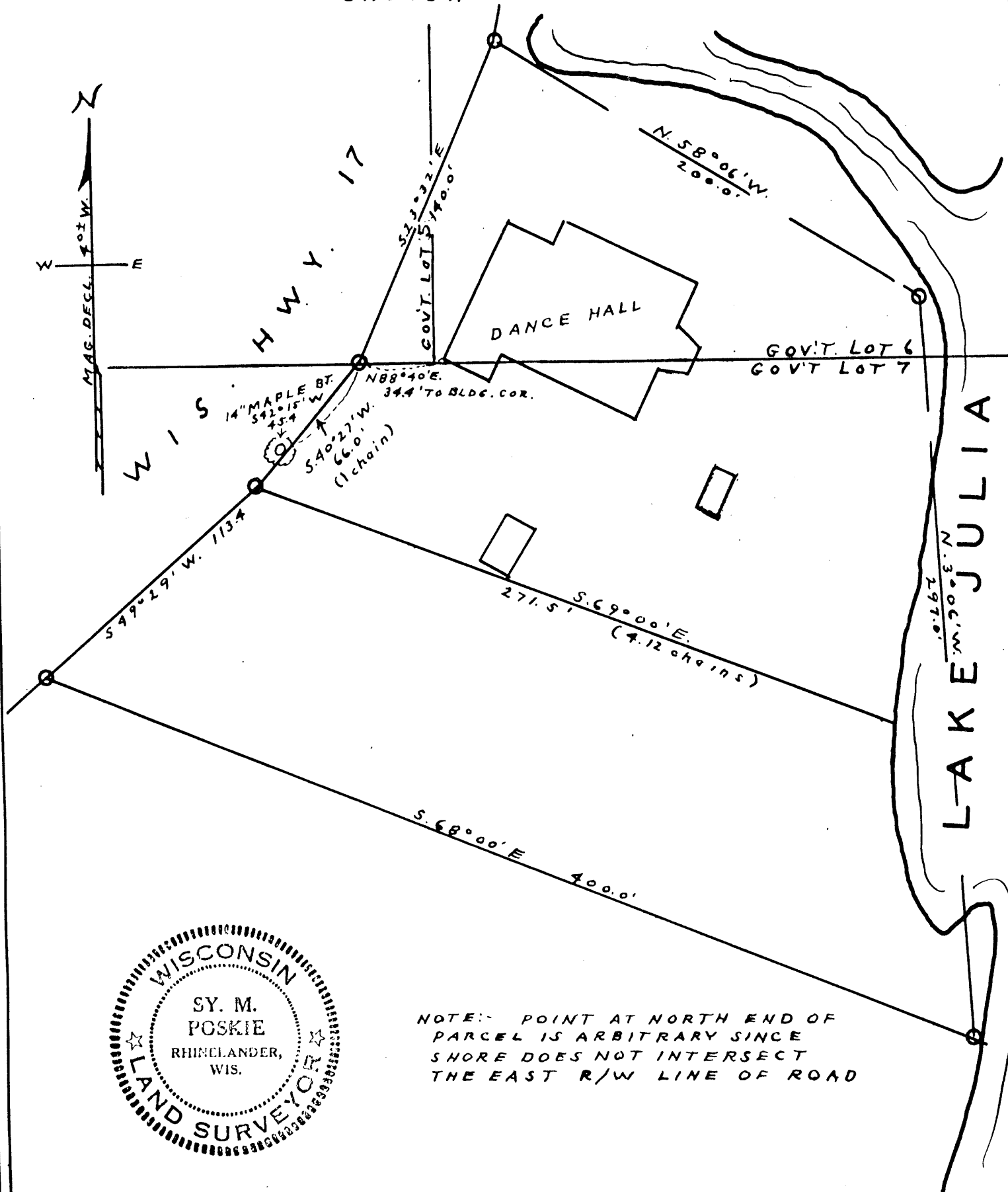


MAP # **A0772**
 DATE FILED **SEP 17 1996**
 BY *JB*
 DESCRIPTION FILED
 ONEIDA CO. SURVEYOR'S OFFICE

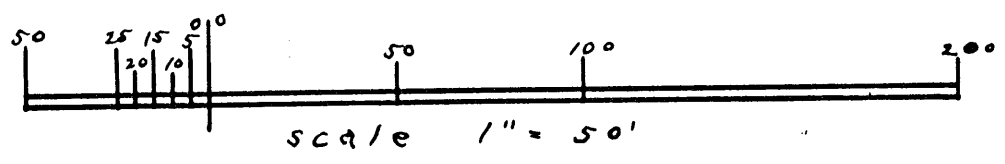
VOL 226 PAGE 488

SURVEY
 FOR
VINCENT R. DEANY

IN
 GOV'T LOTS 5, 6 & 7 ; SEC. 12 ; T36N, R8E.
 OF PARCELS DESCRIBED IN VOLUME 192 D. PAGE 579
 ONEIDA COUNTY RECORDS



NOTE: POINT AT NORTH END OF
 PARCEL IS ARBITRARY SINCE
 SHORE DOES NOT INTERSECT
 THE EAST R/W LINE OF ROAD



DATED 9-3-96
 by M. Poskie