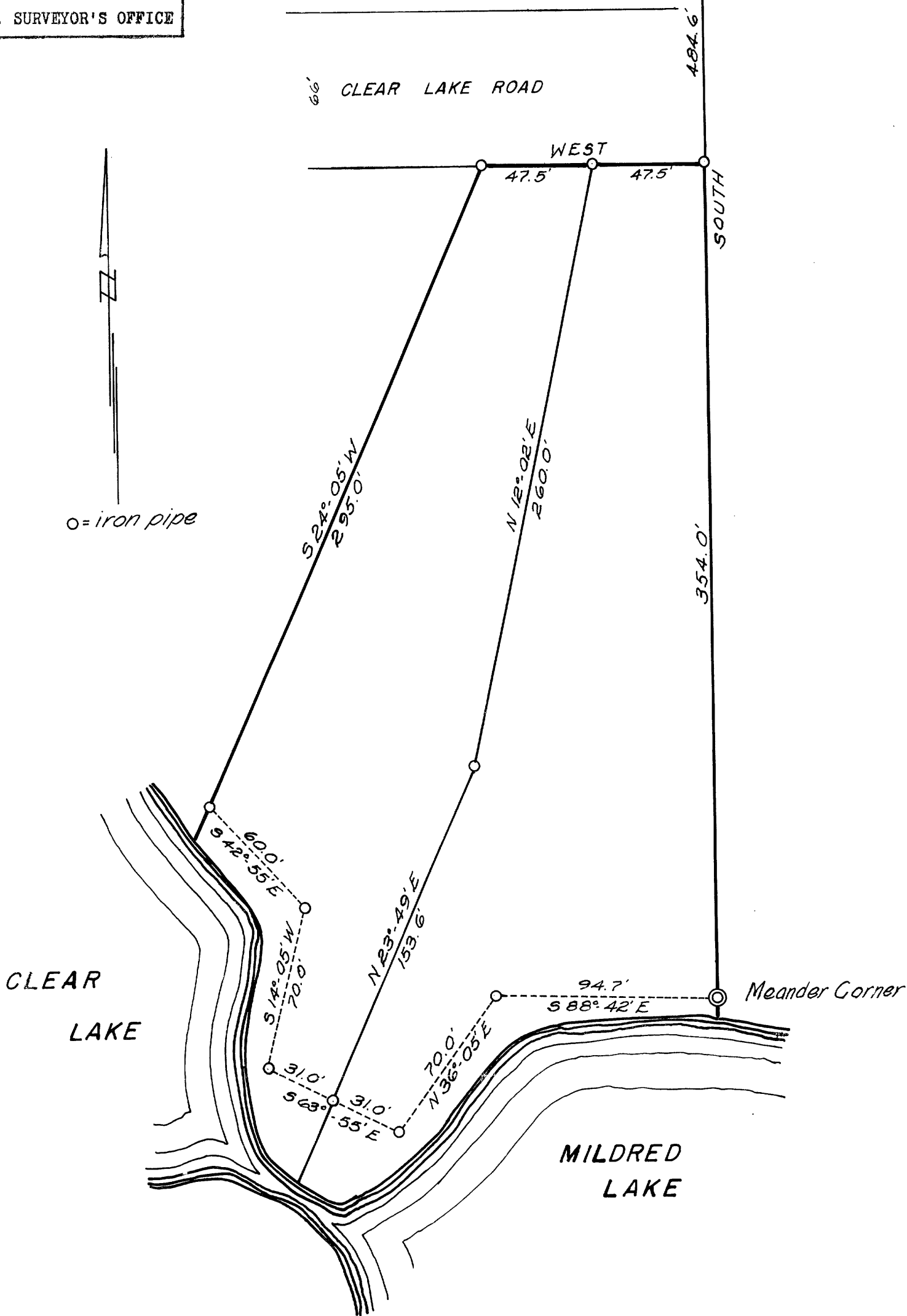
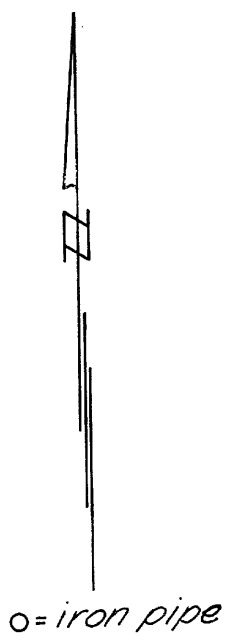


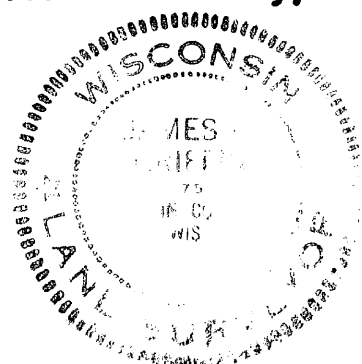
MAP # **A0777**  
 DATE FILED **OCT 02 1966**  
 BY *[Signature]*  
 DESCRIPTION FILED .....  
 ONEIDA CO. SURVEYOR'S OFFICE



Oneida County Brass cap  
 6" Oak  
 N 31° W, 16.0' **A0777**



Part of  
**GOV'T. LOT 4**  
**SECTION 24, T37N, R7E**  
 Oneida County, Wis.



Scale 1" = 50'  
 January, 1967

Northwoods Surveyors

*James D. Duff*  
 Land Surveyor

J. Fisher

A0777

A0777

9-24-377