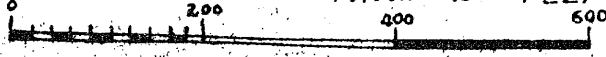


MAP OF THE VILLAGE OF WOODBORO ONEIDA COUNTY WIS.

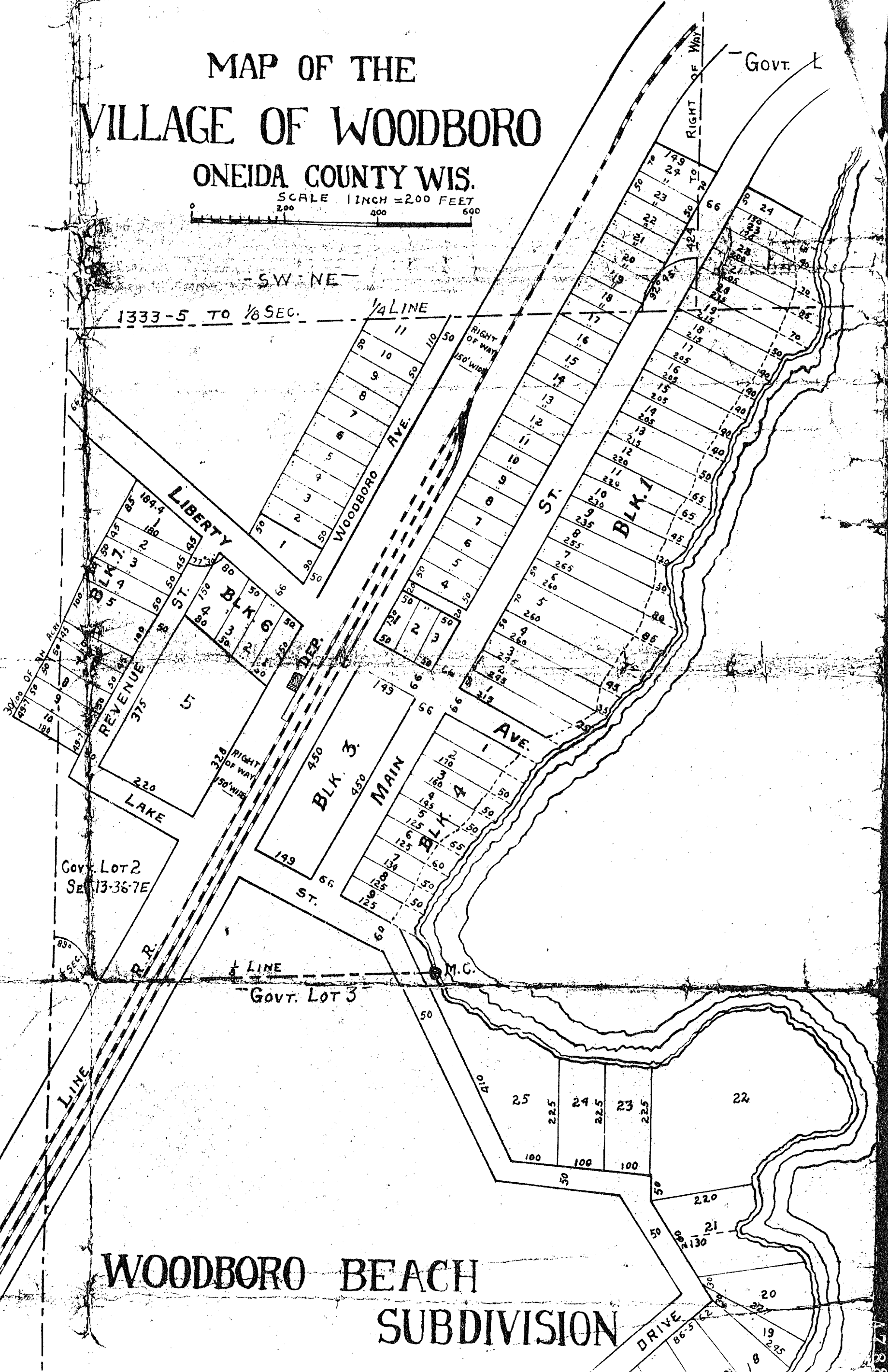
SCALE 1 INCH = 200 FEET



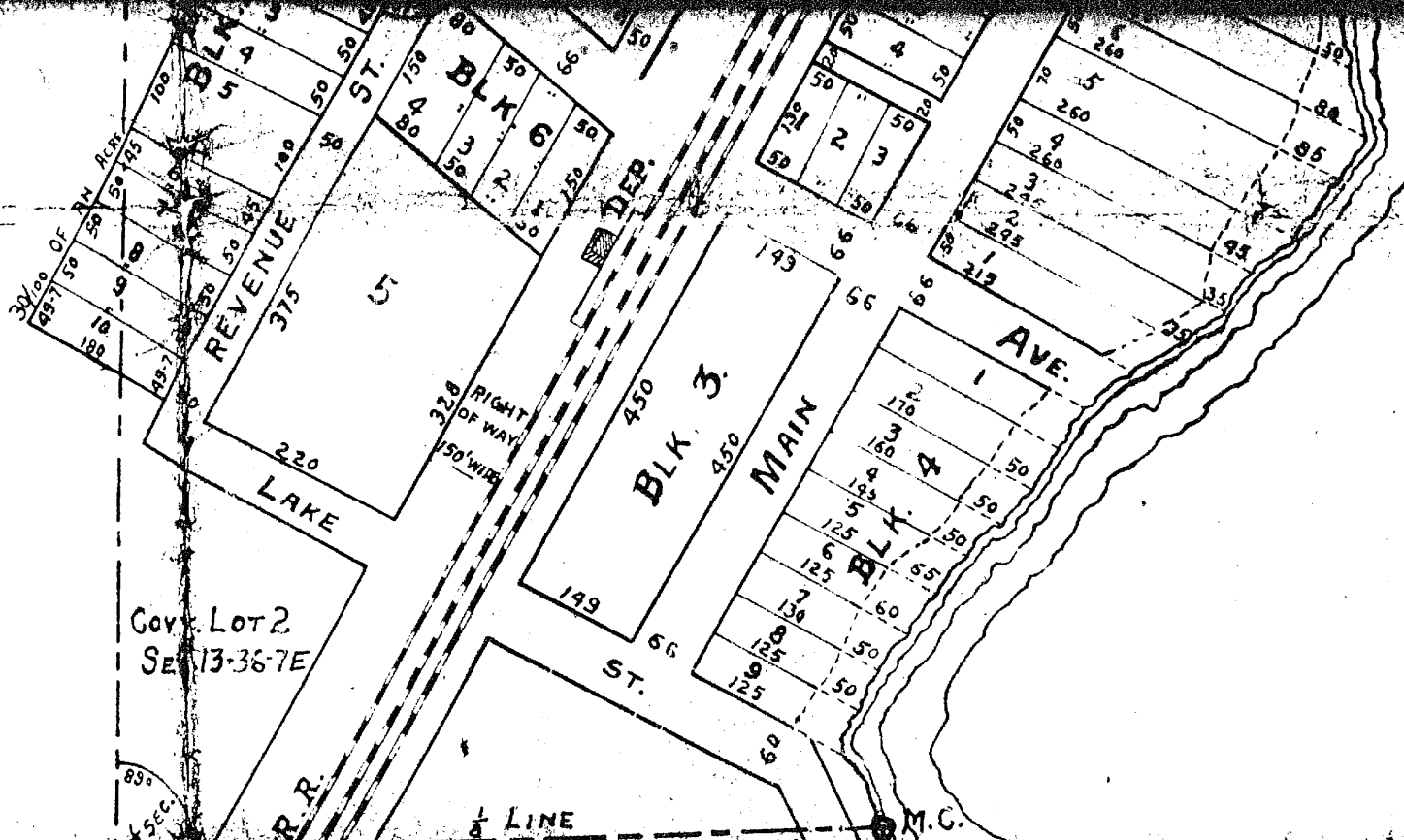
- SW - NE -

1333-5 TO 1/8 SEC.

1/4 LINE



WOODBORO BEACH SUBDIVISION



Govt. Lot 2
SE 13-36-7E

Govt. Lot 3

WOODBORO BEACH SUBDIVISION

A. 27. 18

LOT 3-SEC. 13

