

MAP # A0789
 DATE FILED JAN 27 1997
 BY *JB*
 DESCRIPTION FILED
 ONEIDA CO. SURVEYOR'S OFFICE

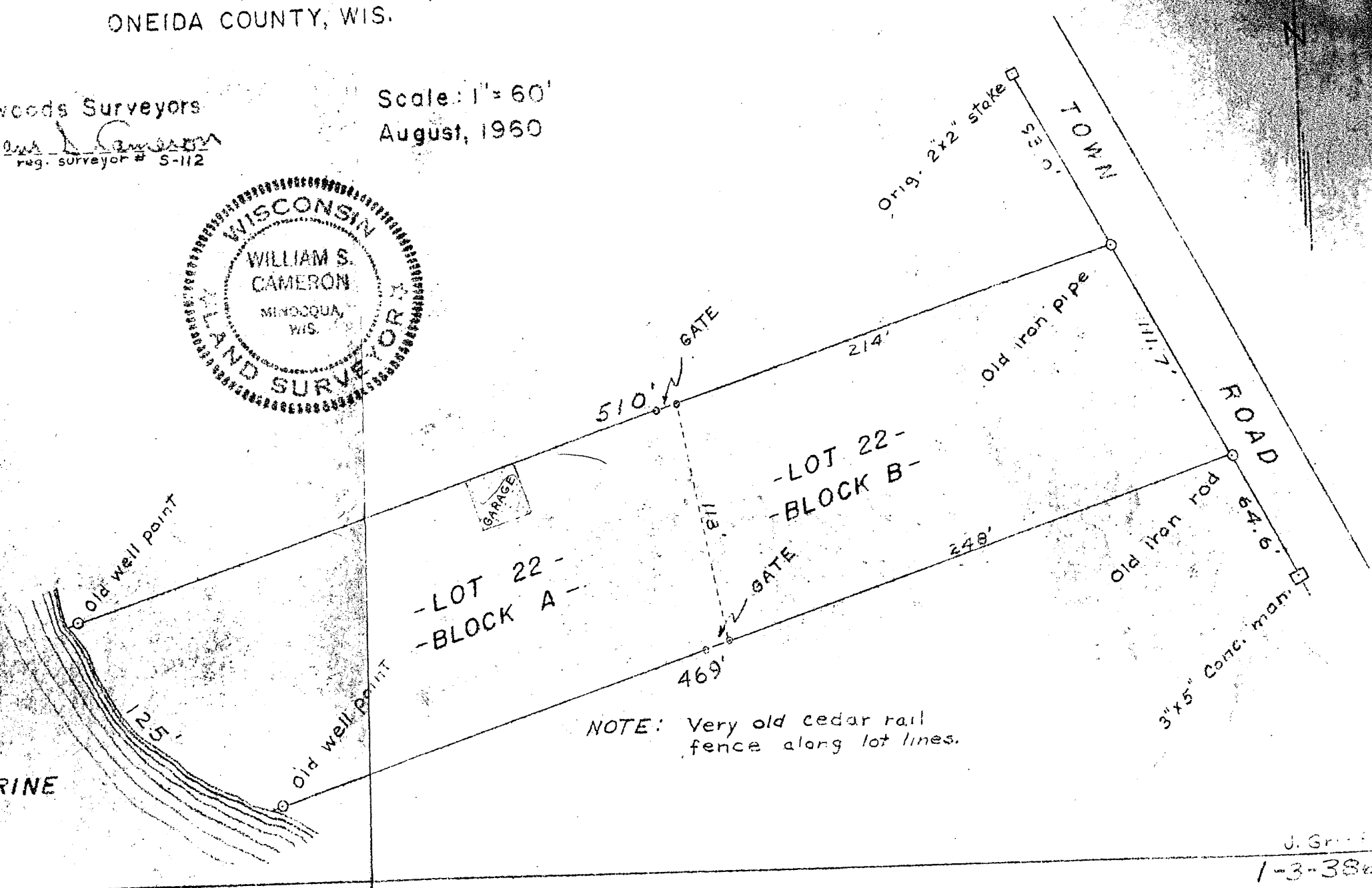
PART OF
 SYLVAN SHORES PLAT
 SECTION 3, T38N, R6E
 ONEIDA COUNTY, WIS.

Northwoods Surveyors
William S. Cameron
 reg. surveyor # S-112

Scale: 1" = 60'
 August, 1960



LAKE
 KATHARINE



NOTE: Very old cedar rail fence along lot lines.

J. Gr...
 1-3-38a