

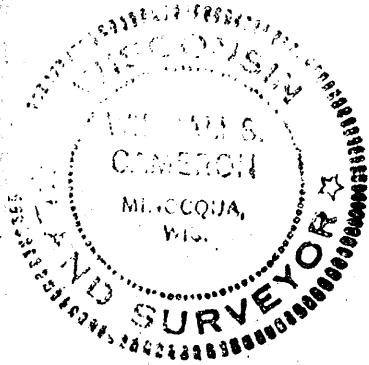
A0793

A0793

JAN 27 1997

JB

CHESBA CO. SURVEYOR'S OFFICE

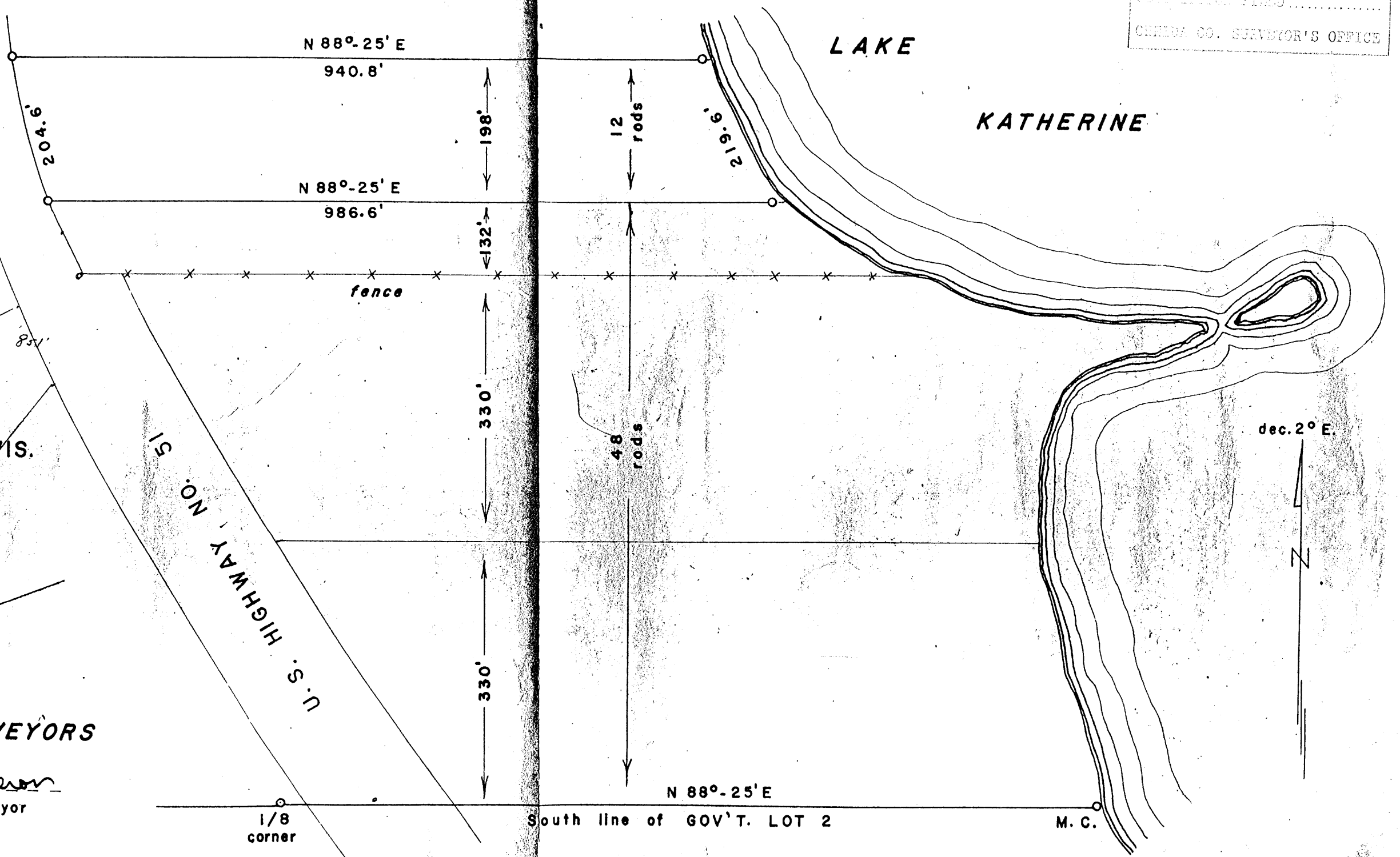


PART OF
SECTION 10
T 38 N, R 6 E
ONEIDA COUNTY, WIS.

Scale: 1" = 150'
November, 1958

NORTHWOODS SURVEYORS

William S. Cameron
reg. surveyor



A0793

A0793

J. GRIFFIN