

A0795

A0795

GOV'T. LOT 3
 SEC. 19, T38N, R6E
 Oneida County, Wis.

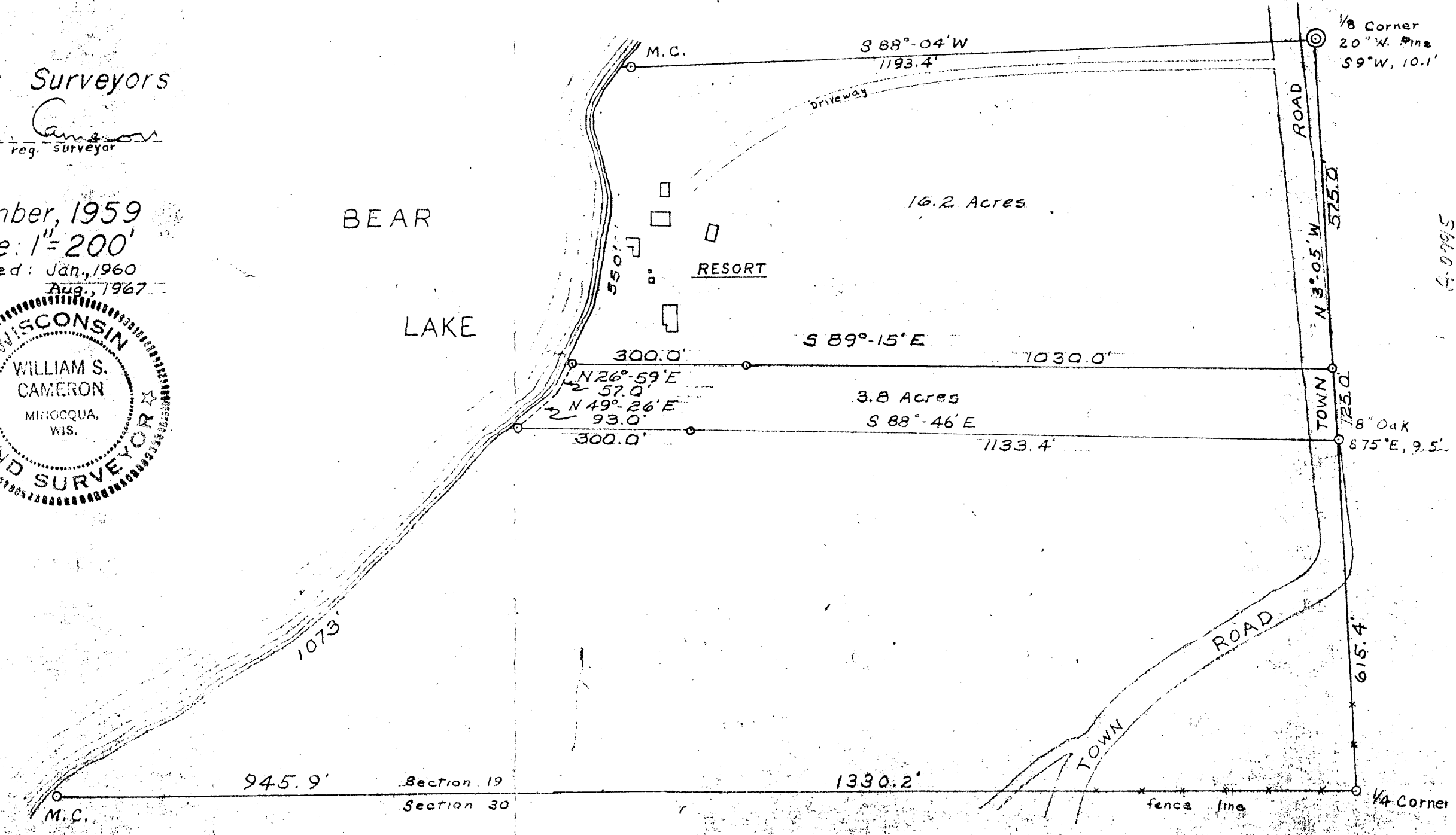
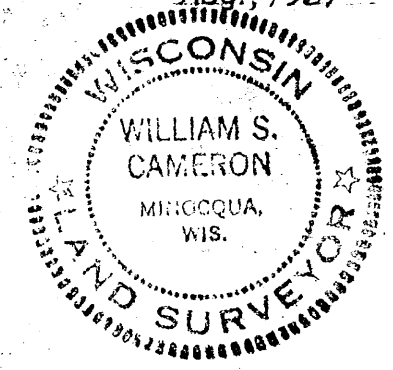
Note:
 Iron pipe at
 all corners.

MAP # A0795
 DATE FILED Jan 27, 1997
 BY JB
 DESCRIPTION
 ONEIDA CO. SURVEYOR'S OFFICE

Vol. 309
 Pg. 392

Northwoods Surveyors
 William S. Cameron
 reg. surveyor

November, 1959
 Scale: 1" = 200'
 revised: Jan., 1960
 Aug., 1967



J. Griffin
 14-19-386

56 1/4

6.0995

A0795