

40797

Section Corner  
(in lake)

26  
35  
492.4'

Meander Corner  
28° W. Pine  
N2° W, 40.1'

1/8 Corner  
10° W. Pine  
S30° W, 50.6'

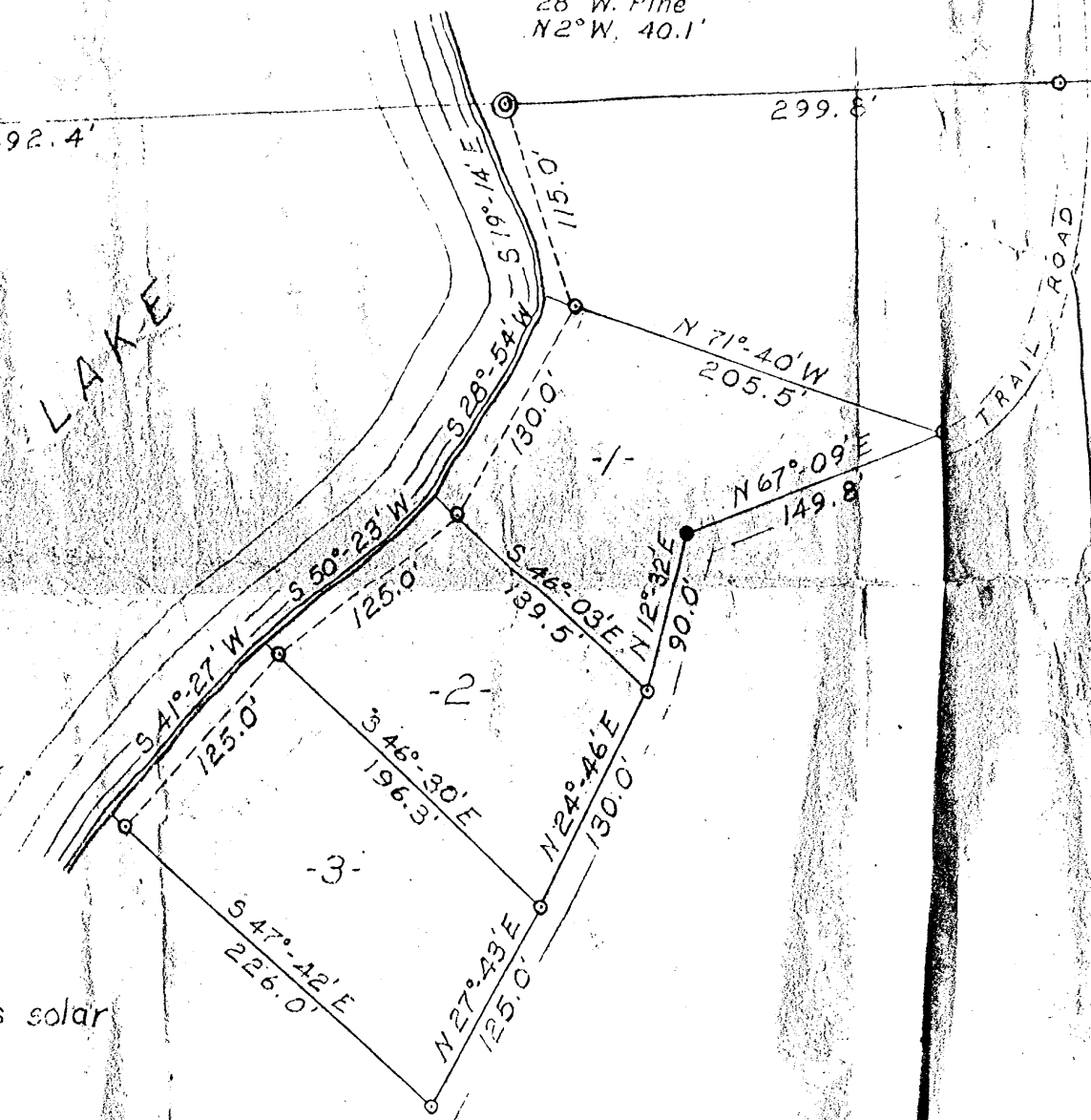
S 87°-23' W  
500.3'

S 87°-23' W  
1292.5'



7" Tamarack  
S 52° W, 12.1'  
3" Spruce  
S 86° E, 15.1'

LOST LAKE



TRAIL ROAD

Part of  
GOV'T. LOT 1  
SECTION 35  
T 38 N, R 6 E  
Oneida County, Wis.

bearings solar



o - iron pipe

Scale 1" = 100'

September, 1963



Northwoods Surveyors

*James G. Green*  
LAND SURVEYOR

JAN 27 1963

JB

DEPARTMENT OF REVENUE OFFICE

40797