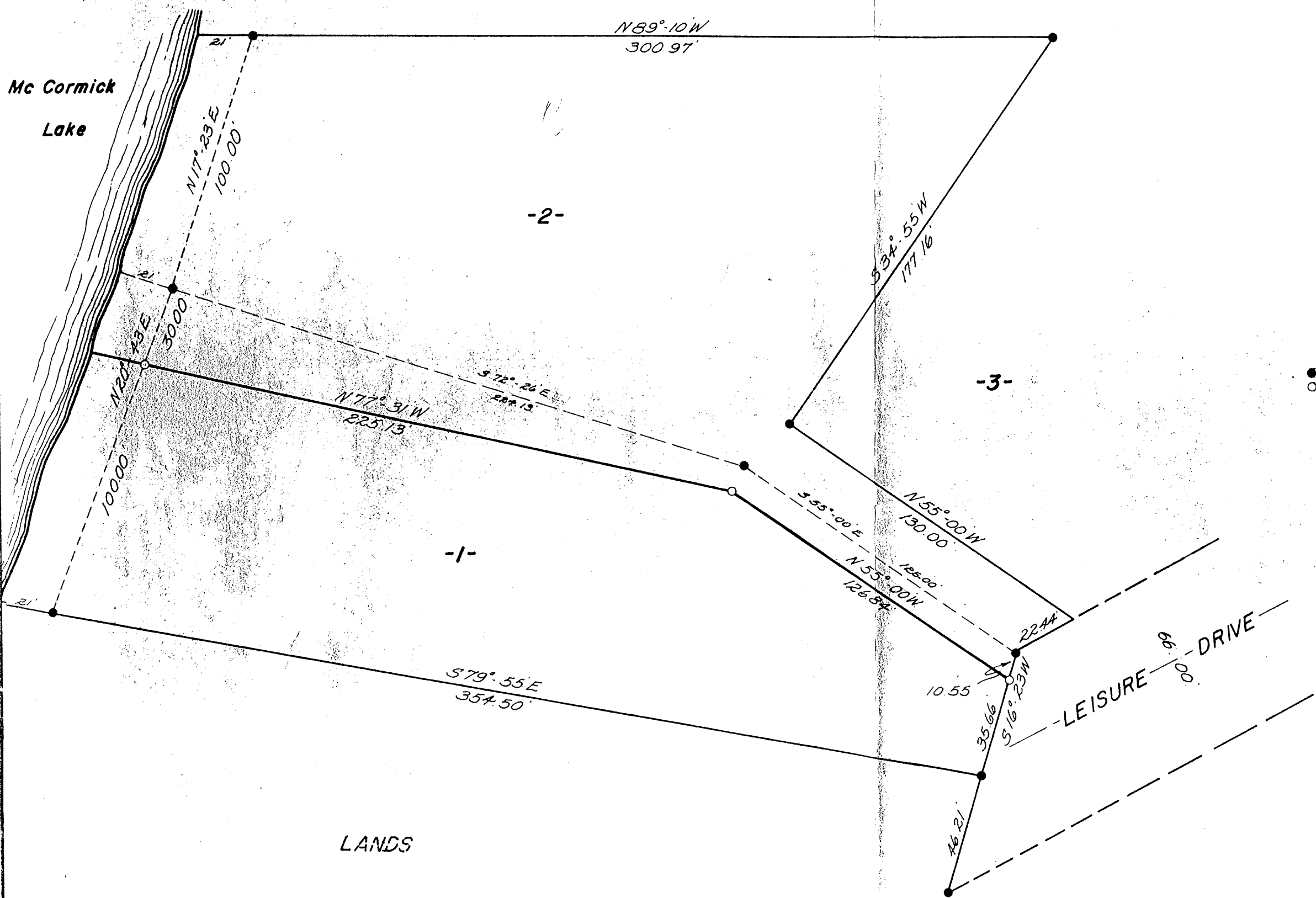


A0798

Bearings Magnetic

MAP # A0798
 DATE FILED JAN. 27, 1997
JB
 COUNTY CLERK FILED
 ONEIDA CO. SURVEYOR'S OFFICE

Mc Cormick Lake



● = Iron pipe found in place
 ○ = Iron pipe set

LOTS 1&2
 PLAT of LEISURE SHORES
 GOV'T. LOT 3
 SECTION 32, T38N, R6E
 Oneida County, Wis

Scale: 1" = 40'
 March, 1969

Northwoods Surveyors, Inc.
John H. Lieder
 Land Surveyor

A0798

W. H. Taylor