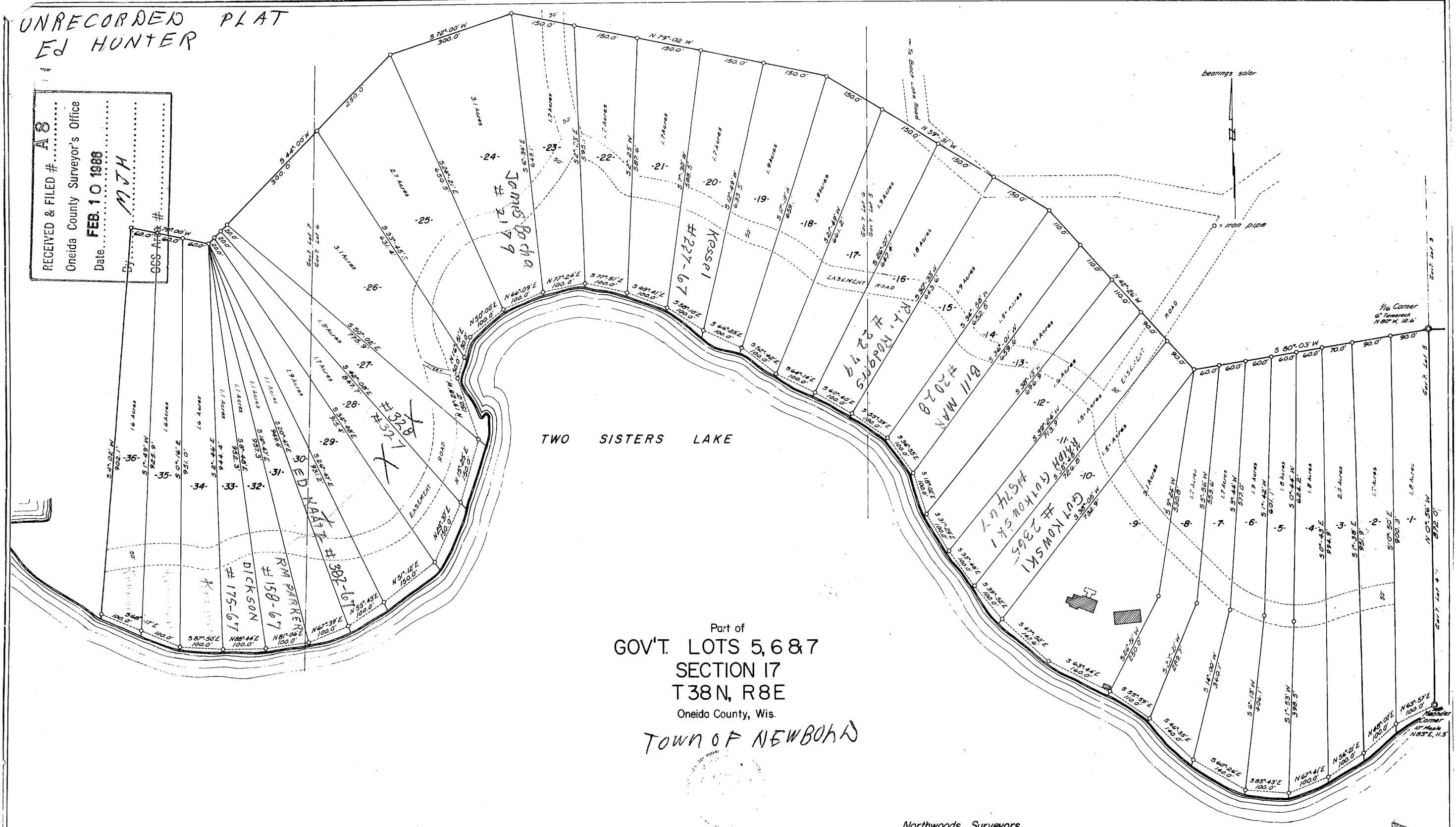


UNRECORDED PLAT
ED HUNTER

RECEIVED & FILED # **A8**
Oneida County Surveyor's Office
Date: **FEB. 10 1966**
By: **MTH**
GCS A #



Part of
GOV'T. LOTS 5, 6 & 7
SECTION 17
T38N, R8E
Oneida County, Wis.
TOWN OF NEWBOHN



Northwoods Surveyors

Lana S. Weaver

April, 1966

A8

J. Fisher