

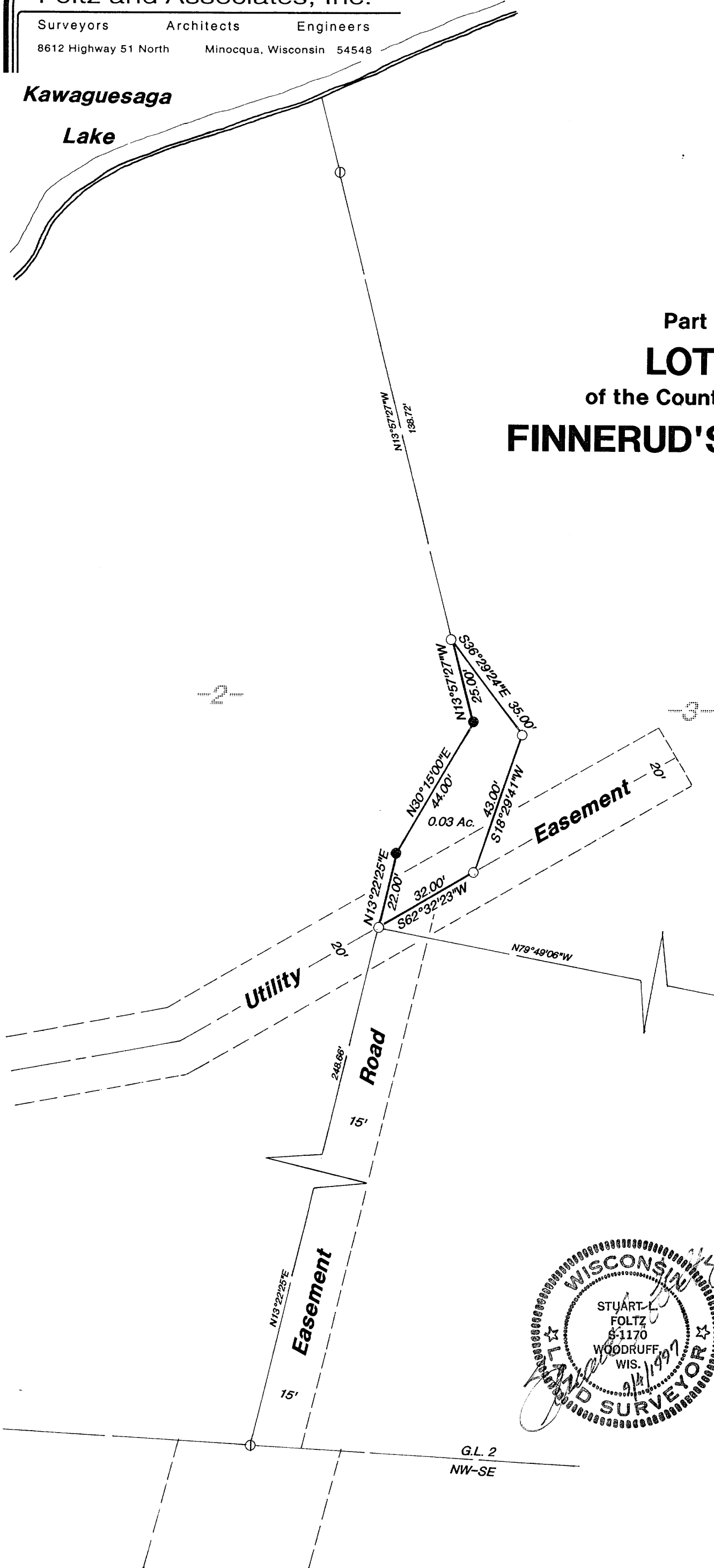
Foltz and Associates, Inc.

Surveyors Architects Engineers  
8612 Highway 51 North Minocqua, Wisconsin 54548

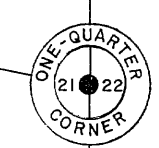
Kawaguesaga  
Lake

Gov't. Lot 2  
Section 21  
Township 39 North  
Range 6 East  
County Oneida  
State of Wisconsin

Part of  
**LOT 3**  
of the County Plat of  
**FINNERUD'S WOODS**

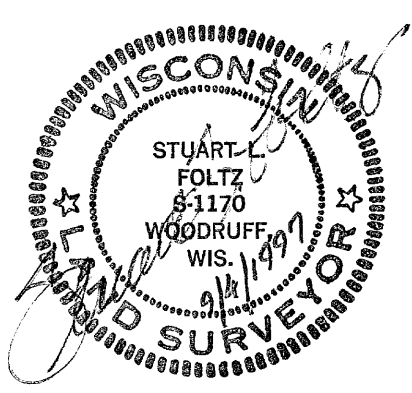


Bearings  
Solar



Oneida County alum.  
monument found

Scale:  
1" = 30'



- = 1" iron pipe found
- ⊙ = 1" iron pipe prev. set by Inman, Foltz and Associates, Inc.,
- = 1" iron pipe set

MAP #	A0811
DATE FILED	NOV 03 1997
BY	<i>JB</i>
DESCRIPTION FILED	.....
ONEIDA CO. SURVEYOR'S OFFICE	

G.L. 2  
NW-SE