

A0818

MAP #
 DATE FILED **JAN 15 1968**
 BY
 DESCRIPTION FILED
 ONEIDA CO. SURVEYOR'S OFFICE

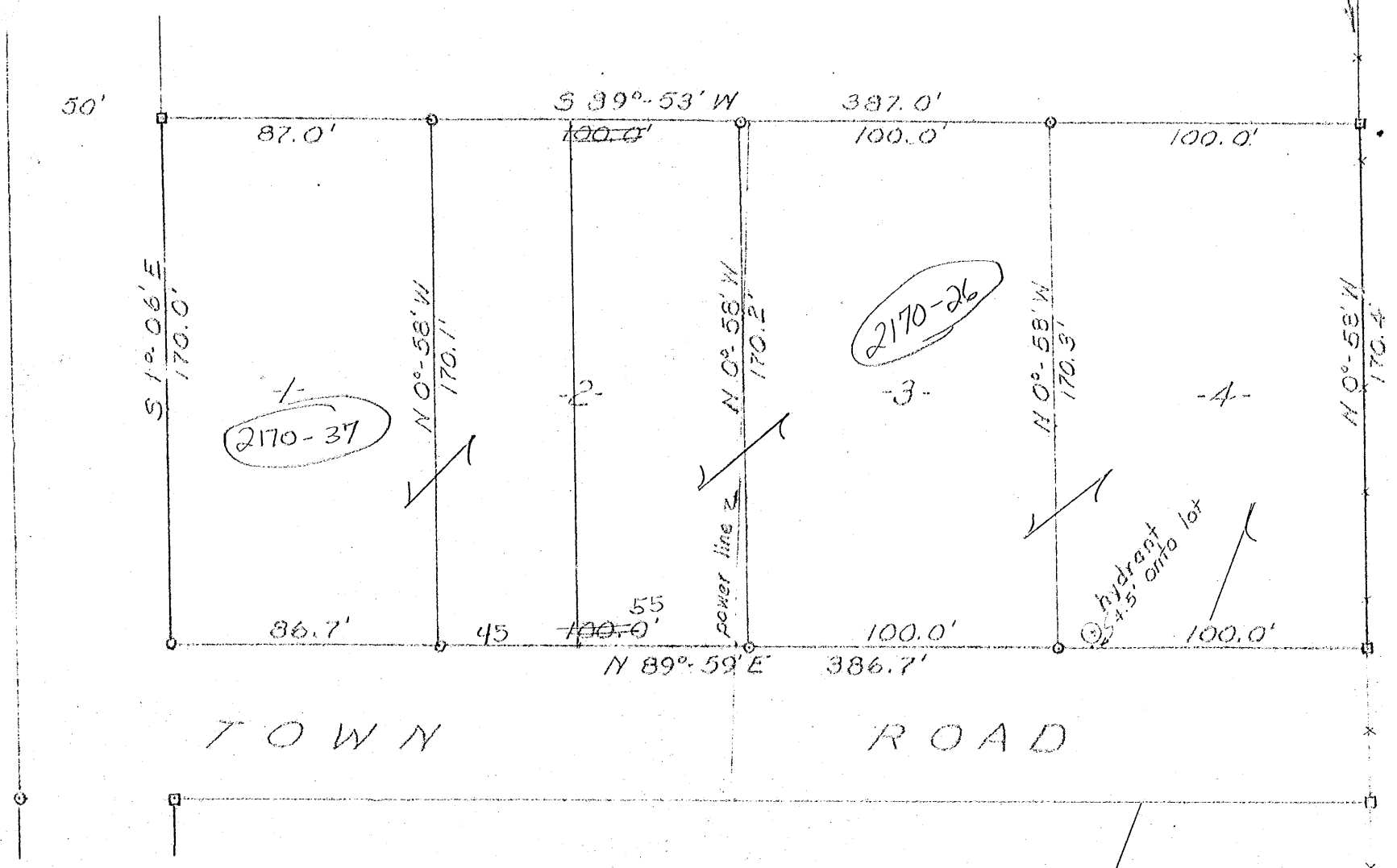
dec. 2° E



□ = concrete monument
 ○ = iron pipe

1/8 Corner
 16" Oak
 N 3° E, 44.1'

A0818



Part of
 NW 1/4 of the NE 1/4
 SECTION II
 T 39N, R 6E
 Oneida County, Wis.

Scale 1" = 50'
 June, 1964



Northwoods Surveyors
 James G. Griffin
 Land Surveyor

A0818