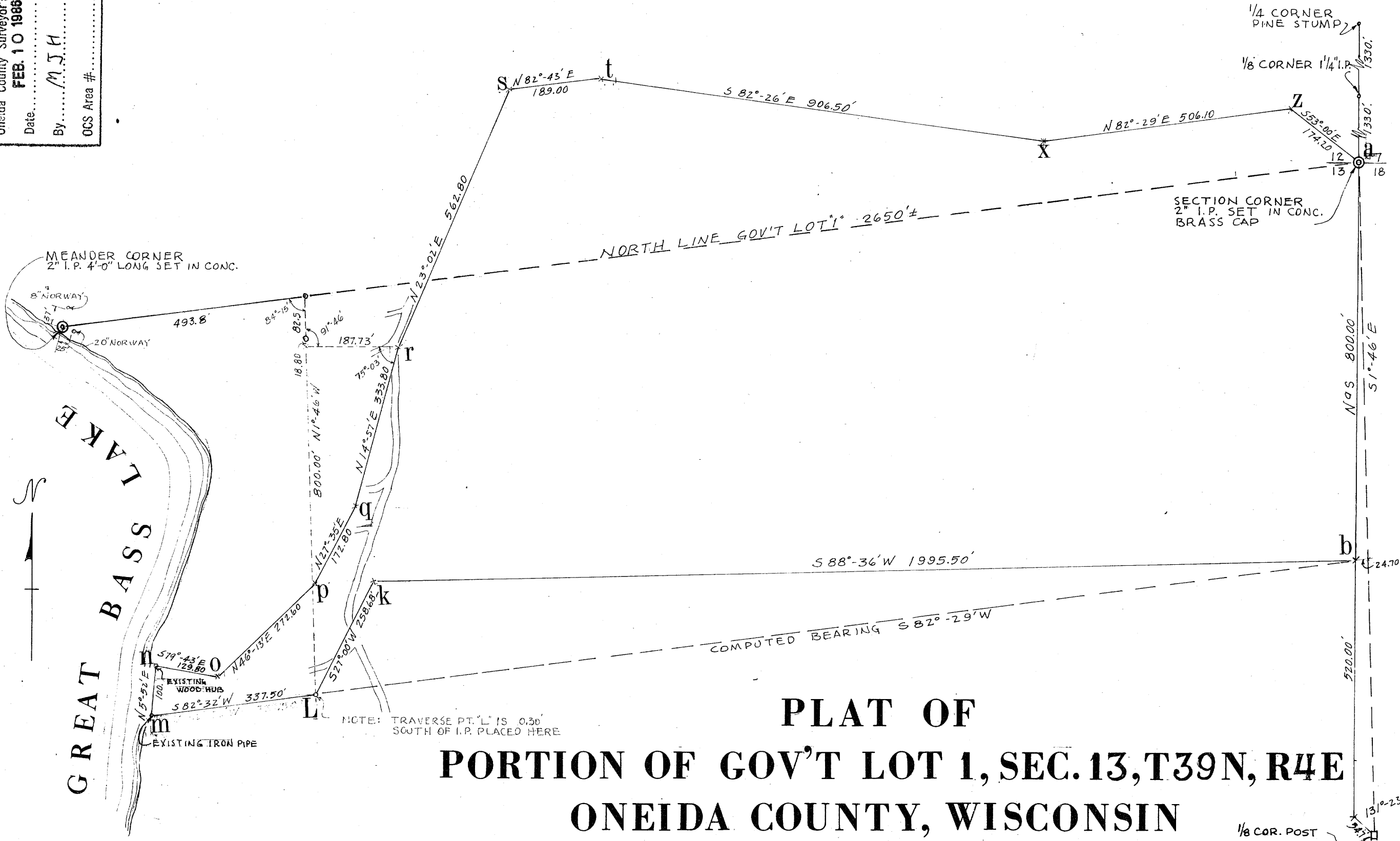
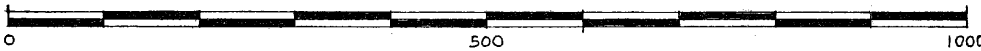


RECEIVED & FILED # **A 82**
 Oneida County Surveyor's Office
 Date: **FEB. 10 1986**
 BY: **M. J. H.**
 OCS Area #



PLAT OF
PORTION OF GOV'T LOT 1, SEC. 13, T39N, R4E
ONEIDA COUNTY, WISCONSIN



HERBERT MOORE
 County Surveyor

A 82