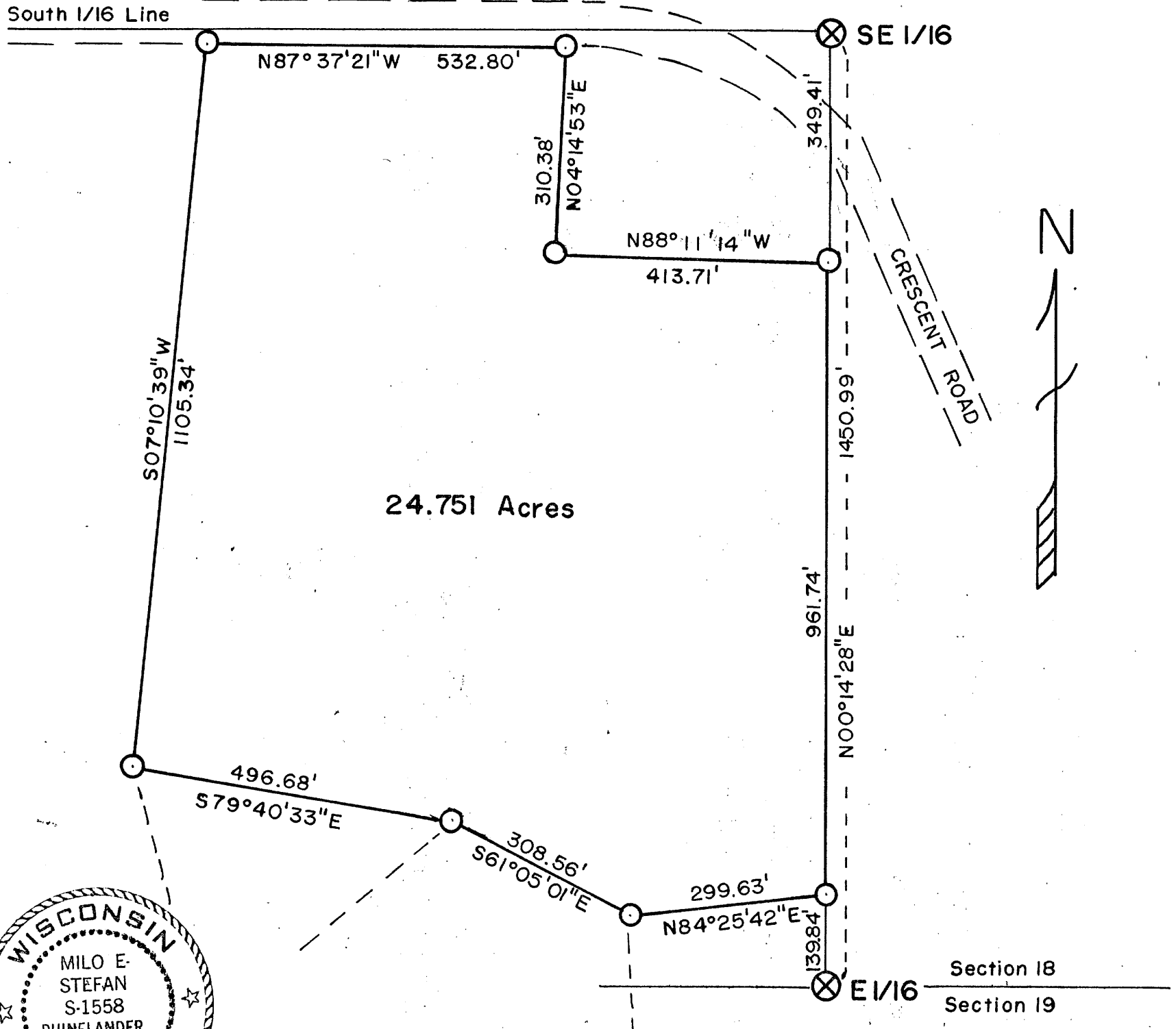


SURVEY FOR DELTA OLSON

Being Part of Government Lot 3, Section 18, T.36N., R.8E. Oneida County, Wisconsin

MAP #	A0826
DATE FILED	FEB 06 1998
DESCRIPTION FILED	
ONEIDA CO. SURVEYOR'S OFFICE	



Surveyors Affidavit:
 I, Milo E. Stefan, R.L.S. #1558, a licensed land surveyor in the State of Wisconsin, and at the request of Delta Olson, have surveyed and marked the boundaries of these lands as so indicated on this Plat Map. That to the best of my abilities this Plat Map is a true and correct representation of the lands surveyed.

Milo E. Stefan
 Milo E. Stefan
 R.L.S. #1558

6/25/1992
 Date

LEGEND

- - Iron Pipes, Lot Corners
- ⊗ - Section Subdivision Corners
- - - - - Lot Lines
- — — — — Roadways

SCALE: 1" = 200'
 Bearings from Genisot Survey Along East 1/16 Line to Section 18.

STEFAN SURVEYORS

By: *MES* Date: *6/25/92*