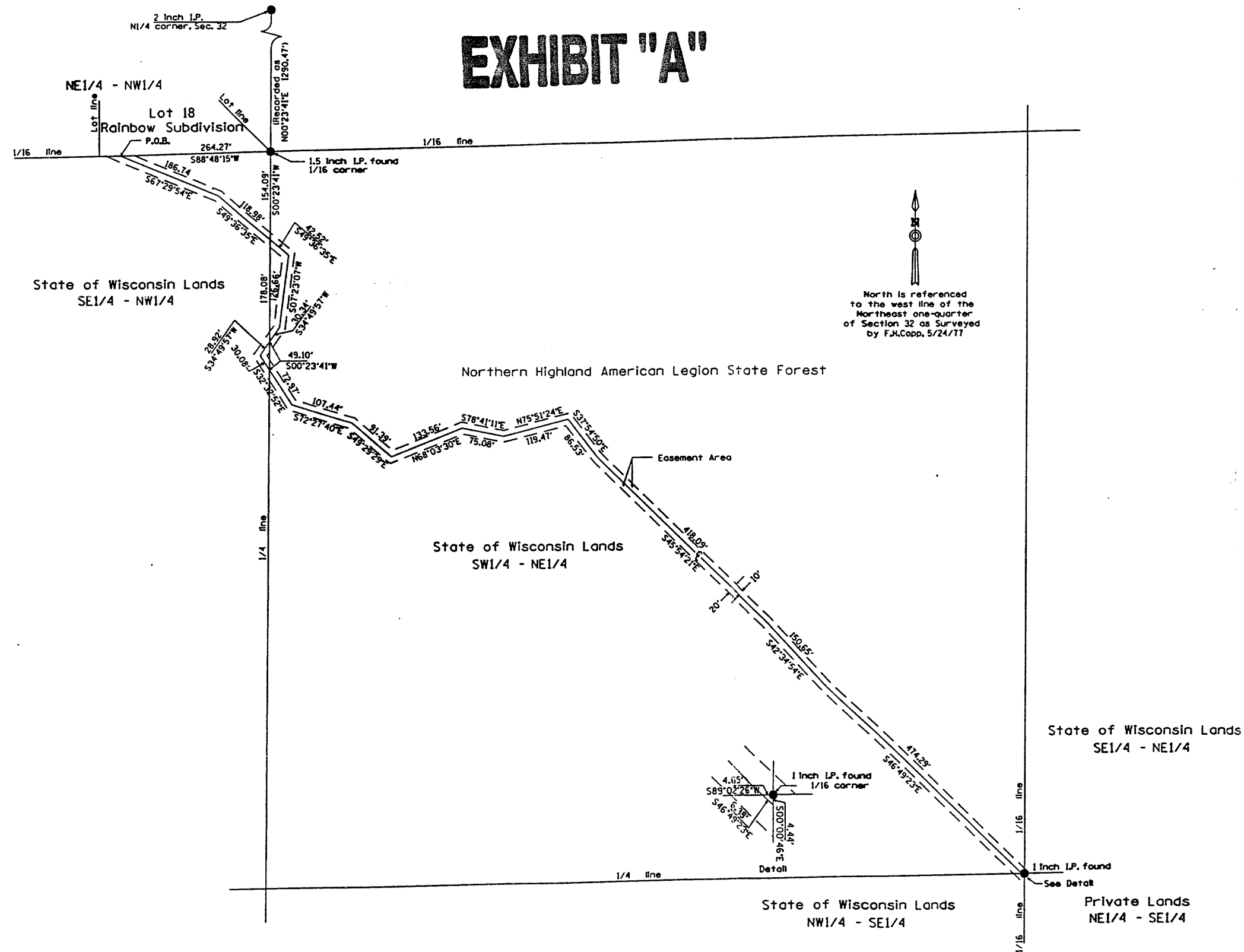


EXHIBIT "A"



MAP # A0842

DATE AUG 03 1998

BY *JB*

DESCRIPTION

ONEIDA CO. SURVEYOR'S OFFICE

CADD	WISCONSIN PUBLIC SERVICE CORPORATION	DATE: 5-13-98
DRAWN BY: trf	A 14.4 KV underground electric distribution easement across State of Wisconsin lands in Section 32, T39N-R8E, Town of Newbold, Oneida County, Wisconsin.	SCALE: 1" = 200'
CHECKED BY: trf		Exhibit "A"
APPD BY: trf		