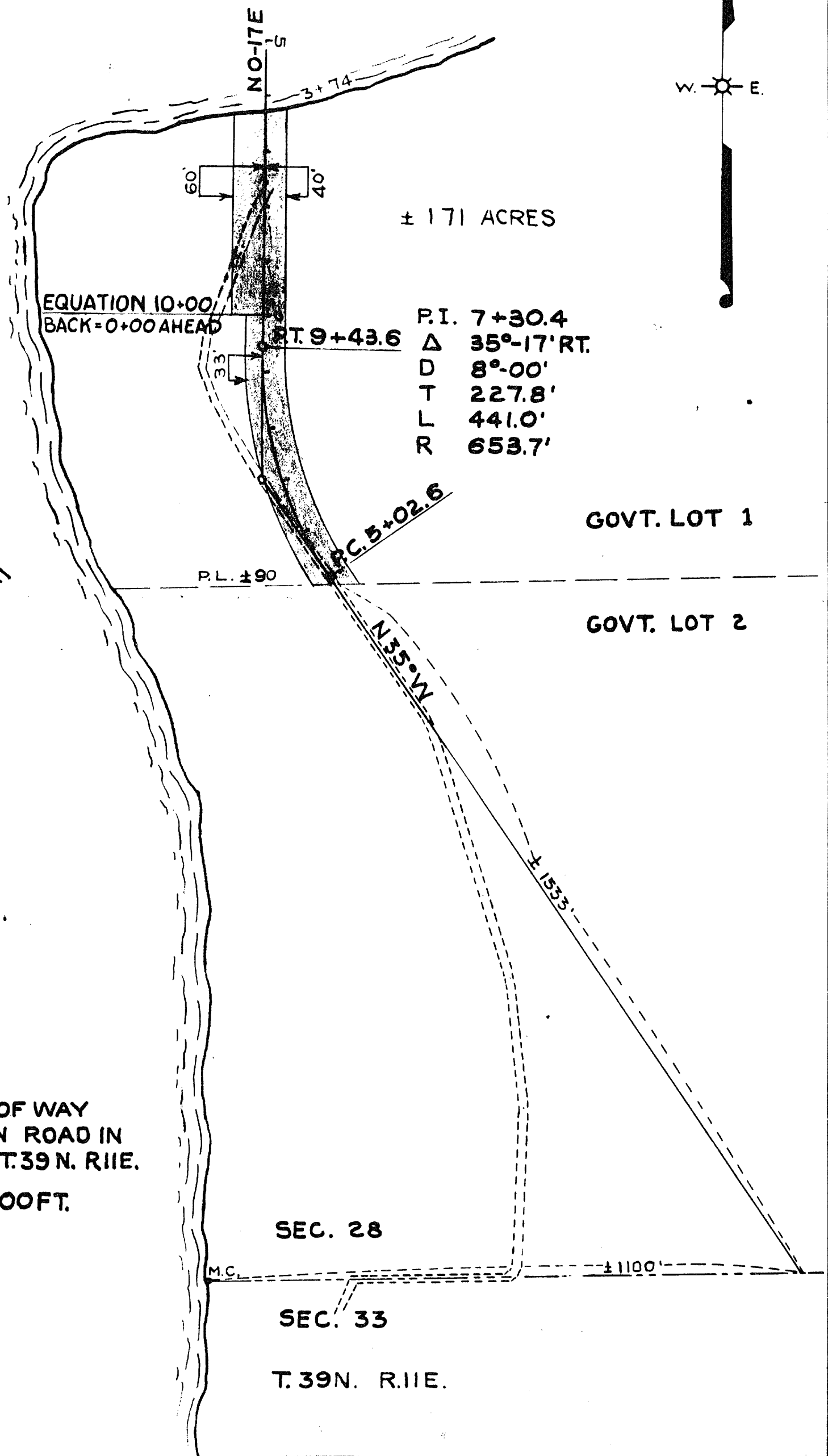
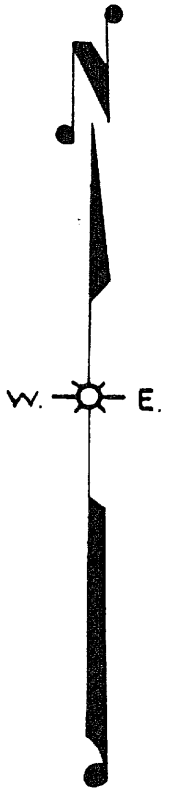


A0858



PLAT OF RIGHT OF WAY
 REQUIRED FOR TOWN ROAD IN
 GOVT. LOT 1 SEC. 28 T. 39 N. R. 11 E.
 SCALE 1 IN. = 200 FT.

MAP # A0858
 DATE FILED JAN 15 1999
 BY DAP
 DESCRIPTION FILED
 ONEIDA CO. SURVEYOR'S OFFICE

A0858