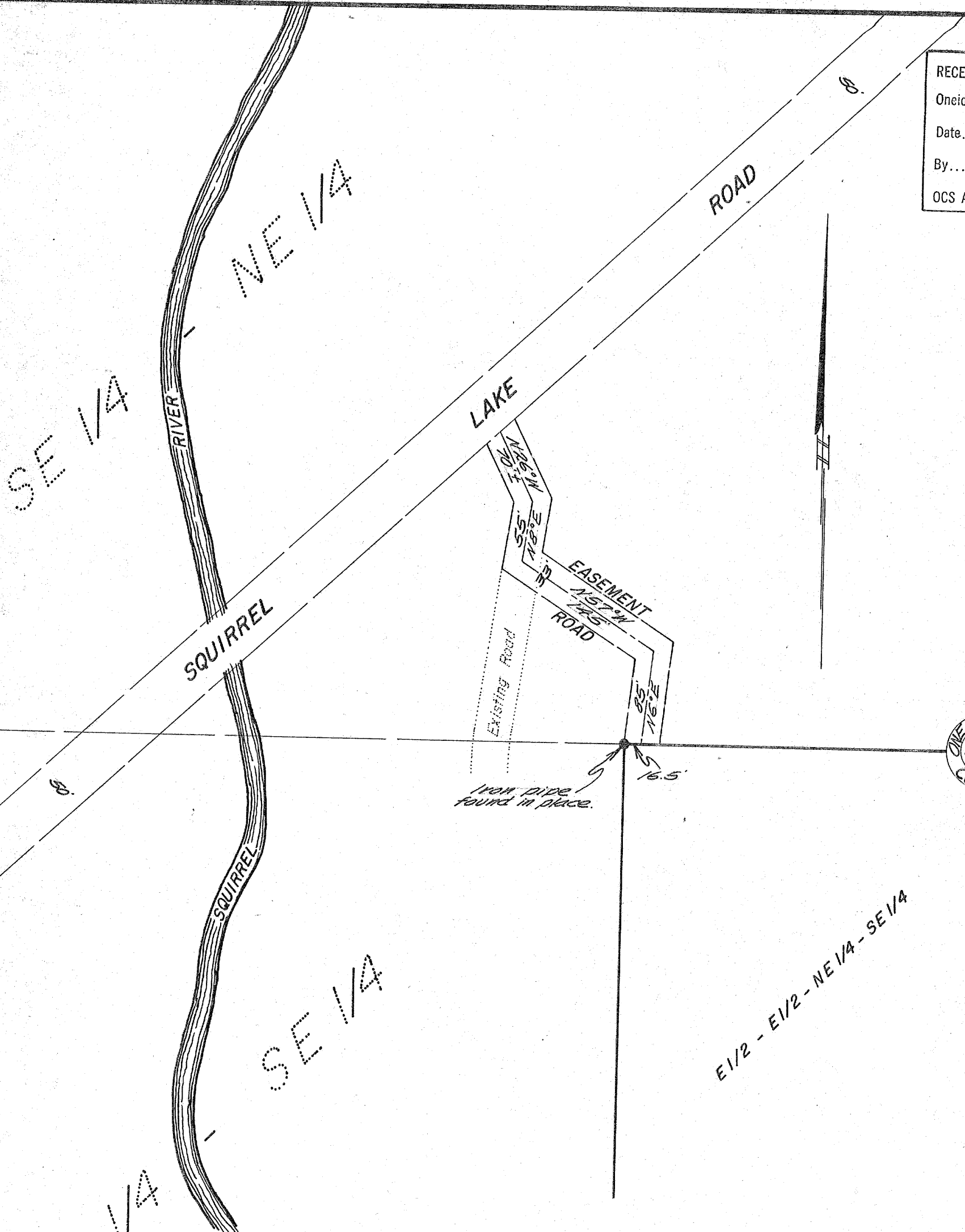


A 87

RECEIVED & FILED #. A.8....
 Oneida County Surveyor's Office
 Date. FEB. 10 1986
 By. MJH
 OCS Area #.....



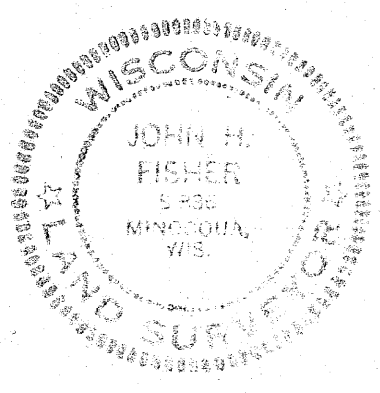
NE 1/4
 SE 1/4

E 1/2 - E 1/2 - NE 1/4 - SE 1/4

Part of
SECTION 30
T39N, R5E
 Minocqua Township
 Oneida County, Wis.

Scale 1" = 100'

December, 1973



~~John H. Fisher~~
 County Surveyor
 Oneida County, Wisconsin
 Courthouse
 Northwoods Rhinelander, Wisconsin 54501
 Surveyors Inc.

John H. Fisher
 Land Surveyor

APR. 14 1974