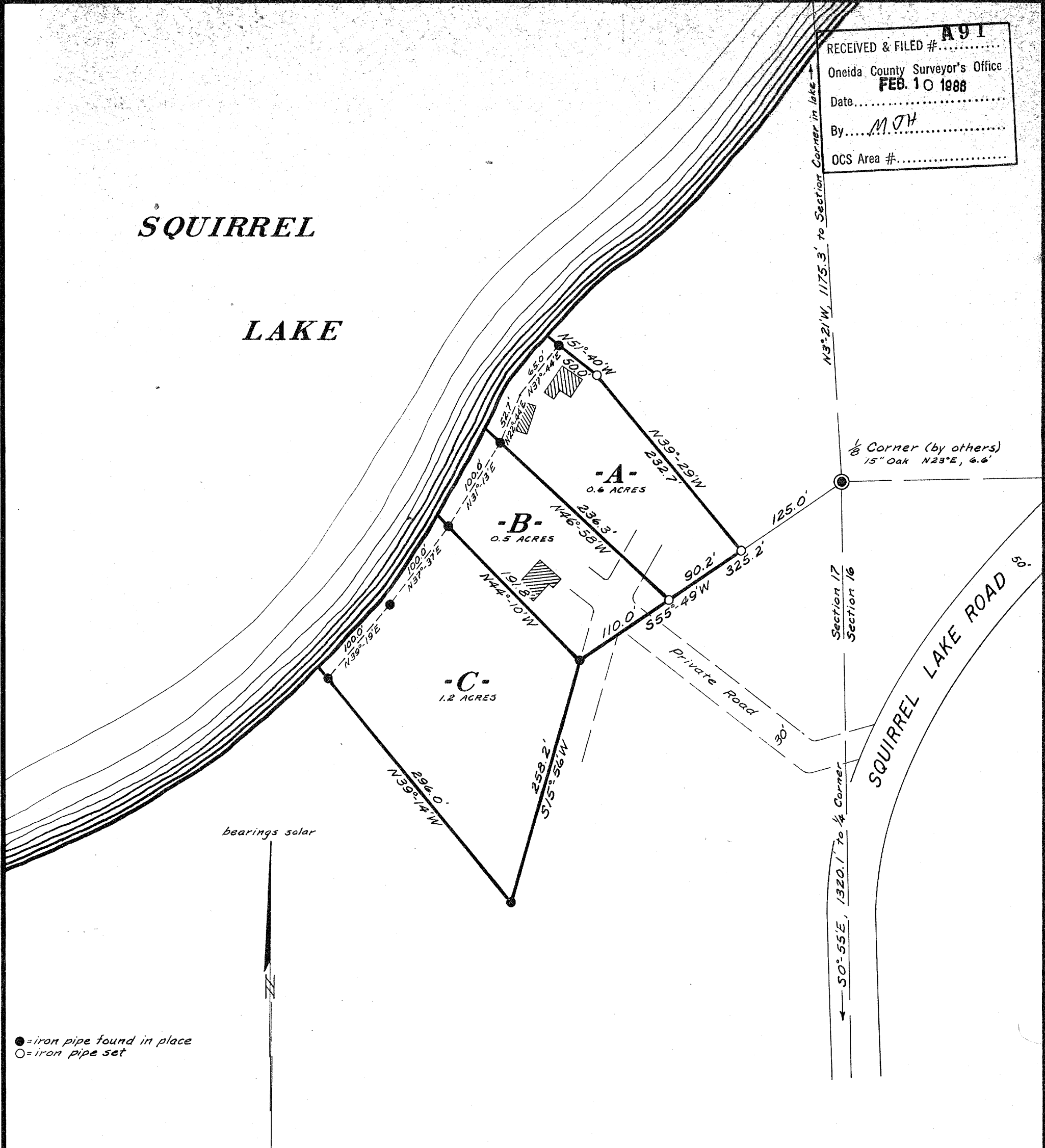


RECEIVED & FILED # **A91**
 Oneida County Surveyor's Office
FEB. 10 1988
 Date.....
 By *M JH*
 OCS Area #.....

SQUIRREL

LAKE



Part of
GOV'T. LOT 2
SECTION 17, T39N, R5E
 Oneida County, Wis.

HERBERT MOORE
 County Surveyor
 Oneida County, Wisconsin
 Court House
 Rhinelander, Wisconsin 54501
SEP. 15 1972
 296

Scale 1" = 100'

Northwoods Surveyors Inc.

16V

June, 1972

William J. Cameron
 Land Surveyor

8-17-395