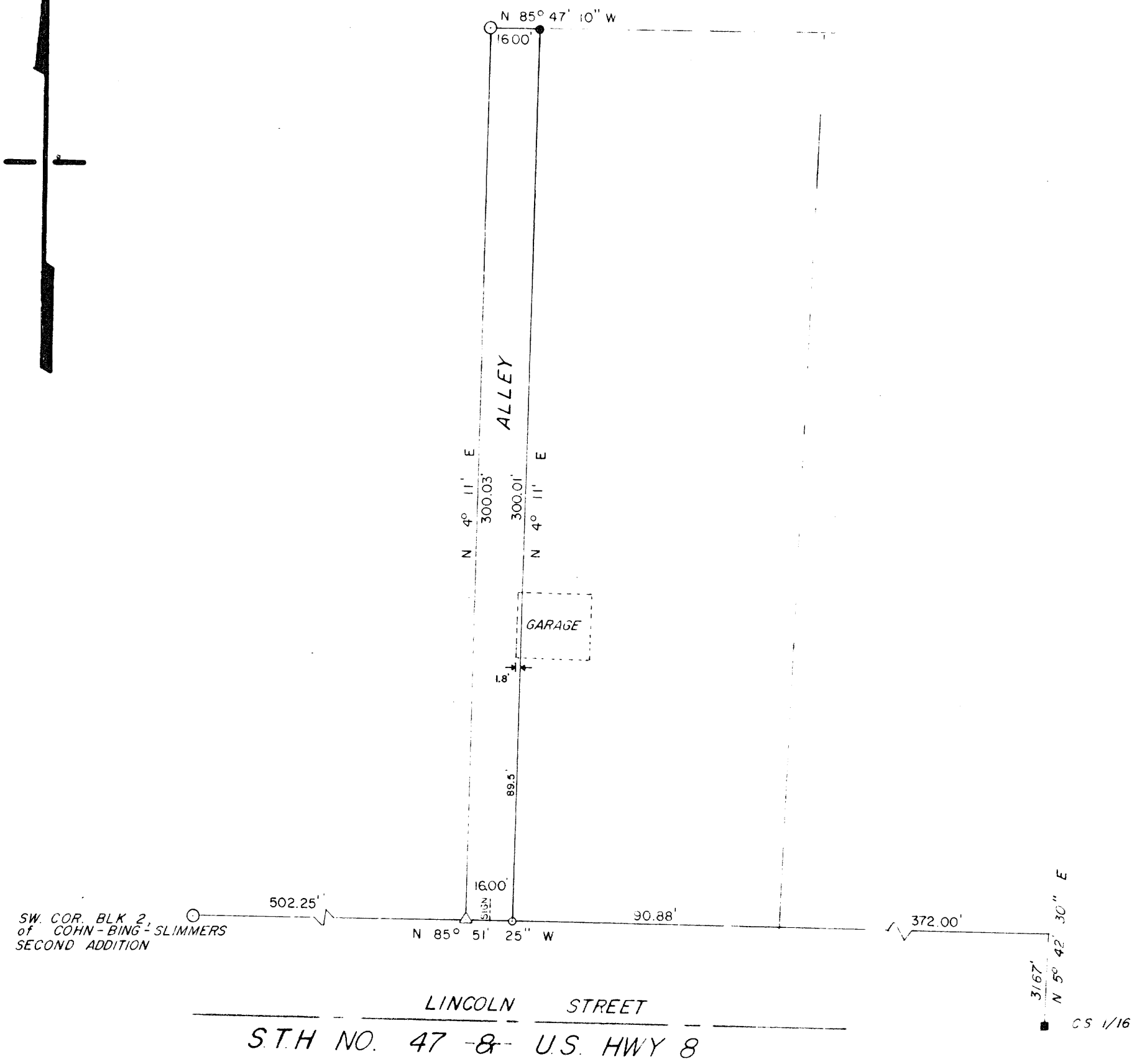


MAP # A0914
 DATE FILED OCT 08 1999
 BY SK
 DESCRIPTION FILED
 ONEIDA CO. SURVEYOR'S OFFICE

LOCATED IN THE
 NE 1/4 - SW 1/4,
 SEC. 5, T 36 N,
 R 9 E, CITY OF
 RHINELANDER

- FOUND IRON PIPE
- △ FOUND PK NAIL
- SET RR SPIKE
- SET 1" X 30" IRON PIPE
- FOUND CAPPED MONUMENT



TELE - TECH-TV & APPLIANCE		
821 LINCOLN RHINELANDER, WIS		
SCALE: 1" = 40'	APPROVED BY:	DRAWN BY M.J.R.
DATE: 7-30-80		REVISED